

INSTALLATION INSTRUCTION

MANUAL AND MOTORIZED DUAL WINDSHIELD ROLLER BLIND

DRS-505 / DRS-555

VERY IMPORTANT !!! PLEASE READ CAREFULLY PRIOR TO INSTALLATION

INSPECTION OF BLIND ASSEMBLY PRIOR TO INSTALLATION

Prior to installation, it is very important to inspect shipping container as well as actual blind assembly for any visible damage, such as shown on Illustration 1 and 2 below:

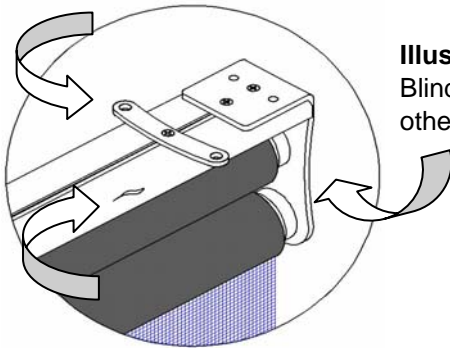


Illustration 1

Blind support bracket and/or mounting plate are dented or otherwise damaged. Mounting rail shows knicks or dents

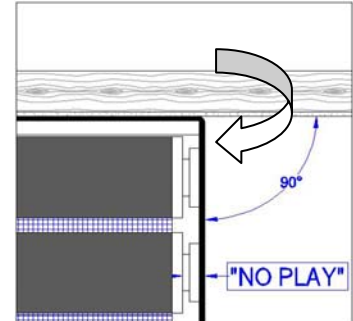


Illustration 2

Blind support bracket is out of angle (no longer 90°) and there is visible play between bracket and blind tube assembly.

If any damage is noticeable, **DO NOT INSTALL** blind assembly as this may inhibit the proper functioning of the product and may cause serious problems during operation.

INSTALLATION OF BLIND ASSEMBLY

IMPORTANT: Please follow below instructions carefully, as improper installation may cause product failure, which in turn could endanger the safe operation of the motor vehicle.

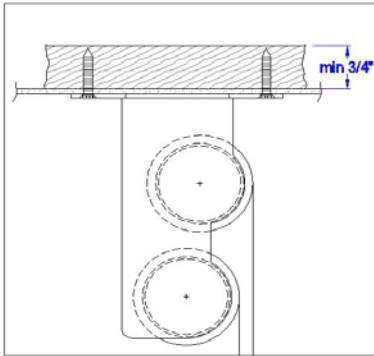


Illustration 3

Min. 3/4" solid backing must be provided for a safe installation. In the case of padded surfaces, please check with the blind manufacturer's technical dept.

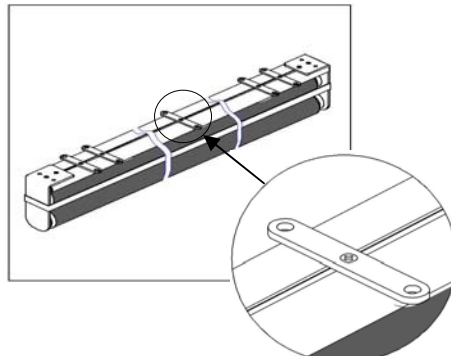


Illustration 4

Each blind assembly comes with 5 mounting plates; ALL plates must be installed and ALL mounting holes provided in each plate must be used to fasten unit to ceiling with 2 appropriate screws.

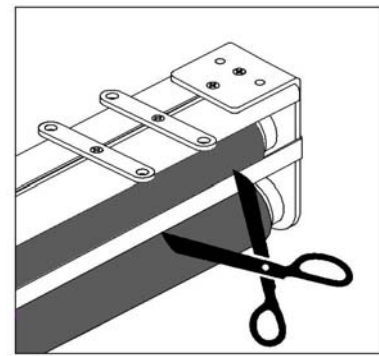


Illustration 5

Nylon strapping is wrapped around entire blind unit to prevent the two blinds from accidentally separating during transport. Cut and remove this strapping only AFTER installation is completed

WARNING: Dual Windshield Roller Blind must not be used as a visor nor operated while vehicle is in motion!!



AutoMotionShade®

181 Amber Street, Markham Ontario, Canada L3R 3B4, Tel: 905-470-6198 Fax: 905-479-2136
www.automotionshade.com