

2003

Phaeton®



"Experience a Lifetime Relationship"





Model: 40 GH
Wood Color: Walnut
Interior Color: Soapstone

Finally, the dream of owning a diesel motor home can become a reality with the value priced, multi-faceted Phaeton motor home. Plush carpeting, comfortable Flexsteel® furniture, and simulated oak, maple, or walnut cabinetry (with solid wood doors) are welcome standards in the affordable diesel unit.

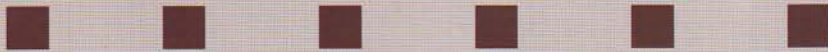




Travel in luxury, style, and comfort. The cockpit area offers supple yet supportive Flexsteel® driver and passenger seats (optional Ultra Leather shown below). Substantial storage is conveniently located in the overhead cabinetry. The easy to reach AM/FM radio with CD player and wooden snack tray complete the practicality of the cockpit design.



Our mission is to build lifetime relationships by doing our best to exceed the sales, service, and overall ownership expectations of Tiffin Motorhomes' owners and dealers.





Solid surface kitchen countertops may be an added option in competitors' motor homes, but it is a standard in the Phaeton. The luxurious galley is an integral part of the Phaeton - demonstrating the elegance of this affordable home. Abundant cabinet space, a microwave oven, a 3 burner cook top, and an 8 cubic foot refrigerator with raised door inserts furnish the galley with functionality. Decorative lighting accentuates the dining area, making dining an enjoyable experience.





No detail was ignored in the spacious bath area. Additional storage, a solid surface vanity top and bowl, vanity lighting, and a fiberglass molded tub/shower combine to make this a well-planned feature of the Phaeton motor home.



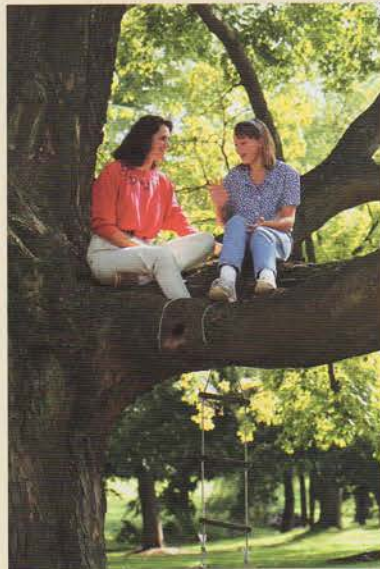
Not to be surpassed by other elements in the Phaeton, the bedroom will become a welcome retreat for the weary traveler. The bed comes equipped with an inner spring mattress, giving plenty of support while you slumber. Surrounding the bed, you'll find plentiful closet space, as well as additional storage space in the overhead cabinetry. A TV is also a standard feature in the bedroom.



Exterior Features



Air Driven Step Well Cover
and Vinyl Tile Entry

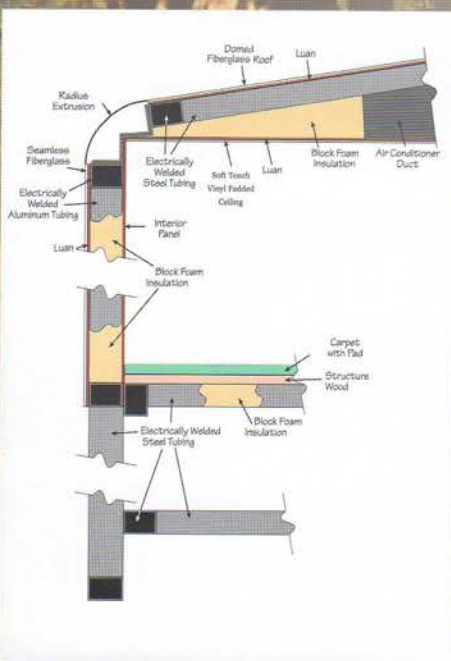


7.5 Kw Onan Generator



Specifications for the 2003 Phaeton

PHAETON MODEL:	35 RH	38 GH	40 GH	40 TGH
AUTOMOTIVE				
GVWR	26,850	29,410	29,410	29,410
GAWR - Front	9,350	10,410	10,410	10,410
GAWR - Rear	17,500	19,000	19,000	19,000
GCWR	36,850	39,410	39,410	39,410
UVW - Full Tank Fuel & One Half Tank Fresh Water	20,980	22,460	23,440	23,440
Freightliner	S	S	S	S
Raised rail chassis frame	S	S	S	S
Cummins Engine 300 HP	S	NA	NA	NA
Caterpillar Engine 330 HP	O	S	S	S
Transmission - Allison 3000MH Six-Speed Auto w/ Lock-up	S	S	S	S
Alternator Amps	130	130	130	130
Wheel Base	208	252	266	266
Tire Size	235/80R22.5	255/80R22.5	255/80R22.5	255/80R22.5
Tire Manufacturer	Michelin	Michelin	Michelin	Michelin
Air Ride (4 Bags)	S	S	S	S
Trailer Hitch Capacity	10,000	10,000	10,000	10,000
Air brakes with automatic slack adjusters	S	S	S	S
ABS brakes	S	S	S	S
Manual Leveling jacks	S	S	S	S
Cruise control	S	S	S	S
Emergency start switch	S	S	S	S
Exhaust Brake	S	S	S	S
Fuel Tank (Gallons)	100	100	100	100
OVERALL				
Overall Length	35'10"	38'11"	40'5"	40'5"
Overall Height w/Roof Air	12'3"	12'3"	12'3"	12'3"
Interior Height	80"	80"	80"	80"
Overall Width	101"	101"	101"	101"
Interior Width	96"	96"	96"	96"
Fresh Water (Gallons)	90	90	90	90
Black Water (Gallons)	45	45	45	45
Grey Water (Gallons)	70	70	70	70
LPG Tank (Gallons; can only be filled to 80% capacity)	35.7	35.7	35.7	35.7



Guaranteed!
 10-year Unitized Construction
 Warranty
 5-year Lamination Warranty

All sidewall, roof, floor, and end wall components are built with the best materials, then brought together in our lamination process – assuring the strongest, most rigid construction available. To learn more about our construction process, call and arrange for a factory visit and see for yourself why we offer a 10-year unitized construction warranty!



Shown above is a roof section having adhesive applied between layers of construction material.

Specifications for the 2003 Phaeton (continued)

PHAETON MODEL:	35 RH	38 GH	40 GH	40 TGH
STRUCTURAL				
Laminated Floor, Sidewall & Roof	S	S	S	S
Steel / Aluminum Reinforced Structure	S	S	S	S
EXTERIOR				
Fiberglass Front & Rear Caps	S	S	S	S
Dual fuel fills	S	S	S	S
Large Tinted Windshield	S	S	S	S
Fog Lights	S	S	S	S
7.5kW Onan Manual Slide-out Generator	S	S	S	S
Heated Power Mirrors w/ Remote Adjustment	S	S	S	S
Single Motor Intermittent Wiper	S	S	S	S
Gel-Coat Fiberglass Walls	S	S	S	S
Exterior Graphics	S	S	S	S
Dead Bolt Front Entrance Door	S	S	S	S
Double Electric Step	S	S	S	S
Dual Pane Windows	O	O	O	O
Single Pane Windows	S	S	S	S
Exterior Patio Light	S	S	S	S
Manual Door Awning	O	O	O	O
Manual Patio Awning	S	S	S	S
Electric Patio Awning	O	O	O	NA
Slideout Awning(s)	S	S	S	S
Slideout Room(s)	1	2	2	3
Wheel Liners	S	S	S	S
Alcoa Aluminum Wheels	O	O	O	O
Exterior Flip-up Storage Doors w/Gas Shocks	S	S	S	S
Single Handle, Lockable Storage Door Latches	S	S	S	S
Luggage Compartment Lights	S	S	S	S
Heated Water and Holding Tank Compartments	S	S	S	S
Two 6-Volt Auxiliary Batteries	S	S	S	S
2000 watt inverter w/ 100 amp converter & transfer switching + 2 6V batteries	O	O	O	O
Hadley Air Horns	O	O	O	O
Park Telephone Ready	S	S	S	S
Cable Ready	S	S	S	S
Black Tank Flush System	S	S	S	S
110v Exterior Receptacle	S	S	S	S
110v / 12v Converter	S	S	S	S
Undercoating	S	S	S	S
Domed Fiberglass Roof	S	S	S	S
Manual Satellite Dish	O	O	O	O
TV Antenna	S	S	S	S
CB Antenna	S	S	S	S
Cell Phone Antenna	O	O	O	O
Power Fantastic Roof Vent w/3-Speed Fan	S	S	S	S
2 - 15,000 BTU High Profile Roof A/C w/Heat Pump	S	S	S	S
Roof Ladder	S	S	S	S
Backup Camera and Monitor	S	S	S	S
Water Filter	O	O	O	O
DRIVER'S COMPARTMENT				
Flexsteel Cloth Driver and Passenger Seats	S	S	S	S
Power Cloth Driver Seat and Passenger Seats	O	O	O	O
Flexsteel Ultra Leather Power Driver and Passenger Seats	O	O	O	O
Step switch and 12 volt disconnect switch	S	S	S	S
Beverage Tray	S	S	S	S
Automotive Padded Dash	S	S	S	S
6 Disc CD Changer - In Dash	O	O	O	O
Single CD Player AM/FM Stereo	S	S	S	S
2 Each - 12-Volt Dash Receptacle	S	S	S	S
Dual Dash Fans	S	S	S	S
Windshield Privacy Curtain	S	S	S	S
27" Color TV	S	S	S	S
Panasonic VCR	S	S	S	S
Fire Extinguisher	S	S	S	S

All options may not be available in all models. Because of progressive improvements, specifications, standard and optional equipment are subject to change without notice or obligation.



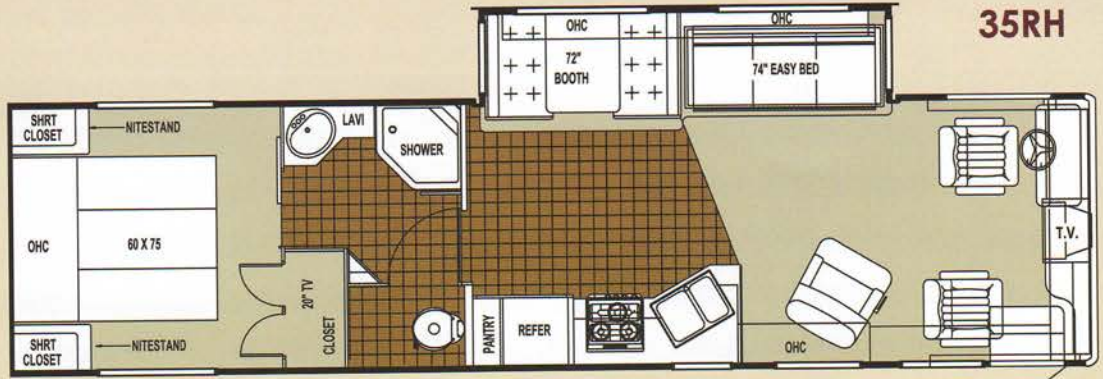
Specifications for the 2003 Phaeton (continued)

PHAETON MODEL:	35 RH	38 GH	40 GH	40 TGH
LIVING ROOM / DINETTE				
Cloth Recliner (Flexsteel)	S	S	S	S
Ultra Leather Recliner (Flexsteel)	O	O	O	O
Cloth Easy Bed (Flexsteel)	S	S	S	S
Ultra Leather J-Sofa (Flexsteel)	NA	O	O	O
Ultra Leather Sofa	O	O	O	O
Free Standing Dinette w/ Formica Table Top and Solid Surface Edging	O	O	O	O
Booth Dinette w/ Formica Table Top and Solid Surface Edging	S	S	S	S
KITCHEN				
Solid Surface Counter Top with Acrylic Sink	S	S	S	S
Solid Surface Sink Covers	S	S	S	S
Single Lever Sink Faucet	S	S	S	S
Convection/Microwave w/ 3 Burner Cook Top / No Oven / Large Drawer	O	O	O	O
Microwave Oven w/ 3 Burner Range with Oven	S	S	S	S
Raised Refrigerator Door Inserts	S	S	S	S
8 Cu. Ft. Refrigerator	S	S	S	S
10 Cu. Ft. Refrigerator	O	O	O	O
Side by Side Refrigerator w/Ice Maker	O	O	O	O
BATH				
Medicine Cabinet w/ Vanity Light	S	S	S	S
Solid Surface Vanity Top & Bowl	S	S	S	S
Fiberglass Molded Tub / Shower	S	S	S	S
Skylight in Shower	S	S	S	S
China Toilet	S	S	S	S
BEDROOM				
Wardrobe	S	S	S	S
Bed Comforter w/Throw Pillows	S	S	S	S
Inner Spring Mattress	S	S	S	S
Night Stands	S	S	S	S
20" Color TV in Bedroom	S	S	S	S
12-Volt Carbon Monoxide Detector	S	S	S	S
LPG Leak Detector	S	S	S	S
GENERAL INTERIOR				
Soft Touch Vinyl Ceiling	S	S	S	S
Raised Panel Cabinet Doors	S	S	S	S
Oak Cabinetry (Simulated)	S	S	S	S
Natural Maple Cabinetry (Simulated)	O	O	O	O
Walnut Cabinetry (Simulated)	O	O	O	O
Ceramic Tile Flooring in Kitchen, Bath & Entrance Landing	O	O	O	O
Vinyl Tile Flooring in Kitchen, Bath & Entrance Landing	S	S	S	S
Wall-to-wall Carpeting in Bedroom & Driver's Compartment	S	S	S	S
Scotchgard Treated Carpet and Fabrics	S	S	S	S
Day / Night Pleated Shades	S	S	S	S
12 volt Fluorescent Lights	S	S	S	S
Power Roof Vents with 3 Speed Fan	S	S	S	S
Home Theatre Sound System	O	O	O	O
Washer / Dryer	NA	O	O	O
Plumbed for Washer / Dryer with Cabinet	NA	O	O	O
Central Vacuum Cleaner	O	O	O	O
Tank Level Monitor System	S	S	S	S
Smoke Detector	S	S	S	S
10-gallon Gas/Electric Water Heater	S	S	S	S
One 35,000 BTU Ducted Furnace	S	NA	NA	NA
One 35,000 and One 20,000 Ducted Furnace	NA	S	S	S
Air Driven Stepwell Cover	S	S	S	S



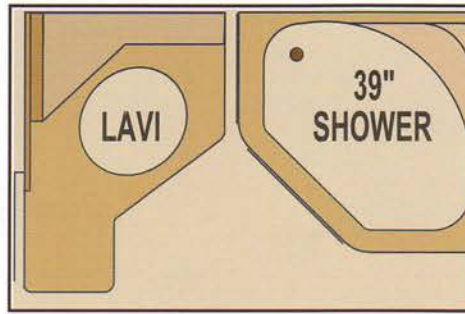
"Our family is building the Tiffin Motorhomes of the 21st century with every new customer who learns that they can trust and rely on us. We build good motorhomes. Just ask someone who owns one." – Bob Tiffin

Phaeton Floor Plans



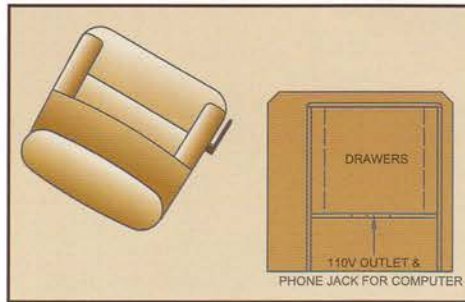
Shower Option

Available on 38 GH,
40 GH, and 40 TGH



Computer Desk Option

Available on 38 GH,
40 GH, and 40 TGH



Cabinet Selections



Oak (standard)

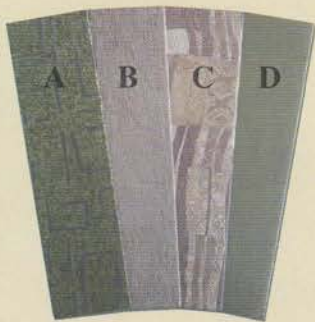


Walnut



Natural Maple

Interior Fabric Selections



Fabric Key for Adante

- A – Bedspread
- B – Chair
- C – Sofa
- D – Valance Boxes and Legs



Fabric Key for Soapstone

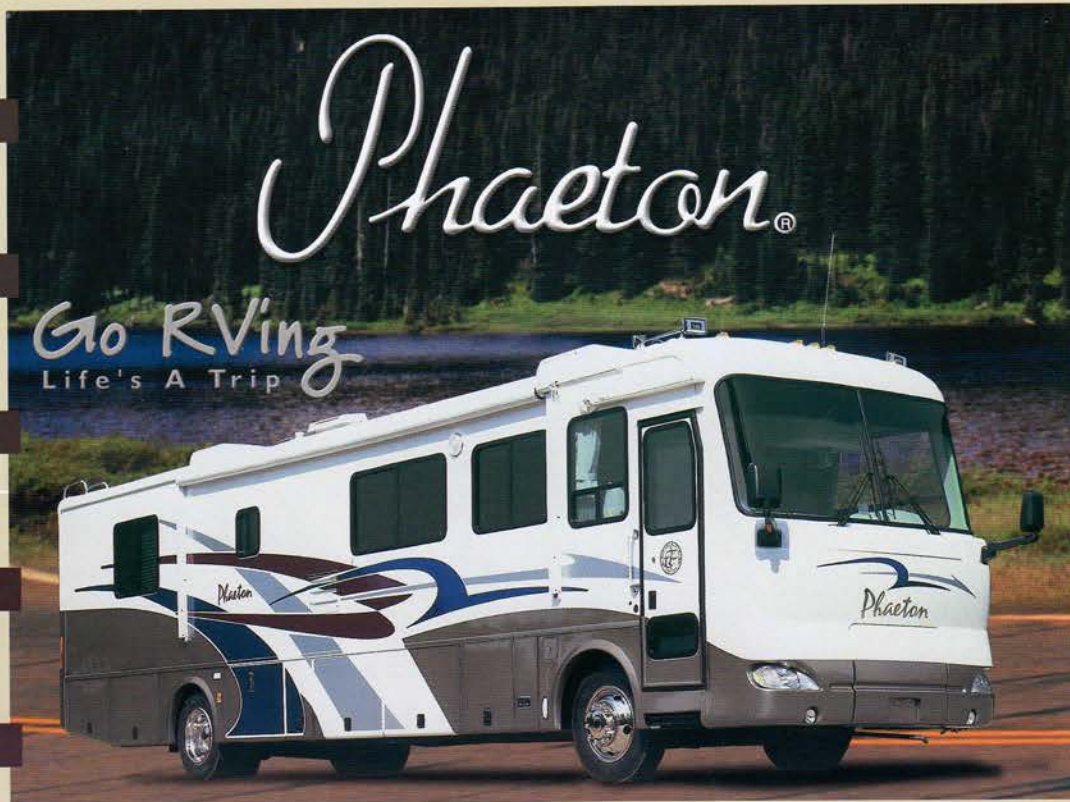
- A – Bedspread
- B – Sofa
- C – Dinette
- D – Valance Boxes and Legs



Fabric Key for Wineberry

- A – Bedspread
- B – Sofa
- C – Dinette
- D – Valance Boxes and Legs

While we try to represent the textiles accurately, color and hue shown here may vary from the original. See samples of these fabrics at your dealer for exact colors.



Celebrating 30 years of customer relationships! We at Tiffin Motor Homes have earned the reputation for the best-built motor coaches on the road - and after thirty years of unsurpassed quality and customer service, we are still just as committed to providing you with the best motor coach available. With a full-time staff dedicated to new product research and design, we are continually striving to improve the already outstanding quality and beauty of our motor coaches.

Our philosophy has always been to provide you – our friends – with a quality motor coach and the best customer service. Each Phaeton comes with a 10-year unitized construction warranty, and customer satisfaction unsurpassed in the industry. Just ask someone who owns one!

Your friend,
Bob Tiffin



Tiffin Motorhomes, Inc.

Tiffin Motor Homes, Inc.
105 2nd Street NW
Red Bay, Alabama 35582
(256) 356-8661

www.tiffinmotorhomes.com

Dealer:

The following names are registered trademarks of Tiffin Motor Homes: Open Road®, Phaeton®, Allegro®, Allegro Bay®, Allegro Bus®, Zephyr®, Roughing It Smoothly®, and Pusher®.