

# ALLEGRO BAY



TIFFIN MOTORHOMES



'05

WHEREVER YOU GO, WE GO.

# ALLEGRO BAY FABRICS & CABINETS '05

## PALM BEACH



Bedroom



Bedroom Accent



Sofa



Living Area Accent



Natural Maple

## SEAFOAM



Bedroom



Bedroom Accent



Sofa



Living Area Accent



Oak



Walnut

## MOCHA



Bedroom



Bedroom Accent



Sofa



Living Area Accent



Carpet

# ALLEGRO BAY EXTERIOR PAINT COLORS '05



**FIRE RED** PARTIAL BODY



**FIRE RED** FULL BODY\*



**REGAL BLUE** PARTIAL BODY



**REGAL BLUE** FULL BODY\*



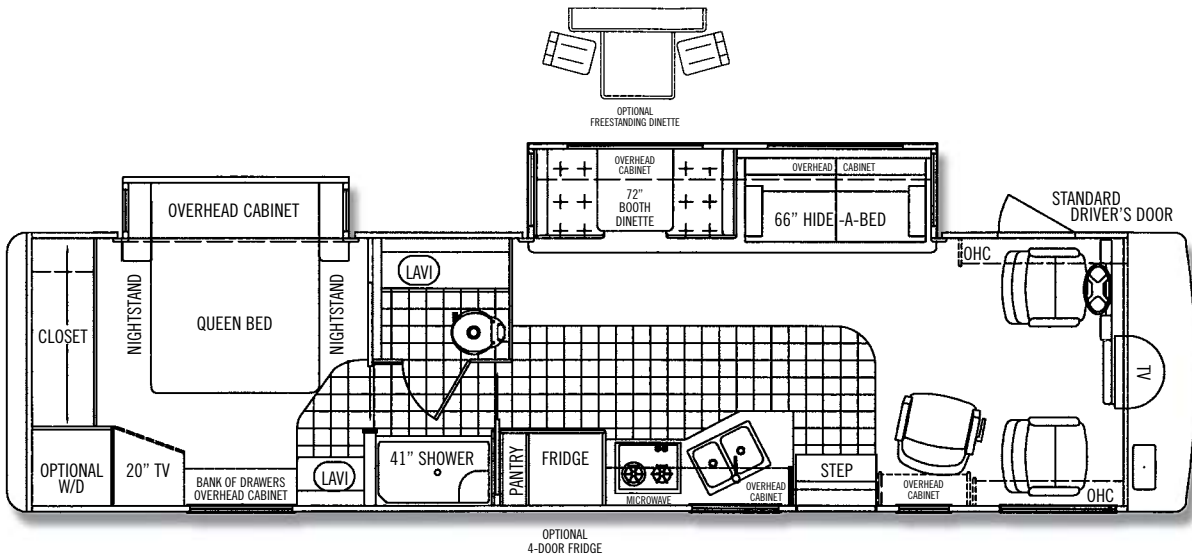
**SILVER SAND** PARTIAL BODY



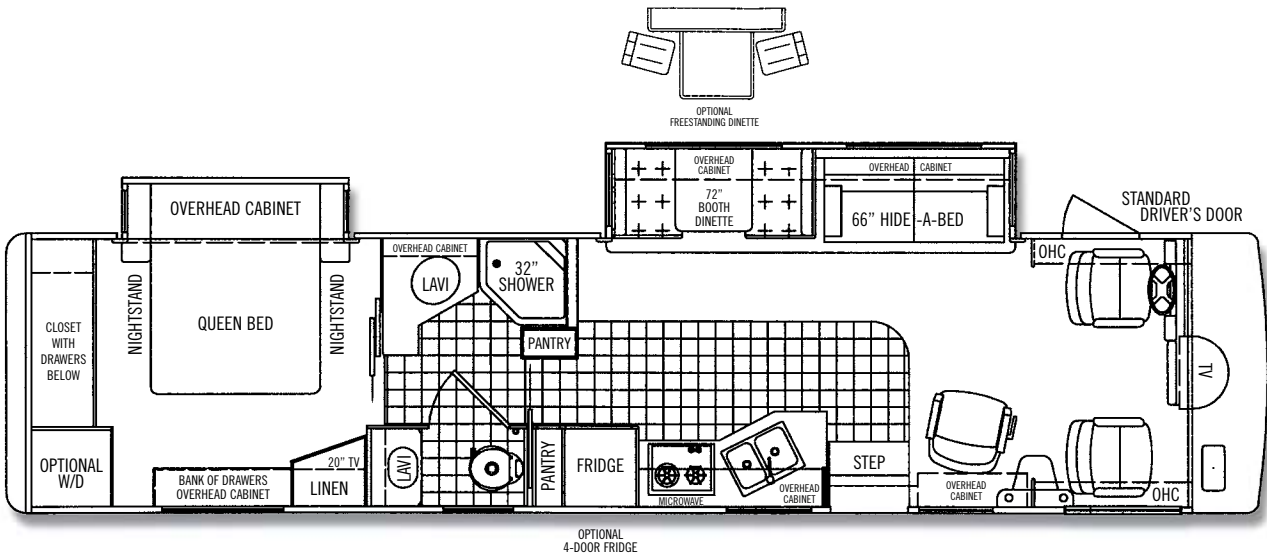
**SILVER SAND** FULL BODY\*

\*FULL BODY PAINT SCHEMES ARE OPTIONAL.

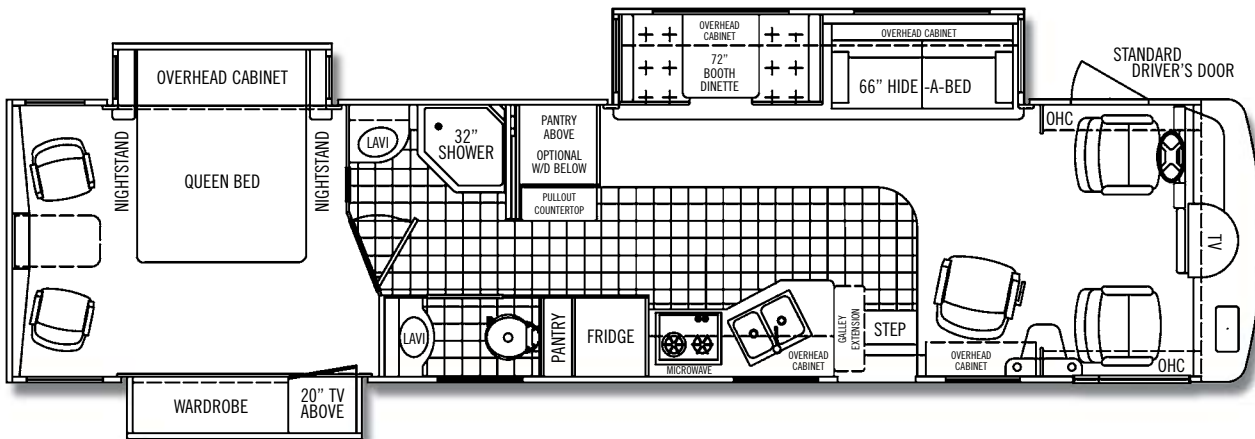
# ALLEGRO BAY FLOORPLANS '05



**34 XB**



**37 DB**



**38 TDB**  
AVAILABLE  
JANUARY '05

ADDITIONAL FLOORPLANS MAY BE AVAILABLE ON OUR WEBSITE.  
[www.tiffinmotorhomes.com](http://www.tiffinmotorhomes.com)

Aside from our unparalleled customer service, one of the things that Tiffin has been known for over the years is innovative floor plans.

# ALLEGRO BAY SPECIFICATIONS '05

## AUTOMOTIVE

### STANDARD EQUIPMENT ON ALL MODELS:

- Emergency Start
- Cruise Control

WORKHORSE CHASSIS	MODEL	34 XB	37 DB	38 TDB	FORD CHASSIS	MODEL	34 XB	37 DB
Engine – 340 HP		8.1 L V8	8.1 L V8	8.1 L V8	Engine – 310 HP		6.8L Triton V10	6.8L Triton V10
Torque (Lb.-Ft. Max. Net)		455 @ 3200	455 @ 3200	455 @ 3200	Torque (Lb.-Ft. Max. Net)		425 @ 3250	425 @ 3250
GVWR		22,000	22,000	24,000	GVWR		22,000	22,000
GAWR – Front		8,000	8,000	9,000	GAWR – Front		7,500	7,500
GAWR – Rear		14,500	14,500	15,500	GAWR – Rear		14,500	14,500
GCWR		26,000	26,000	30,000	GCWR		26,000	26,000
UVW		18,320	18,650	TBD	UVW		18,120	18,450
Wheel Base		228	246	TBD	Wheel Base		228	246
Tire Size		235/80R 22.5	235/80R 22.5	235/80R 22.5	Tire Size		245/70R 22.5	245/70R 22.5
Fuel Tank (Gallons)		75	75	75	Fuel Tank (Gallons)		75	75
Alternator Amps		130	130	130	Alternator Amps		130	130
• Front & Rear Leaf Suspension				• Tapered, Multi Leaf Suspension				
• Allison 1000 Series Automatic 5-Speed w/ Electric Control				• Electronically Controlled 4-Speed Automatic w/ Overdrive				

## OVERALL

	MODEL	34 XB	37 DB	38 TDB
Overall Length – Approximately		34' 11"	37' 3"	TBD
Overall Height with Roof Air (Maximum)		12' 4"	12' 4"	12' 4"
Interior Height		80"	80"	80"
Overall Width		101"	101"	101"
Interior Width		96"	96"	96"
Fresh Water (Gallons)		84	84	84
Black Water (Gallons)		45	45	45
Grey Water (Gallons)		45	52	TBD
LPG Tank (Gallons; can only be filled to 80% capacity)		31.3	31.3	31.3
Minimum Garage Height		13'	13'	13'

## STRUCTURAL

### STANDARD EQUIPMENT ON ALL MODELS:

- Laminated Floor, Sidewall & Roof
- Steel / Aluminum Reinforced Structure

## EXTERIOR

### STANDARD EQUIPMENT ON ALL MODELS:

- |   |  |                                   |  |
|---|--|-----------------------------------|--|
| • Fiberglass Front & Rear Cap                 | • 1/4" Single Pane Windows                     | • 50 Amp Service                  | • TV Antenna                                 |
| • Large Tinted Windshield                     | • Exterior Patio Light                         | • Park Telephone Ready            | • CB Antenna                                 |
| • Leveling Jacks                              | • Slideout Awning(s)                           | • Cable Ready TV                  | • Power Fantastic Roof Vent with 3-Speed Fan |
| • 7.0 Onan Generator                          | • Wheel Liners                                 | • Black Holding Tank Flush        | • 2 – 13,500 BTU High Profile Roof A/C       |
| • Single Motor Intermittent Wiper             | • Exterior Storage Doors with Gas Shocks       | • Exterior Rinse Hose / Shower    | • Roof Ladder                                |
| • Heated Power Mirrors with Remote Adjustment | • Single Handle, Lockable Storage Door Latches | • 110v Exterior Receptacle        | • Backup Camera and Monitor                  |
| • Gel-Coat Fiberglass Exterior                | • Ridged Long-Life Storage Boxes               | • 110v / 12v Converter (55 Amp)   | • Water Filter                               |
| • Painted Exterior Graphics                   | • Luggage Compartment Lights                   | • Undercoating                    | • 10 Gallon Gas / Electric Water Heater      |
| • Entrance Door with Screen Door and Deadbolt | • Heated Water and Holding-Tank Compartments   | • Driver's Door with Power Window |  |
| • Triple Electric Step                        | • Two 6v Auxiliary Batteries                   | • Domed Fiberglass Roof           |  |

	MODEL	34 XB	37 DB	38 TDB
Dual Pane Windows (Does not include entrance door)		0	0	0
Automatic Patio Awning (Required with full body paint option)		0	0	0
Slideout Rooms		2	2	3
Semi-Automatic Satellite Dish		0	0	0
Cell Phone Antenna		0	0	0
2 - 15,000 BTU High Profile Roof A/C with Heat Pump		0	0	0
Full Body Paint		0	0	0
TruCenter Steering System		0	0	0
Chrome Mirrors		0	0	0

## DRIVER'S COMPARTMENT

### STANDARD EQUIPMENT ON ALL MODELS:

- |                                   |                                      |                     |  |
|-----------------------------------|--------------------------------------|---------------------|--|
| • Entry Floor Light               | • Tilt Steering Wheel                | • VCR               | • Phone / Modem receptacle                               |
| • Snack / Beverage Tray           | • Dual Dash Fans                     | • Fire Extinguisher | • Non-powered Cloth Passenger & Driver Seats (Flexsteel) |
| • Single CD Player AM / FM Stereo | • Windshield Privacy Curtain         | • Driver's Door     | • Step Switch & 12v Disconnect Switch                    |
| • 12v Dash Receptacle             | • Large Flat-Screen Color TV (Front) | • 110v Receptacle   |  |

# ALLEGRO BAY SPECIFICATIONS '05

## DRIVER'S COMPARTMENT cont'd

MODEL	34 XB	37 DB	38 TDB
Power Cloth Driver Seat (Flexsteel)	0	0	0
Powered Ultra Leather Passenger / Driver Seat (Flexsteel)	0	0	0
Cloth Versa-Flex Automatic Sofa	0	0	0
Power Sun Visors	0	0	0
Inverter for Front TV	0	0	0

## LIVING AREA/DINETTE

### STANDARD EQUIPMENT ON ALL MODELS:

- Cloth Recliner (Flexsteel)
- Cloth Hide-A-Bed (Flexsteel)
- Booth Dinette
- Carbon Monoxide Detector

MODEL	34 XB	37 DB	38 TDB
Ultra Leather Recliner (Flexsteel)	0	0	0
Ultra Leather Hide-A-Bed (Flexsteel)	0	0	0
Free Standing Dinette with Storage	0	0	0
Cloth Magic Bed	0	0	0

## KITCHEN

### STANDARD EQUIPMENT ON ALL MODELS:

- Solid Surface Sink Covers
- Double Bowl Kitchen Sink (Stainless Steel)
- Convection Microwave (Stainless Steel)
- Solid Wood Kitchen Table
- Single Lever Sink Faucet with Pullout
- 2-Burner Cook Top
- 8 Cu. Ft. Refrigerator (Stainless Steel)
- Solid Surface Counter Tops

MODEL	34 XB	37 DB	38 TDB
3-Burner Cooktop with Oven	0	0	0
12 Cu. Ft. 4-Door Refrigerator (Stainless Steel)	0	0	0
10 Cu. Ft. Refrigerator with Ice Maker (Stainless Steel)	0	0	0

## BATH

### STANDARD EQUIPMENT ON ALL MODELS:

- Medicine Cabinet
- China Toilet
- Solid Surface Countertops
- Single Lever Faucet
- Skylight in Shower
- Glass Shower Door
- Solid Surface Sink Bowls
- Water Pump Switch

MODEL	34 XB	37 DB	38 TDB
Vanity Light	NA	S	S
41" Fiberglass Shower Surround	S	NA	NA
32" Corner Fiberglass Shower	NA	S	S

## BEDROOM

### STANDARD EQUIPMENT ON ALL MODELS:

- Bed Comforter with Throw Pillows
- Flat Screen Color TV in Bedroom
- Nightstands with 110v Receptacles
- Solid Wood Vanity with Storage
- Inner Spring Queen Mattress
- LPG Leak Detector

MODEL	34 XB	37 DB	38 TDB
AM / FM / CD Stereo	0	0	0

## GENERAL INTERIOR

### STANDARD EQUIPMENT ON ALL MODELS:

- Soft Touch Vinyl Ceiling
- Vinyl Tile Flooring in Kitchen, Bath & Entrance Landing
- Day / Night Pleated Shades
- Smoke Detector
- Raised Panel, Solid Hardwood Cabinet Doors
- Wall-to-Wall Carpeting in Bedroom & Driver's Compartment
- Tank Level Monitor System
- Oak Cabinetry (Simulated)
- Scotchgard® Treated Carpet and Fabrics
- Home Theatre Surround Sound System

MODEL	34 XB	37 DB	38 TDB
Natural Maple Cabinetry (Simulated)	0	0	0
Walnut Cabinetry (Simulated)	0	0	0
Washer / Dryer	0	0	0
Washer / Dryer Ready with Cabinet	0	0	0
Central Vacuum Cleaner	0	0	0
One 30,000 and One 20,000 Ducted Furnace	S	NA	NA
Two 30,000 Ducted Furnaces	NA	S	S