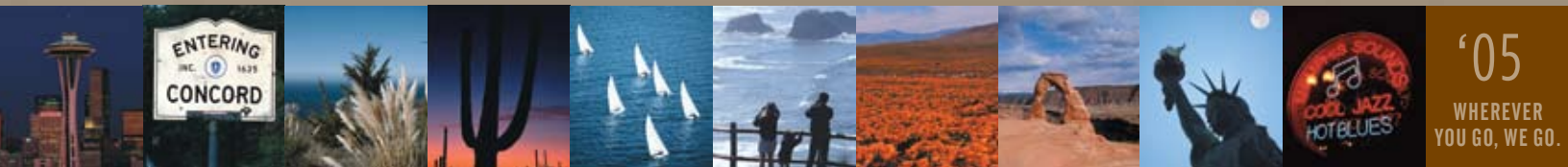


# PHAETON



**TIFFIN MOTORHOMES**



'05

WHEREVER YOU GO, WE GO.

# FABRICS & CABINETS

## BRONZE



Bedroom



Bedroom Accent



Sofa



Living Area Accent



Natural Maple

## PALM BEACH



Bedroom



Bedroom Accent



Sofa



Living Area Accent



Oak



Walnut

## PLATINUM



Bedroom



Bedroom Accent



Sofa



Living Area Accent



Carpet

# EXTERIOR PAINT COLORS

# PHAETON FLOORPLANS '05



**TITANIUM PEARL** FULL BODY



**FOREST ROSE** FULL BODY



**SUNLIT SAND** FULL BODY



**TITANIUM PEARL** WHITE BODY



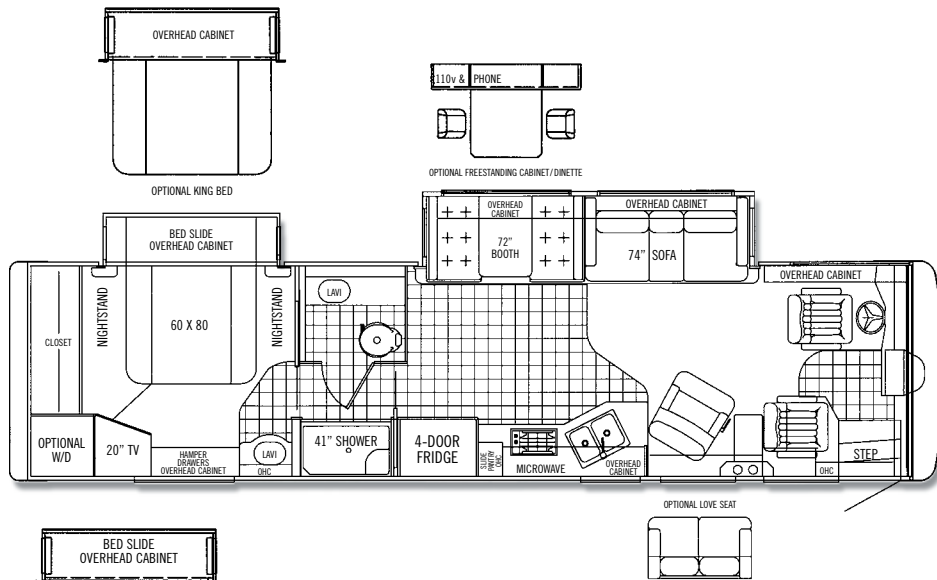
**FOREST ROSE** WHITE BODY



**SUNLIT SAND** WHITE BODY

We offer a variety of exterior paint packages.

Aside from our unparalleled customer service, one of the things that Tiffin has been known for over the years is innovative, functional floorplans.

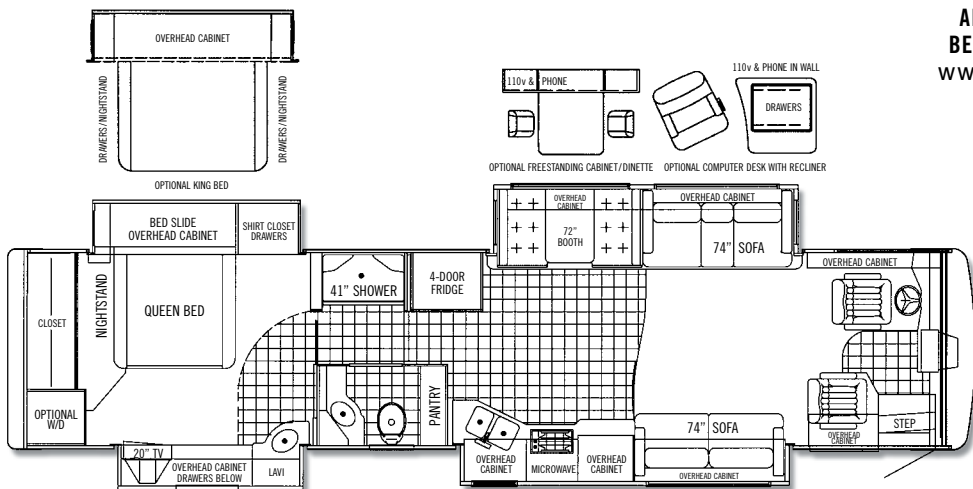
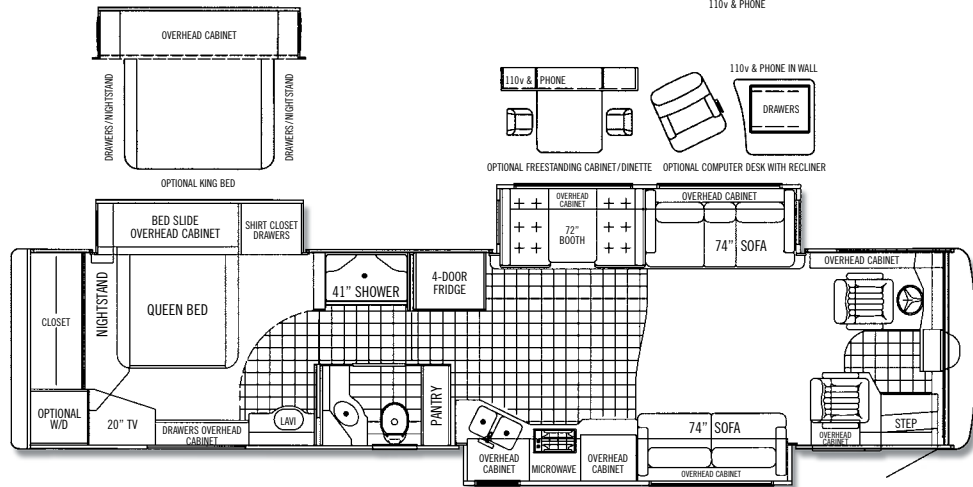
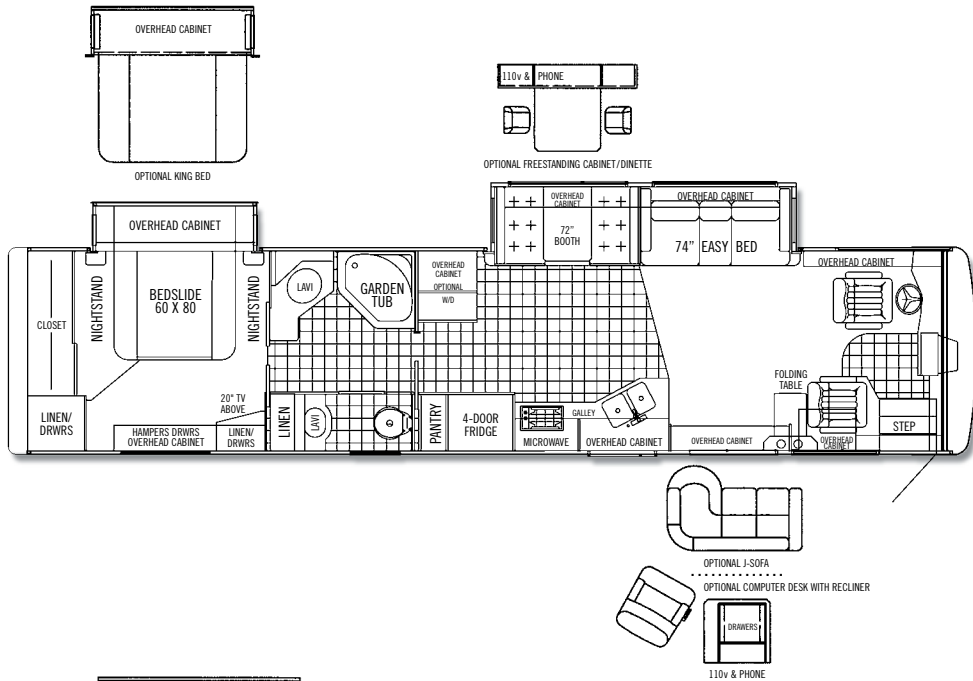


**35 DH**



**38 GH**

# PHAETON FLOORPLANS '05



ADDITIONAL FLOORPLANS MAY  
BE AVAILABLE ON OUR WEBSITE.  
[www.tiffinmotorhomes.com](http://www.tiffinmotorhomes.com)

# PHAETON SPECIFICATIONS '05

## AUTOMOTIVE

### STANDARD EQUIPMENT ON ALL MODELS:

- Raised Rail Chassis Frame
- Air Ride (4 Bags)
- Caterpillar Engine 350 HP
- Allison 3000 MH Six-speed Automatic Transmission with Lock-up
- Air Brakes with Automatic Slack Adjusters
- ABS Brakes
- Automatic Leveling Jacks
- Cruise Control
- Michelin Tires
- Emergency Start Switch
- Exhaust Brake

FREIGHTLINER CHASSIS	MODEL	35 DH	38 GH	40 RH	40 TSH	40 QDH
GVWR		29,410	29,410	29,410	29,410	29,410
GAWR – Front		10,410	10,410	10,410	10,410	10,410
GAWR – Rear		19,000	19,000	19,000	19,000	19,000
GCWR		39,410	39,410	39,410	39,410	39,410
Cummins 300 ISB Engine		0	NA	NA	NA	NA
Alternator Amps		130	130	130	130	130
Wheel Base		208	252	266	266	266
Tire Size		275/80R22.5	275/80R22.5	275/80R22.5	275/80R22.5	275/80R22.5
Trailer Hitch Capacity		10,000	10,000	10,000	10,000	10,000
Fuel Tank (Gallons) - Dual Fuel Fill		100	100	100	100	100

OVERALL	MODEL	35 DH	38 GH	40 RH	40 TSH	40 QDH
Overall Length – Approximately		35' 6"	38' 11"	40' 5"	40' 5"	40' 5"
Overall Height with Roof Air (Maximum)		12' 7"	12' 7"	12' 7"	12' 7"	12' 7"
Interior Height		83"	83"	83"	83"	83"
Overall Width		101"	101"	101"	101"	101"
Interior Width		96"	96"	96"	96"	96"
Fresh Water (Gallons)		90	90	90	90	90
Black Water (Gallons)		45	45	45	45	45
Grey Water (Gallons)		70	70	70	70	70
LPG Tank (Gallons; can only be filled to 80% capacity)		35.7	35.7	35.7	35.7	35.7
Minimum Garage Height		13'	13'	13'	13'	13'

## STRUCTURAL

### STANDARD EQUIPMENT ON ALL MODELS:

- Laminated Floor, Sidewall & Roof
- Steel/Aluminum Reinforced Structure

## EXTERIOR

### STANDARD EQUIPMENT ON ALL MODELS:

- Fiberglass Front & Rear Caps
- Dual Fuel Fills
- Large Tinted One Piece Windshield
- Fog Lights
- 7.5 Kw Onan Manual Slide-out Generator
- Heated Power Mirrors with Remote Adjustment
- Single Motor Intermittent Wiper
- Gel-Coat Fiberglass Walls
- Exterior Graphics
- Deadbolt Front Entrance Door
- Double Electric Step
- Dual Pane Windows
- Exterior Patio Light
- Automatic Patio Awning
- Slideout Awnings
- Wheel Liners
- Mud Flap
- Exterior Flip-up Storage Doors with Gas Shocks
- Single Handle Lockable Storage Door Latches
- Lighted Exterior Storage
- Docking Lights
- Heated Water and Holding Tank Compartments
- Two 6v Auxiliary Batteries
- 2000 Watt Inverter with 100 Amp Converter & Transfer Switching + Four 6v Batteries
- Park Telephone Ready
- Cable Ready TV
- Black Tank Flush System
- 110v Exterior Receptacle
- 110v/12v Converter
- Undercoating
- Domed Fiberglass Roof
- TV Antenna
- CB Antenna
- Power Fantastic Roof Vent with 3-speed Fan
- 2 - 15,000 BTU High Profile Roof A/C with Heat Pump
- A/C Condensation Drains
- Roof Ladder
- Backup Camera and Monitor
- Water Filter

	MODEL	35 DH	38 GH	40 RH	40 TSH	40 QDH
Full Body Paint		0	0	0	0	0
Spotlight		0	0	0	0	0
Manual Door Awning		0	0	0	0	0
Power Door Awning		0	0	0	0	0
Window Awning Package		0	0	0	0	0
Slideout Rooms		2	2	2	3	4
Aluminum Wheels		0	0	0	0	0
Exterior Storage Slide Out Tray		0	0	0	0	0
Hadley Air Horns		0	0	0	0	0
Semi-Automatic Satellite Dish		0	0	0	0	0
Automatic Satellite Dish		0	0	0	0	0
Cell Phone Antenna		0	0	0	0	0

## DRIVER'S COMPARTMENT

### STANDARD EQUIPMENT ON ALL MODELS:

- Flexsteel Ultra Leather Power Driver and Passenger Seats with Foot Rest
- Windshield Privacy Curtain
- Automotive Padded Dash
- Dual Dash Fans
- Snack/Beverage Tray with Drawers
- Step Switch and 12v Disconnect Switch
- 12v Dash Receptacle
- Single CD Player AM/FM Stereo
- VCR
- 24" Flat Screen Color TV
- Fire Extinguisher

# PHAETON SPECIFICATIONS '05

## DRIVER'S COMPARTMENT cont'd

MODEL	35 DH	38 GH	40 RH	40 TSH	40 QDH
6 Disc CD Changer - In Dash	0	0	0	0	0
Power Sun Visors	0	0	0	0	0
Computer Navigational System	0	0	0	0	0
Chrome Mirrors	0	0	0	0	0

## LIVING AREA/DINETTE

### STANDARD EQUIPMENT ON ALL MODELS:

- Cloth Easy Bed (Flexsteel)
- Booth Dinette with Laminate Table Top and Solid Surface Edging

MODEL	35 DH	38 GH	40 RH	40 TSH	40 QDH
Cloth Recliner (Flexsteel) with Folding Table	S	S	S	NA	NA
Computer Desk / Main Living Room Slide with Recliner	NA	NA	NA	0	0
Ultra Leather Recliner (Flexsteel)	0	0	0	0	0
Ultra Leather J-Lounge Sofa (Flexsteel)	NA	0	0	NA	NA
Love Seat	0	NA	NA	NA	NA
Ultra Leather EZ Bed Sofa	0	0	0	S	S
Cloth Magic Bed	0	0	0	0	0
Ultra Leather Magic Bed	0	0	0	0	0
Cloth Hide-a-bed	0	NA	0	S	S
Ultra Leather Hide-a-bed	0	NA	0	0	0
Free Standing Dinette with Laminate Table Top Solid Surface Edging & Built-in Cabinet	0	0	0	0	0

## KITCHEN

### STANDARD EQUIPMENT ON ALL MODELS:

- Solid Surface Counter Top with Stainless Steel Sink
- Single Lever Sink Faucet with Pullout
- Side-by-side Refrigerator with Ice Maker
- Solid Surface Sink and Stove Covers
- Convection / Microwave with Large Drawer

MODEL	35 DH	38 GH	40 RH	40 TSH	40 QDH
Convection / Microwave / Gas Oven	0	0	0	0	0

## BATH

### STANDARD EQUIPMENT ON ALL MODELS:

- Medicine Cabinet with Vanity Light
- Solid Surface Vanity Top & Bowl
- Fiberglass Molded Tub or Shower
- Rain Glass Shower Door
- Skylight in Shower
- China Toilet

MODEL	35 DH	38 GH	40 RH	40 TSH	40 QDH
Garden Tub	NA	0	0	NA	NA
Extra Fantastic Fan	0	0	0	0	0

## BEDROOM

### STANDARD EQUIPMENT ON ALL MODELS:

- Wardrobe
- Inner Spring Mattress
- 20" Color TV in Bedroom
- LPG Leak Detector
- Bed Comforter with Throw Pillows
- Night Stands
- Carbon Monoxide Detector
- Chest of Drawers with Laundry Hamper
- Bed Slide with Built-in Storage

MODEL	35 DH	38 GH	40 RH	40 TSH	40 QDH
Pillow Top Mattress	0	0	0	0	0
King Bed	0	0	0	0	0

## GENERAL INTERIOR

### STANDARD EQUIPMENT ON ALL MODELS:

- 7' Ceilings
- Oak Cabinetry (Simulated)
- Power Roof Vents with 3 Speed Fans
- Soft Touch Vinyl Ceiling
- Treated Carpet and Fabrics
- Tank Level Monitor System
- Armstrong® Plank Flooring in Kitchen, Bath & Entrance Landing
- Day / Night Pleated Shades
- Smoke Detector
- Carpeting in Bedroom & Driver's Compartment with Scotchgard®
- 12 Volt Fluorescent Lights
- 10-Gal Gas / Electric Water Heater
- Raised Panel Hardwood Cabinet Doors
- Home Theatre Sound System
- Air Driven Step Well Cover

MODEL	35 DH	38 GH	40 RH	40 TSH	40 QDH
Natural Maple Cabinetry (Simulated)	0	0	0	0	0
Walnut Cabinetry (Simulated)	0	0	0	0	0
Ceramic Tile Flooring on Kitchen, Bath & Entrance Landing	0	0	0	0	0
Washer / Dryer	0	0	0	0	0
Plumbed for Washer / Dryer with Cabinet	0	0	0	0	0
Central Vacuum Cleaner	0	0	0	0	0
One 42,000 BTU Ducted Furnace	S	NA	NA	NA	NA
One 35,000 BTU Ducted Furnace & One 20,000 BTU Ducted Furnace	NA	S	NA	NA	NA
One 42,000 BTU Ducted Furnace & One 20,000 BTU Ducted Furnace	NA	NA	S	NA	NA
Two 30,000 BTU Ducted Furnaces	NA	NA	NA	S	S