

TIFFIN MOTORHOMES

WHEREVER YOU GO, WE GO.

2006 SPECIFICATIONS

TIFFIN

ALLEGRO BAY

PAINT COLORS



**FIRE RED** Partial Body



**FIRE RED** Full Body\*



**REGAL BLUE** Partial Body



**REGAL BLUE** Full Body\*



**SILVER SAND** Partial Body



**SILVER SAND** Full Body\*

\*Full Body paint schemes are optional.

Tiffin Motorhomes, Inc. 105 2nd Street NW Red Bay, AL 35582  
Call 256.356.8661 Fax 256.356.8219 [www.tiffinmotorhomes.com](http://www.tiffinmotorhomes.com)  
For Parts and Service Call 256.356.0261

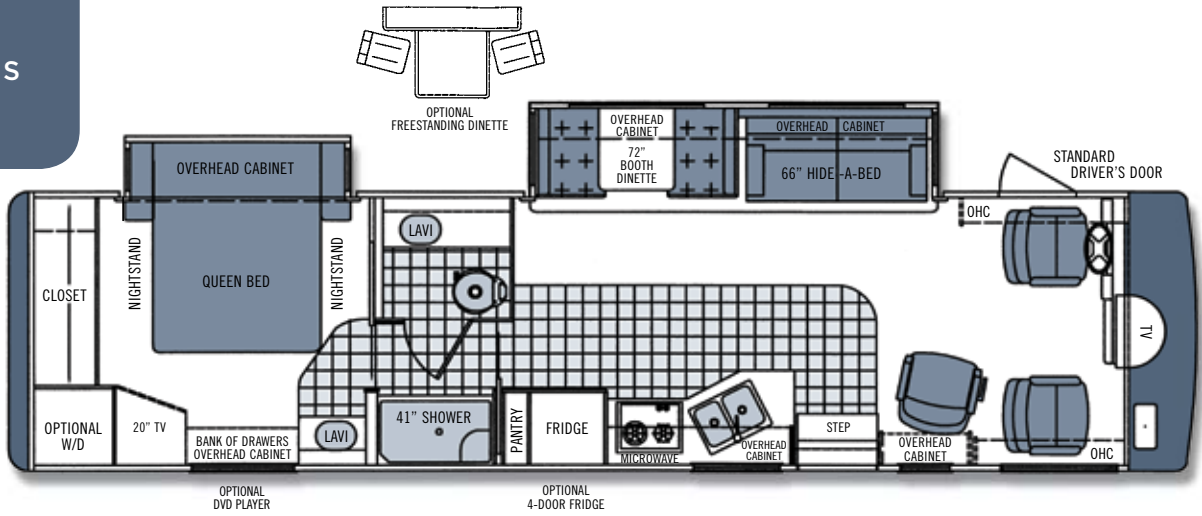
The following names are registered trademarks of Tiffin Motorhomes:  
Open Road®, Phaeton®, Allegro®, Allegro Bay®, Allegro Bus®, Zephyr®, Roughing It Smoothly®, and Pusher®.

TIFFIN

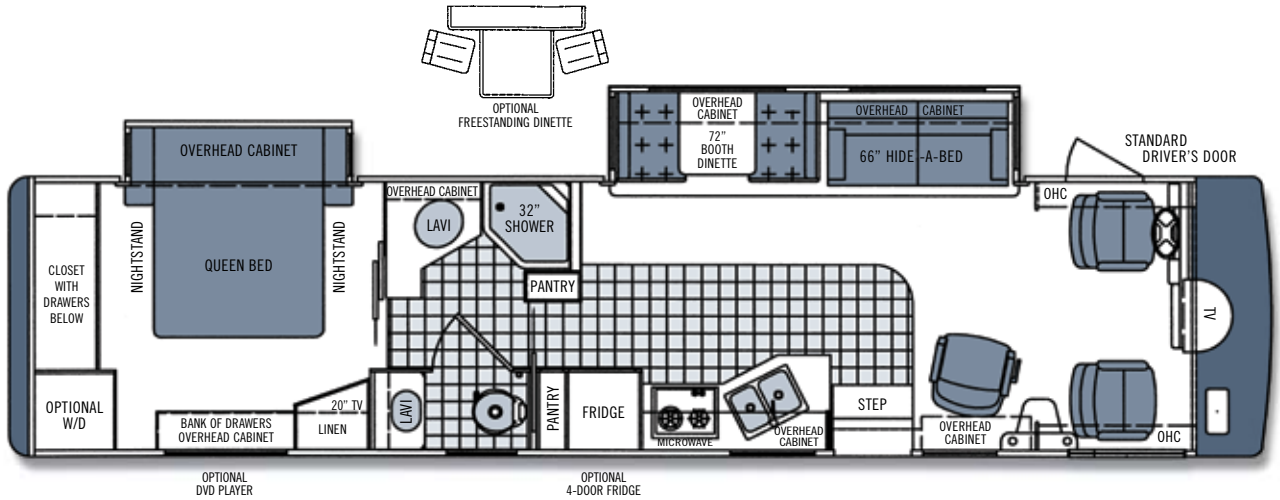
ALLEGRO BAY

FLOOR PLANS

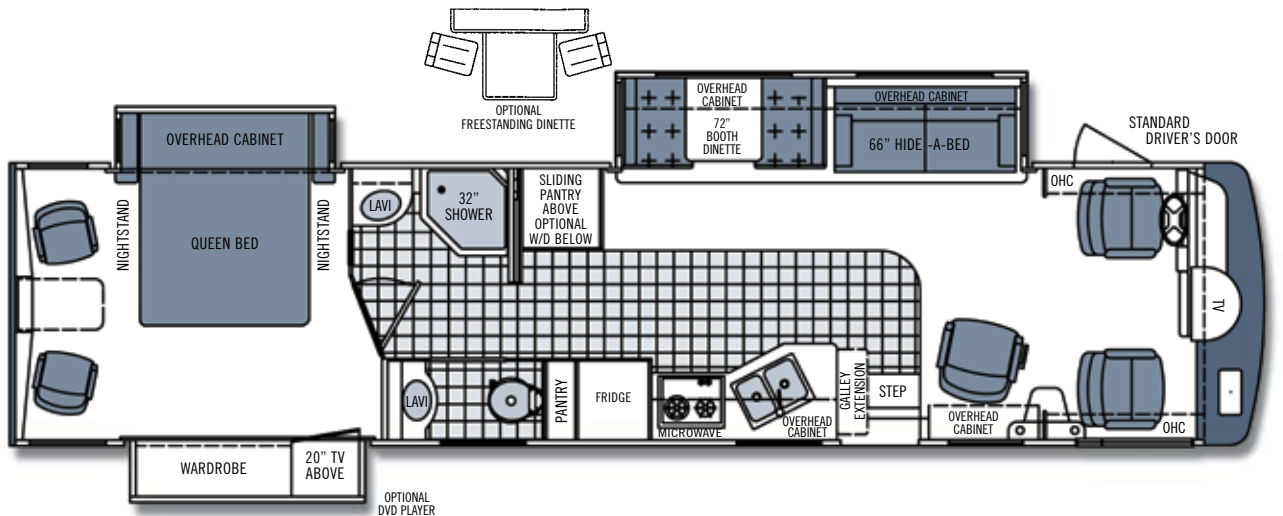
34 XB



37 DB



38 TDB



Additional floorplans may be available on our website: [www.tiffinmotorhomes.com](http://www.tiffinmotorhomes.com)  
Aside from our unparalleled customer service, one of the things that Tiffin has been known for over the years is innovative floorplans.

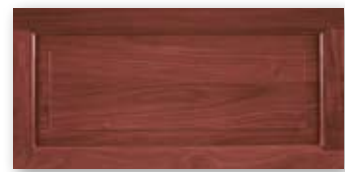
TIFFIN

ALLEGRO BAY

CABINETS  
FABRICS  
AND SPECS



Natural Maple



Cherry Bark



Oak



Carpet

**PALM BEACH**



Bedroom



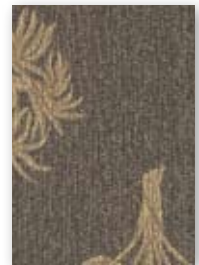
Bedroom Accent



Sofa/Chair



Living Area Accent



Dinette

**LAKESHORE**



Bedroom



Bedroom Accent



Sofa/Chair



Living Area Accent

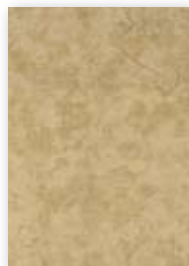


Dinette

**GRANITE**



Bedroom



Bedroom Accent



Sofa/Chair



Living Area Accent



Dinette

Our fabric designs and choices of wood grain are sure to suit every taste. All cabinet finishes are available in combination with all fabric schemes.

## AUTOMOTIVE

### STANDARD EQUIPMENT ON ALL MODELS:

- Emergency Start
- Cruise Control

WORKHORSE CHASSIS	MODEL	34 XB	34 XB	37 DB	37 DB	38 TDB	FOR D CHASSIS	MODEL	34 XB	37 DB
Engine – 340 HP		8.1 L V8	8.1 L V8	8.1 L V8	8.1 L V8	8.1 L V8	Engine – 362 HP		6.8L Triton V10	6.8L Triton V10
Torque (Lb.-Ft. Max. Net)		455 @ 3200	455 @ 3200	455 @ 3200	455 @ 3200	455 @ 3200	Torque (Lb.-Ft. Max. Net)		457@3250	457@3250
GVWR		22,000	24,000	22,000	24,000	24,000	GVWR		22,000	22,000
GAWR – Front		8,000	9,000	8,000	9,000	9,000	GAWR – Front		7,500	7,500
GAWR – Rear		14,500	15,500	14,500	15,500	15,500	GAWR – Rear		14,500	14,500
GCWR		26,000	30,000	26,000	30,000	30,000	GCWR		26,000	26,000
UVW		18,320	19,800	18,650	19,800	19,890	UVW		18,120	18,450
Wheel Base		228	228	246	246	254	Wheel Base		228	246
Tire Size		235/80R 22.5	235/80R 22.5	235/80R 22.5	235/80R 22.5	235/80R 22.5	Tire Size		245/70R 22.5	245/70R 22.5
Fuel Tank (Gallons)		75	75	75	75	75	Fuel Tank (Gallons)		75	75
Alternator Amps		130	130	130	130	130	Alternator Amps		130	130
Allison Automatic 5-Speed							Aluminum Wheels		S	S
w/ Electric Control		S	S	S	S	S	Electronically Controlled 5-Speed Automatic w/ Overdrive		S	S

## OVERALL

	MODEL	34 XB	37 DB	38 TDB
Overall Length – Approximately		34' 11"	37' 3"	38' 6"
Overall Height with Roof Air (Maximum)		12' 4"	12' 4"	12' 4"
Interior Height		80"	80"	80"
Overall Width		101"	101"	101"
Interior Width		96"	96"	96"
Fresh Water (Gallons)		84	84	84
Black Water (Gallons)		45	45	45
Grey Water (Gallons)		45	52	52
LPG Tank (Gallons; can only be filled to 80% capacity)		31.3	31.3	31.3
Minimum Garage Height		13'	13'	13'

## STRUCTURAL

### STANDARD EQUIPMENT ON ALL MODELS:

- Laminated Floor, Sidewall & Roof
- Steel / Aluminum Reinforced Structure

## EXTERIOR

### STANDARD EQUIPMENT ON ALL MODELS:

- Fiberglass Front & Rear Cap
- Large Tinted Windshield
- Atwood Automatic Electric Jacks
- 7.0 Onan Generator
- Single Motor Intermittent Wiper
- Heated Power Mirrors with Remote Adjustment
- Gel-Coat Fiberglass Exterior
- Painted Exterior Graphics
- Entrance Door with Screen Door and Deadbolt
- Triple Electric Step
- 1/4" Single Pane Windows
- Exterior Patio Light
- 1-Step Automatic Awning
- Slideout Awning(s)
- Wheel Liners
- Exterior Storage Doors with Gas Shocks
- Single Handle, Lockable Storage Door Latches
- Ridged Long-Life Storage Boxes
- Luggage Compartment Lights
- Heated Water and Holding-Tank Compartments
- 2 – 6v Auxiliary Batteries
- 50 Amp Service
- Park Telephone Ready
- Cable Ready TV
- Black Holding Tank Flush
- Exterior Rinse Hose / Shower
- 110v Exterior Receptacle
- 110v/12v Converter (55 Amp)
- Undercoating
- Driver's Door with Power Window
- Domed Fiberglass Roof
- TV Antenna
- CB Antenna
- Power Fantastic Roof Vent with 3-Speed Fan
- 2 – 13,500 BTU High Profile Roof A/C
- Roof Ladder
- Backup Camera
- Water Filter
- 10 Gallon Gas/Electric Water Heater

	MODEL	34 XB	37 DB	38 TDB
Dual Pane Windows (Does not include entrance door)		0	0	0
Semi-Automatic Satellite Dish		0	0	0
Automatic Satellite Dish		0	0	0
Cell Phone Antenna		0	0	0
2 - 15,000 BTU High Profile Roof A/C with Heat Pump		0	0	0
Full Body Paint		0	0	0
Chrome Mirrors		0	0	0

## DRIVER'S COMPARTMENT

### STANDARD EQUIPMENT ON ALL MODELS:

- Entry Floor Light
- Snack / Beverage Tray
- Single CD Player AM / FM Stereo
- 12v Dash Receptacle
- Tilt Steering Wheel
- Dual Dash Fans
- Color Back-up Monitor
- Windshield Privacy Curtain
- Large Flat-Screen Color TV
- Fire Extinguisher
- Driver's Door
- 110v Receptacle
- Phone / Modem Receptacle
- Non-Powered Cloth Passenger & Driver Seats (Flexsteel)<sup>®</sup>
- Step Switch & 12v Disconnect Switch

	MODEL	34 XB	37 DB	38 TDB
Powered Ultra Leather Passenger / Driver Seat (Flexsteel) <sup>®</sup>		0	0	0
Power Sun Visors		0	0	0
Side Sun Shades on Passenger / Driver Sides		0	0	0
1000 Watt Inverter for Front TV		0	0	0
Sirius Radio (Requires Subscription)		0	0	0

## LIVING AREA/DINETTE

### STANDARD EQUIPMENT ON ALL MODELS:

- Cloth Recliner (Flexsteel)<sup>®</sup>
- Cloth Hide-A-Bed (Flexsteel)<sup>®</sup>
- Booth Dinette
- Carbon Monoxide Detector

MODEL	34 XB	37 DB	38 TDB
Ultra Leather Recliner (Flexsteel) <sup>®</sup>	0	0	0
Ultra Leather Hide-A-Bed (Flexsteel) <sup>®</sup>	0	0	0
Ultra Leather Magic Bed - 66"	0	0	0
Cloth Magic Bed - 66"	0	0	0
Free Standing Dinette with Shelf and Storage	0	0	0
VCR	0	0	0

## KITCHEN

### STANDARD EQUIPMENT ON ALL MODELS:

- Solid Surface Sink Covers
- Double Bowl Kitchen Sink (Stainless Steel)
- Convection Microwave (Stainless Steel)
- Solid Wood Kitchen Table
- Single Lever Sink Faucet with Pullout
- 2-Burner Cook Top
- 8 Cu. Ft. Refrigerator (Stainless Steel)
- Solid Surface Counter Tops
- Full Extension Ball Bearing Drawer Slides

MODEL	34 XB	37 DB	38 TDB
3-Burner Cooktop with Oven	0	0	0
12 Cu. Ft. 4-Door Refrigerator with Ice Maker (Stainless Steel)	0	0	0
10 Cu. Ft. Refrigerator with Ice Maker (Stainless Steel)	0	0	0
Wood Plank Galley Floor (Not Available with Cherry Bark Cabinets)	0	0	0

## BATH

### STANDARD EQUIPMENT ON ALL MODELS:

- Medicine Cabinet
- China Toilet
- Solid Surface Countertops
- Single Lever Faucet
- Skylight in Shower
- Glass Shower Door
- Solid Surface Sink Bowls
- Water Pump Switch

MODEL	34 XB	37 DB	38 TDB
Vanity Light	NA	S	S
41" Fiberglass Shower Surround	S	NA	NA
32" Fiberglass Shower	NA	S	S
Extra Fantastic Fan	0	0	0

## BEDROOM

### STANDARD EQUIPMENT ON ALL MODELS:

- Bed Comforter with Throw Pillows
- Flat Screen Color TV
- Nightstands with 110v Receptacles
- Inner Spring Queen Mattress
- LPG Leak Detector
- Solid Wood Vanity with Storage

MODEL	34 XB	37 DB	38 TDB
AM / FM / CD Stereo	0	0	0
DVD Player	0	0	0
Select Comfort (Dual Control) Bed System	0	0	0

## GENERAL INTERIOR

### STANDARD EQUIPMENT ON ALL MODELS:

- Soft Touch Vinyl Ceiling
- Oak Cabinetry (Simulated)
- Scotchgard<sup>®</sup> Treated Carpet and Fabrics
- Home Theatre Surround Sound System
- Raised Panel, Solid Hardwood Cabinet Doors
- Armstrong<sup>®</sup> Vinyl Tile Flooring in Kitchen, Bath & Entrance
- Day / Night Pleated Shades
- Concealed Speakers
- Full Extension Drawer Slides
- Wall-to-Wall Carpeting in Bedroom & Driver's Compartment
- Tank Level Monitor System
- Smoke Detector

MODEL	34 XB	37 DB	38 TDB
Natural Maple Cabinetry (Simulated)	0	0	0
Cherry Bark Cabinetry (Simulated)	0	0	0
Washer / Dryer	0	0	0
Central Vacuum Cleaner	0	0	0
1 - 30,000 and 1 - 20,000 Ducted Furnace	S	NA	NA
2 - 30,000 Ducted Furnaces	NA	S	S