

PHAETON SPECIFICATIONS

2007



TIFFIN MOTORHOMES

WHEREVER YOU GO, WE GO.

TIFFIN

PHAETON

PAINT
COLORS



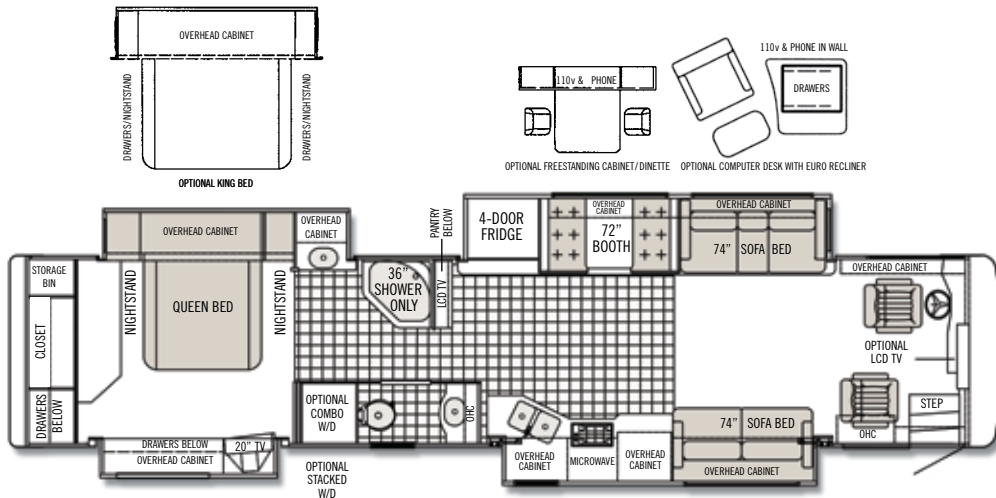
SILVER SAND Full Body



SUNLIT SAND Full Body



TITANIUM PEARL Full Body

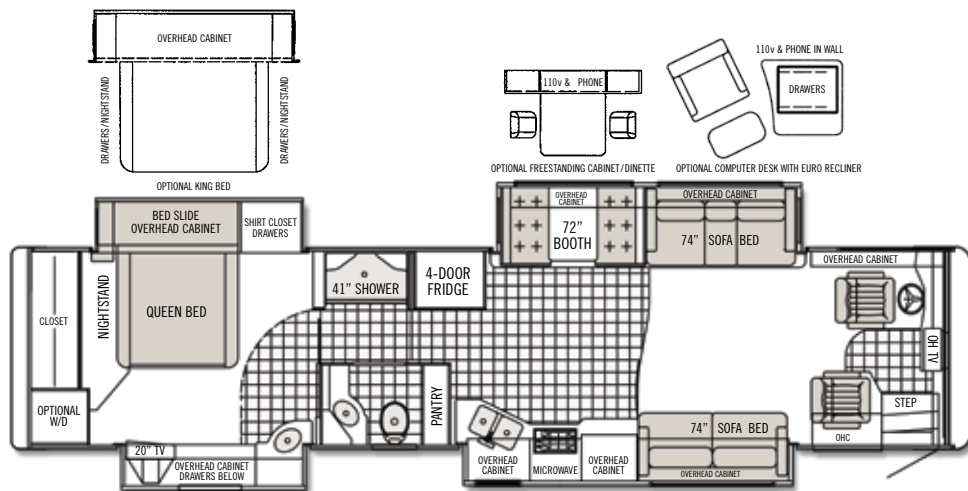


Additional floor plans may be available on our website: www.tiffinmotorhomes.com
Aside from our unparalleled customer service, one of the things that Tiffin has been known for over the years is innovative floor plans.

TIFFIN
PHAETON
FLOOR PLANS



35 DH



40 QDH



40 QSH

Tiffin Motorhomes, Inc. 105 2nd Street NW Red Bay, AL 35582
Call 256.356.8661 Fax 256.356.8219 www.tiffinmotorhomes.com

For Parts and Service Call 256.356.0261

The following names are registered trademarks of Tiffin Motorhomes:

Open Road®, Phaeton®, Allegro®, Allegro Bay®, Allegro Bus®, Zephyr®, Roughing It Smoothly®, and Pusher®

TIFFIN

PHAETON

CABINETS
FABRICS
AND SPECS

REV 11/06



Natural Maple



Cherry Bark



Medium Alderwood



Carpet

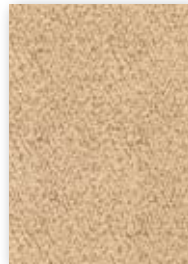
CINNABAR



Bedroom



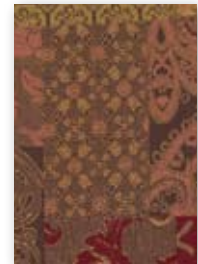
Bedroom Accent



Sofa/Chair



Living Area Accent



Dinette

PATINA



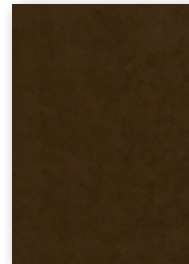
Bedroom



Bedroom Accent



Sofa/Chair



Living Area Accent

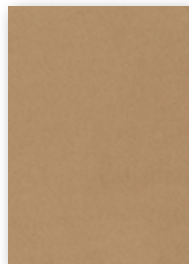


Dinette

TUXEDO



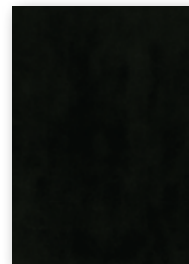
Bedroom



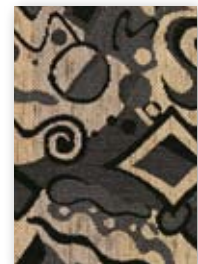
Bedroom Accent



Sofa/Chair



Living Area Accent



Dinette

Our fabric designs and choices of wood grain are sure to suit every taste.
All cabinet finishes are available in combination with all fabric schemes.

AUTOMOTIVE

STANDARD EQUIPMENT ON ALL MODELS:

- Raised Rail Chassis Frame
- Adjustable Fuel and Brake Pedals
- 55" Wheel Cut
- VIP 18" Steering Wheel
- Air Ride (4 Air Bags)
- Allison 3000 MH Six-speed Automatic Transmission with Lock-up
- Fog Lights
- Cruise Control
- Air Brakes with Automatic Slack Adjusters and ABS
- Daytime Running Lights
- Emergency Start Switch

FREIGHTLINER CHASSIS

	MODEL	35 DH	40 QDH	40 QSH	42 QRH
Caterpillar C7 Engine 350 HP / 860 lb Torque		S	S	S	NA
Cummins ISL 8.9-liter Engine 350 HP / 1050 lb. Torque		NA	NA	NA	S
GVWR		32,000	32,000	32,000	42,600
GAWR – Front		12,000	12,000	12,000	12,600
GAWR – Rear		20,000	20,000	20,000	20,000
GAWR – Tag Axle		NA	NA	NA	10,000
GCWR		42,000	42,000	42,000	52,600
Alternator Amps		160	160	160	160
Wheel Base		208	266	266	296
Exhaust Brake		S	S	S	NA
Engine Brake		NA	NA	NA	S
Tire Size		275 / 80R22.5	275 / 80R22.5	275 / 80R22.5	275 / 80R22.5
Trailer Hitch Capacity		10,000	10,000	10,000	10,000
Fuel Tank (Gallons) - Dual Fuel Fill		100	100	100	100
Aluminum Wheels		NA	NA	NA	S

OVERALL

	MODEL	35 DH	40 QDH	40 QSH	42 QRH
Overall Length – Approximately		35' 6"	40' 5"	40' 5"	42' 5"
Overall Height with Roof Air (Maximum)		12' 7"	12' 7"	12' 7"	12' 7"
Interior Height		84"	84"	84"	84"
Overall Width		101"	101"	101"	101"
Interior Width		96"	96"	96"	96"
Fresh Water (Gallons)		90	90	90	90
Black Water (Gallons)		45	45	45	45
Grey Water (Gallons)		70	70	70	70
LPG Tank (Gallons; can only be filled to 80% capacity)		35.7	35.7	35.7	35.7
Minimum Garage Height		13'	13'	13'	13'

STRUCTURAL

STANDARD EQUIPMENT ON ALL MODELS:

- Laminated Floor, Sidewall & Roof
- Steel / Aluminum Reinforced Structure
- One-Piece Fiberglass Roof

EXTERIOR

STANDARD EQUIPMENT ON ALL MODELS:

- Fiberglass Front & Rear Caps
- Dual Fuel Fills
- Large Tinted One Piece Windshield
- Heated Power Mirrors with Remote Adjustment
- Single Motor Intermittent Wiper
- Gel-Coat Fiberglass Walls
- Full Body Paint
- Deadbolt Front Entrance Door
- Double Electric Step
- Dual Pane Windows
- Exterior Patio Light
- Manual Door Awning
- Automatic Patio Awning
- Slideout Awnings
- Wheel Liners
- Custom Mud Flap
- Exterior Swing-Out Storage Doors with Gas Shocks
- Single Handle Lockable Storage Door Latches
- Lighted Exterior Storage
- Roof Ladder
- Docking Lights
- Heated Water and Holding Tank Compartments
- Four 6v Auxiliary Batteries
- Park Telephone Ready
- Black Tank Flush System
- Water Filter
- Undercoating
- 110v Exterior Receptacle
- 110v / 12v Converter
- TV Antenna
- Power Fantastic® Roof Vent with 3-Speed Fan
- A/C Condensation Drains
- Back-Up Camera
- Cable Ready TV
- 2000 Watt Inverter with 100 Amp Converter & Transfer Switching

	MODEL	35 DH	40 QDH	40 QSH	42 QRH
Spotlight		0	0	0	0
Automatic Door Awning		0	0	0	0
Window Awning Package (Two Windows)		0	0	0	0
Aluminum Wheels		0	0	0	0
Exterior Slide-Out Storage Tray		0	0	0	0
Hadley Air Horns		0	0	0	0
In-Motion Satellite Dish		0	0	0	0
Automatic Satellite Dish		0	0	0	0
Exterior 24" TV On Slide / Swivel Tray		0	0	0	0
Side Cameras Activated with Turn Signals		0	0	0	0
Chrome Mirrors		0	0	0	0
7.5kw Onan® Manual Slide-Out Generator		S	S	S	NA
10.0kw Onan® Manual Slide-Out Generator		NA	NA	NA	S
Atwood Electric Automatic Leveling Jacks		S	S	S	NA
HWH Hydraulic Jacks		0	0	0	S
Two 15,000 BTU Low Profile Roof A/C Systems with Heat Pump		S	S	S	NA
Three Low Profile Roof A/C Systems		NA	NA	NA	S

DRIVER'S COMPARTMENT

STANDARD EQUIPMENT ON ALL MODELS:

- Flexsteel® Ultra Leather Power Driver and Passenger Seats with Foot Rest
- Custom Infrared Repeater
- Dual Dash Fans
- Dual 12v Dash Receptacle
- Single CD Player AM/FM Stereo
- Side Shades - Driver/Passenger Cockpit
- Windshield Privacy Curtain
- Snack / Beverage Tray with Drawers
- Back-Up Color Monitor
- Fire Extinguisher
- Padded Dash
- Step Switch and 12v Disconnect Switch
- Power Sun Visors
- Computer Slide-Out Tray in Dash

DRIVER'S COMPARTMENT *continued*

	MODEL	35 DH	40 QDH	40 QSH	42 QRH
Sirius® Radio (Requires Subscription)		0	0	0	0
Computer Navigational System		0	0	0	0
32" Flat Screen Color TV		S	S	S	0

LIVING AREA/DINETTE

STANDARD EQUIPMENT ON ALL MODELS:

- Booth Dinette with Laminate Table Top and Solid Surface Edging

	MODEL	35 DH	40 QDH	40 QSH	42 QRH
Free Standing Dinette with Built-in Cabinets		0	0	0	0

PASSENGER'S SIDE

	MODEL	35 DH	40 QDH	40 QSH	42 QRH
Leather Euro Recliner with Folding Table		S	NA	NA	NA
74" Ultra Leather DE Sofa Bed		NA	S	S	S
74" Cloth DE Sofa Bed		NA	0	0	0
74" Ultra Leather Flex Air® Hide-a-Bed		NA	0	0	0
74" Cloth Flex Air® Hide-a-Bed		NA	0	0	0

DRIVER'S SIDE

	MODEL	35 DH	40 QDH	40 QSH	42 QRH
Cloth DE Sofa Bed		S	S	S	S
Ultra Leather DE Sofa Bed		0	0	0	0
Ultra Leather Magic Bed		0	0	0	0
Cloth Magic Bed		0	0	0	0
Leather Euro Recliner with Computer End Table		NA	0	0	0

KITCHEN

STANDARD EQUIPMENT ON ALL MODELS:

- Solid Surface Counter Top with Stainless Steel Sink
- Single Lever Sink Faucet with Sprayer
- 4-Door Refrigerator with Ice Maker
- 3-Burner Cooktop
- Solid Surface Sink and Stove Covers
- Convection / Microwave Oven
- Built-in Soap Dispenser

	MODEL	35 DH	40 QDH	40 QSH	42 QRH
Gas Oven		0	0	0	0
Expand-an-Island		NA	S	S	S

BATH

STANDARD EQUIPMENT ON ALL MODELS:

- Medicine Cabinet with Vanity Light
- Solid Surface Vanity Top & Bowl
- Glass Shower Surround
- 3-Speed Fantastic® Fan
- Skylight in Shower
- Custom Raised Panel Bath Door
- Glass Shower Door

	MODEL	35 DH	40 QDH	40 QSH	42 QRH
Fiberglass Molded Garden Tub		NA	NA	S	NA
Fiberglass Molded Shower		S	S	NA	S

BEDROOM

STANDARD EQUIPMENT ON ALL MODELS:

- Wardrobe
- Under Bed Storage
- 20" Color TV with DVD Player
- LPG Leak Detector
- Bed Comforter with Throw Pillows
- Pillow Top Mattress
- Carbon Monoxide Detector
- Chest of Drawers with Laundry Hamper

	MODEL	35 DH	40 QDH	40 QSH	42 QRH
King Bed Mattress		NA	0	0	0
Select Comfort (Dual Control) Bed System – Queen		0	0	0	0
Select Comfort (Dual Control) Bed System – King		NA	0	0	0

GENERAL INTERIOR

STANDARD EQUIPMENT ON ALL MODELS:

- 7' Ceilings
- Soft Touch Vinyl Ceiling
- Ceramic Tile Floor in Kitchen, Bath & Entry Landing
- Carpeting in Bedroom & Driver's Compartment with Scotchgard®
- Raised Panel Hardwood Cabinet Doors and Drawers
- Medium Alderwood Cabinetry
- Day / Night Pleated Shades
- 12v Fluorescent Lights
- Home Theatre Sound System with Concealed Speakers
- Fantastic® Power Roof Vents with 3 Speed Fans
- Tank Level Monitor System
- Smoke Detector
- 10-Gal Gas / Electric Water Heater
- Air Driven Step Well Cover

	MODEL	35 DH	40 QDH	40 QSH	42 QRH
Natural Maple Cabinetry (Simulated)		0	0	0	0
Cherry Bark Cabinetry (Simulated)		0	0	0	0
Full Tile in Living Room		0	0	0	0
Washer / Dryer		0	0	0	0
Stacked Washer / Dryer		NA	NA	NA	0
Central Vacuum Cleaner		0	0	0	0
One 42,000 BTU Ducted Furnace		S	NA	NA	NA
Two Ducted Furnaces (One 30,000 BTU and One 35,000 BTU)		NA	S	S	S

All options may not be available in all models. Because of progressive improvements, specifications, standard and optional equipment are subject to change without notice or obligation.