

ZEPHYR

2008

TIFFIN MOTORHOMES

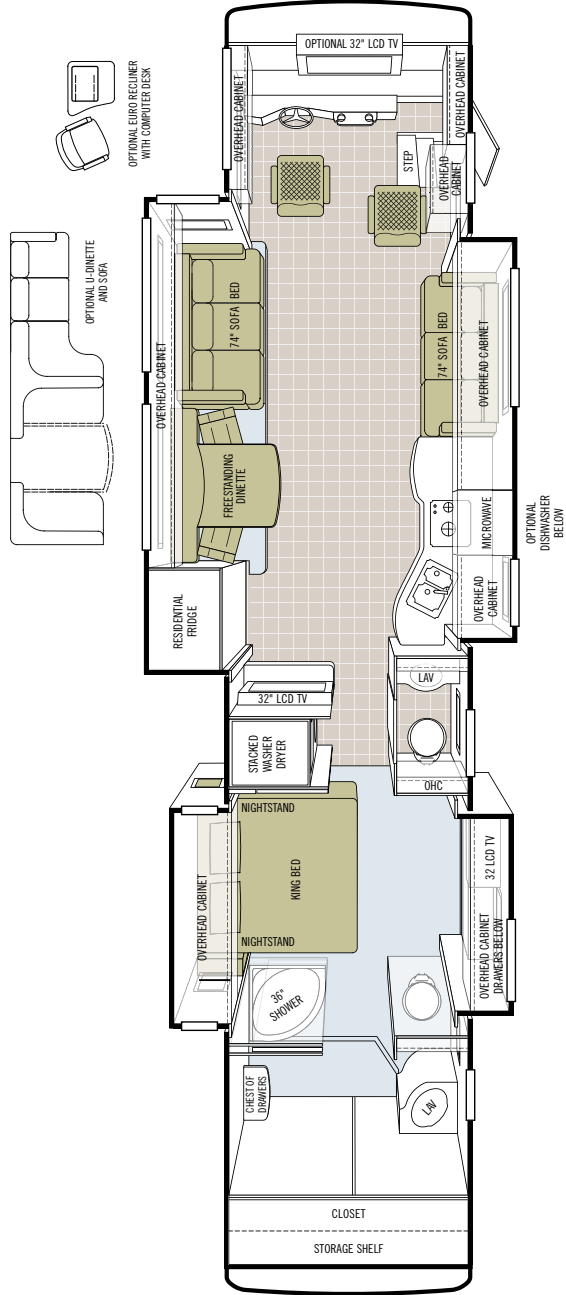
Zephyr



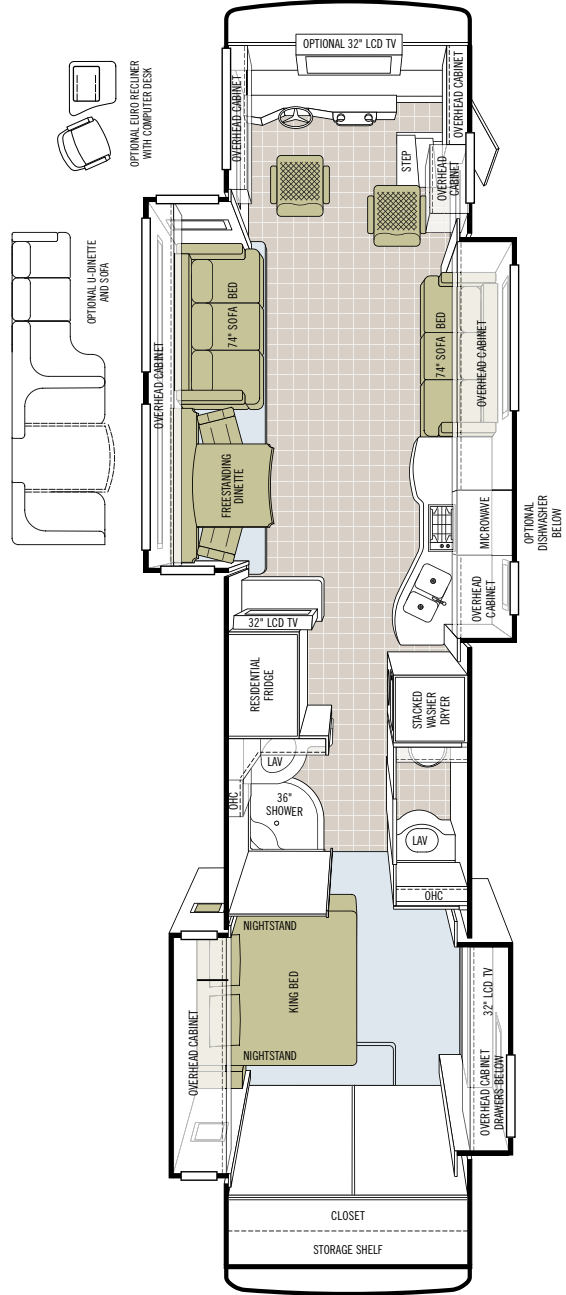
TIFFIN MOTORHOMES

WHEREVER YOU GO, WE GO.

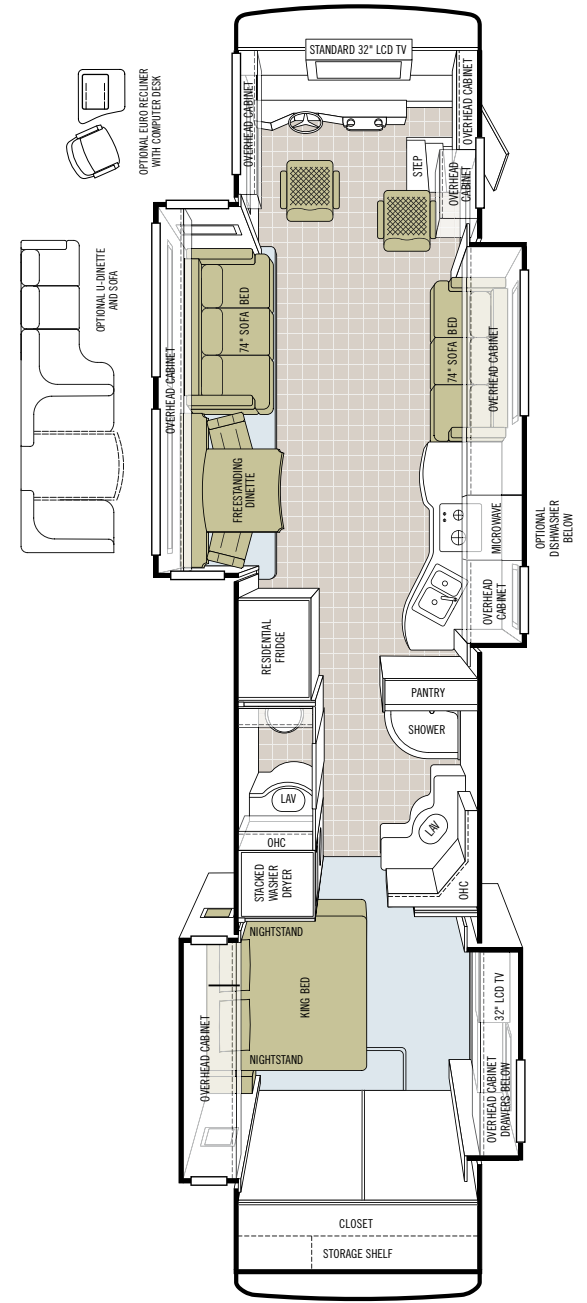
# FLOOR PLANS



**45 QBZ**  
AVAILABLE MARCH 2008



**45 QEZ**



**45 QSZ**

**CABINETS & FABRICS** (All cabinet doors are made of solid wood.)



Natural Cherry



Cherry Wood



Cherry Bark



Glazed Cherry

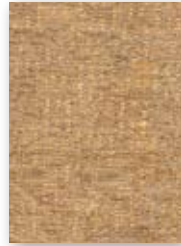
**SEVILLE**



Bedroom



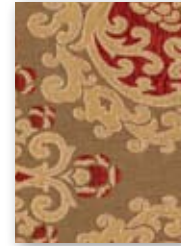
Bedroom Accent



Cloth Sofa



Living Area Accent



Dinette



Carpet

**VENETIAN**



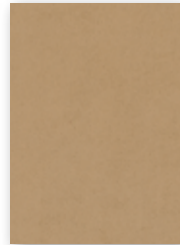
Bedroom



Bedroom Accent



Cloth Sofa



Living Area Accent



Dinette



Carpet

**EXTERIOR PAINT COLORS**



NASA



SILVER SAND



SUNLIT SAND

## TECHNICAL SPECS

### AUTOMOTIVE

#### STANDARD EQUIPMENT ON ALL MODELS:

- 500 HP @ 1,900-2,000 rpm Cummins ISM 10.8-liter Engine
- Spartan K2 Chassis - 500 HP
- 15,000 lb. Tow Hitch
- Tag Axle 10,000 lb.
- Allison 4000 MH Transmission
- Two-Stage Engine Brake
- Six Cast Aluminum Wheels
- Independent Front Suspension
- Hadley SLS - Automatic Air Leveling System
- Full Air Brakes
- VIP Smart Wheel

### STANDARD EQUIPMENT

Torque (Lb.-Ft. Max. Net)	1550 @ 1,300	UVW	38,340
GVWR	46,600	Fuel Tank (gallons)	150
GAWR-Front	16,600	Wheel Base	316" (292" From Front Axle to Drive Axle)
GAWR-Rear	20,000	Tire Size	295/80R22.5
TAG Axle	10,000	Alternator Amps	270
GCWR	61,600		

### OVERALL

Overall Length – Approximately	44' 9"	Fresh Water (Gallons)	90
Overall Height with Roof Air (Maximum)	12' 10"	Black Water (Gallons)	46
Interior Height	84"	Grey Water (Gallons)	70
Overall Width	101"	LPG Tank (Gallons; can only be filled to 80% capacity)	24.4
Interior Width	96"	Minimum Garage Height	13'
Basement Storage (Cubic Feet - Approximate)	167.5		

### STRUCTURAL

#### STANDARD EQUIPMENT ON ALL MODELS:

- Steel Cockpit Overhead Support Structure
- Seamless One-Piece Gel Coat Fiberglass Molded Roof Cap
- One-Piece Molded Gel Coat Fiberglass Front & Rear Caps with Integrated Air Intake
- Laminated Gel Coat Fiberglass Sidewalls
- Steel / Aluminum Laminated Side Walls, Floor & Roof
- 1/2" Laminated Floor Decking
- Insulated Roof Duct Laminated into Roof Construction
- Steel Basement Construction
- Insulated Steel Cage Engine Cover

### EXTERIOR

#### STANDARD EQUIPMENT ON ALL MODELS:

- One-Piece Fiberglass Gel Coat Front & Rear Fenders with Integrated Storage
- Fiberglass Gel Coat Engine Access Door with Swing-Out Hinges & Shocks
- One-Piece Aluminum Face Swing-Out Baggage Doors with Integrated Power Locks
- Pass-Through Full Basement
- Slide-Out Storage Tray (Slides Out Both Sides)
- 12,500 Onan® Generator
- Phone, 120 v & 12 v Outlets Inside Storage Compartment
- Auto Generator Start System
- Eight House Batteries
- One-Piece Pull-Out Generator Access Door
- Three Low Profile Roof Air Conditioners with Heat Pumps
- Two 125 Watt Solar Panels
- Easy Hook-Up Water Compartment with Built-in Hose Exits
- Multi-Port Manifold System for Hot & Cold Water Lines
- Fiberglass Water Service Center Panel & Compartment
- Hydraulic Heating System with Continuous Hot Water
- Water Pump Switch Located at Galley, Lavatories & Water Service Compartment
- In-Motion Low-Profile HD Satellite System (Requires HD Receiver)
- One-Piece Panoramic Windshield
- Black Tank & Grey Tank Flush System
- Water Filter
- Vented Fresh Water Tank for Portable Water Fill
- Power Garden Hose Reel
- Outside Shower
- Recessed Docking & Fog Lights
- Air Horns
- Basement & Outside Compartment Lights
- Porch Lights
- Lighted Exterior Grab Handle
- Deadbolt Entrance Door Lock
- Keyless Entry System (Includes Exterior Compartment Doors)
- Air Gliding Step Cover
- Heavy Duty Rear Hitch - 15,000 lb.
- Full Length "ZEPHYR" Mud Flap
- Rear View Mirror with Compass & O/S Thermometer
- TV Antenna
- Electric Power Cord Reel
- 32" Exterior LCD TV
- MCD Power Window Shades
- Power Driver's Window
- Carefree Paramount Awning (3 Positions)
- Diamond Shield® Front Cap Protective Coating
- Aerodynamic Streamlined Appearance

2nd Slide Out Tray

0

For more specifics on the Tiffin Zephyr Motorhome, go to [tiffinmotorhomes.com/zephyr](http://tiffinmotorhomes.com/zephyr)

## DRIVER'S COMPARTMENT

### STANDARD EQUIPMENT ON ALL MODELS:

- Ergonomic Wrap-Around Dash with Burl Wood Instrument Panels
- Back Light Lettering for Dash Controls
- Built-in Driver & Passenger Consoles with Controls
- Six-Way Power Driver & Passenger Seats including Passenger Power Footrest
- Integrated Driver & Passenger Seat Belts
- Storage Drawers with Built-in Beverage Tray
- Smart Wheel with Controls for ICC, Cruise & Windshield Wipers
- Adjustable Accelerator & Brake Pedals
- Power Steering
- Driver & Passenger Overhead Fans
- Sliding Dash Map Drawer
- Driver & Passenger Map Lights
- Power Driver Window
- Power Driver/Passenger Window Shades with Blackout Screen - Nighttime
- Full-Width Power Windshield Shades with Solar Shade - Daytime
- Dual 12 v Outlets in Dash Area (Driver)
- Phone Jack 12 v Outlet (Passenger)
- Color Rear Vision Monitor System with Side-View Cameras
- Compass with Outside Temperature
- CB Radio with Antenna
- Sirius® Radio (Requires Subscription)
- Cellular Phone Antenna
- In-Dash CD/AM/FM Radio
- Quick Power Disconnect
- Fire Extinguisher

#### 45 QBZ

#### 45 QEZ

#### 45 QSZ

32" LCD TV over Pantry

S

S

NA

32" LCD TV over Cockpit

0

0

S

Computer / Navigational System

0

0

0

## LIVING AREA/DINETTE

### STANDARD EQUIPMENT ON ALL MODELS:

- Freestanding Dinette with Built-in Storage Cabinets
- Fully Tiled Living Room
- Cloth Magic Sofa Bed on Driver Side
- Decorative Wall & Dinette Lighting Package
- Decorative Ceiling Panel
- Home Theater System with DVD Player
- Full-Length Mirror in Living Area
- Carbon Monoxide Detector

Sofa/Booth Dinette Combination on Driver's Side

0

Ultra Leather Euro Recliner with Computer/End Table on Driver Side

0

Cloth Magic Sofa Bed on Driver Side

0

Black-Glazed Entertainment Center

0

Ultra Leather Magic Sofa Bed on Driver Side

0

Ultra Leather Air-Coil Hide-A-Bed on Driver's Side

0

Cocoa-Glazed Entertainment Center (Only Available

Ultra Leather Magic Sofa Bed on Passenger Side

0

Cloth Air-Coil Hide-A-Bed on Driver's Side

0

with Natural Cherry or Cherry Wood Cabinetry)

0

Cloth Magic Sofa Bed on Passenger Side

0

## KITCHEN

### STANDARD EQUIPMENT ON ALL MODELS:

- Solid Surface Countertops
- Electric Residential Refrigerator with Eight House Batteries
- Recessed Princess Two-Burner Cook Top with Solid Surface Covers
- Integrated Solid Surface Galley Sink with Solid Surface Covers
- Natural Stone Splash Guards
- Pull-Out Hardwood Pantry with Solid Surface Cutting Board
- Ceramic Tile Splashguard with Decorative Inlays
- Convection Microwave with Stainless Front
- Mini Blinds & Hardwood Valance
- Built-in Soap Dispenser
- Fluorescent Galley Light
- Adjustable Shower Head on Slide Bar

Drawer Type Dishwasher

0

## BATH

### STANDARD EQUIPMENT ON ALL MODELS:

- Two Lavatories with Medicine Cabinets & Drawers
- Elongated Ceramic Toilet with Electric Flush
- Integrated Solid Surface Lavatory Sinks (Two Lavatories)
- Built-in Soap Dispenser at Lavatory
- Cosmetic Lights over Lavatories
- Solid Surface Shower Walls with Inlaid Tile
- Towel Holders, Robe Hook, & Lavatory Accessories Package
- Raised Panel Bath & Pocket Doors
- Curved Shower Enclosure Door
- Stacked Washer / Dryer

## BEDROOM

### STANDARD EQUIPMENT ON ALL MODELS:

- 32" LCD TV
- Select Comfort King Mattress with Nightstands
- Shirt Closet with Drawers
- Large Carpeted Storage Area beneath Bed
- Decorative Ceiling Panel
- Large Wardrobe Closet with Built-in Drawers & Sliding Hardwood/Mirror Doors
- Cedar-Lined Wardrobe
- LP Detector

## GENERAL INTERIOR

### STANDARD EQUIPMENT ON ALL MODELS:

- Wall Mounted Thermostats
- 12 v Attic Fans with Wall Mounted Controls
- Cable TV Hook-Up & Phone Jacks
- Solid Hardwood Arch/Raised Panel Doors
- Carpeted Cabinet Shelves
- Ball Bearing Drawer Slides
- In-Motion Digital Satellite Dish
- Wallpaper Covering on Sidewalls
- Padded Soft Touch Vinyl Ceiling
- Day/Night Pleated Shades with Decorative Valances
- High-Gloss Tile Flooring
- Built-in Speakers with Matching Hardwood Louvers
- 3000 Watt Sine Wave Inverter
- Ceiling Flush Mounted Multi-Lighting System
- Wall Mounted Switches for Lights & Accessories
- Rope Lights Beneath Galley & Bedroom Vanity Area
- Rope Lights in Window Valances
- 50-Amp Distribution with Surge Protection
- 12 v Fuse Panel
- Ducted Return Air Conditioning System
- Battery Disconnect Switch
- Smoke Alarm
- GFI Outlets at Galley & Lavatories
- Lighted Interior Grab Handle
- Complete HD Ready Entertainment System (HD Satellite Receivers Required)
- Complete Cable Wiring Interfacing with Surround Sound & Satellite Receiver

Natural Cherry Cabinetry (Light)

0

Cherry Wood Cabinetry

0

Cherry Bark Cabinetry (Dark)

0

Glazed Cherry Cabinetry

0

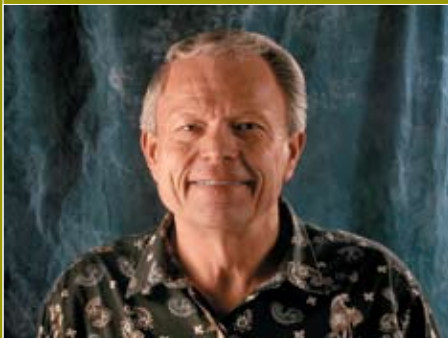
# LET YOUR JOURNEY BEGIN.

Where you go from here is entirely up to you. And when you go, you bring the best warranty and service plan in the motorhome industry along for the ride. For more than 30 years, we've been building quality products for a family of customers who share our love for travel by motorhome. The places they've seen and the experiences they've collected are immeasurable. We're proud to have been a part of their lives. They are the reason that every day, we do everything we can to strengthen the relationship we enjoy with our customers and the relationship they enjoy with the road.

## WARRANTIES THAT GO WHEREVER YOU GO

**10-YEAR UNITIZED CONSTRUCTION LIMITED WARRANTY** The structural integrity of the entire coach is guaranteed for the next 10 years. Warranty includes wall separation and inner frame weakness.

**5-YEAR "HYDRA-VAC" LAMINATION LIMITED WARRANTY** We guarantee against all exterior fiberglass delamination or wall separation.



Start your journey by visiting our website. We'd love to hear from you, so give us a call, send us a post card or stop by our office the next time you pass by Red Bay. Because remember, wherever you go, we go.

Sincerely,

A handwritten signature in white ink that reads "Bob Tiffin". The signature is fluid and cursive, with a long, sweeping underline.

TIFFIN MOTORHOMES, INC. 105 2ND STREET NW RED BAY, AL 35582  
CALL 256.356.8661 FAX 256.356.8219  
FOR PARTS AND SERVICE CALL 256.356.0261  
[www.tiffinmotorhomes.com](http://www.tiffinmotorhomes.com)

The following names are registered trademarks of Tiffin Motorhomes: Open Road®, Phaeton®, Allegro®, Allegro Bay®, Allegro Bus®, Zephyr®, Roughing It Smoothly®, and Pusher®.