



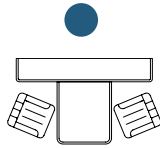
TIFFIN MOTORHOMES

THE 2009 *Allegro Bay*

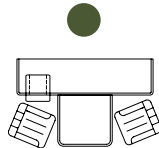
SPECIFICATIONS

FLOOR PLANS

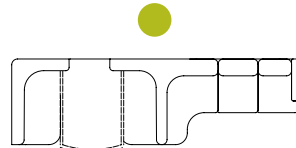
OPTION KEY



FREESTANDING CABINET/DINETTE

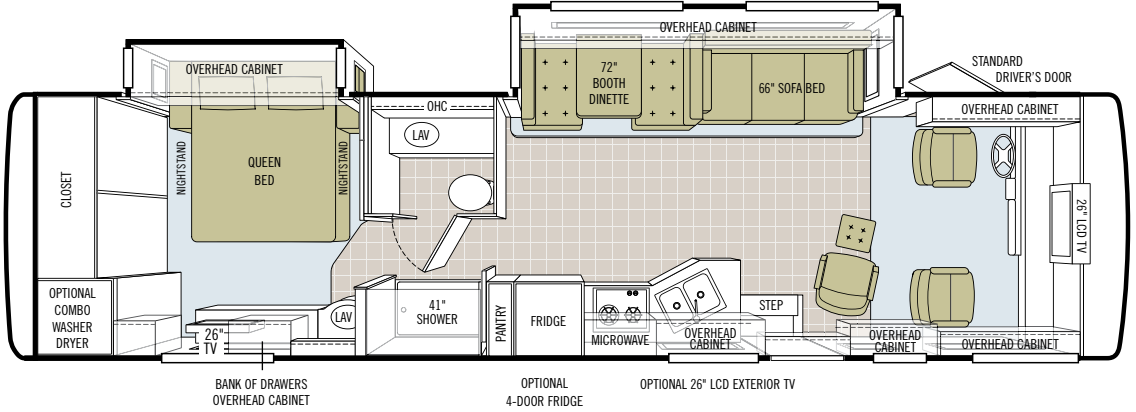


FREESTANDING DINETTE WITH COMPUTER WORKSTATION
(Available after August 1, 2008)

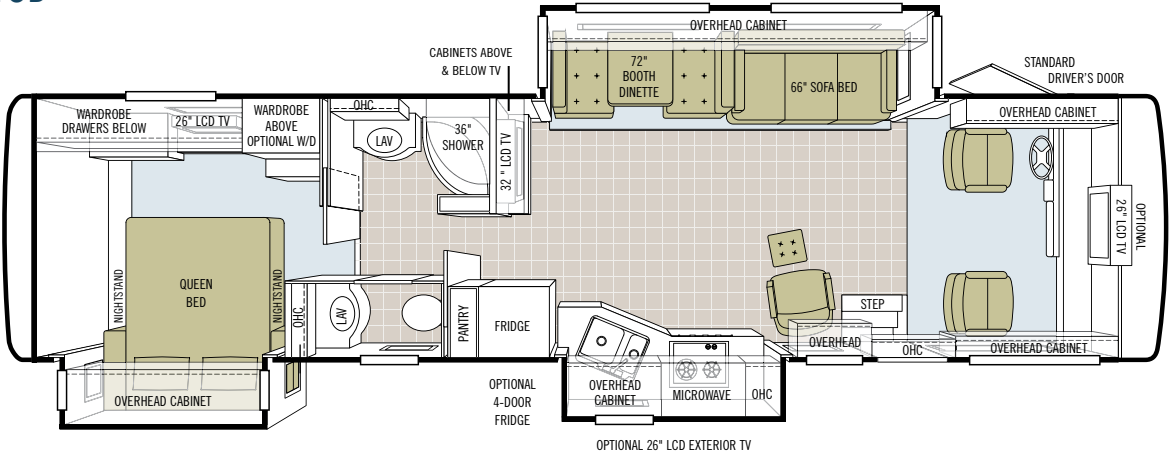


ULTRA LEATHER U-SHAPED DINETTE & SLEEPER SOFA

34 XB

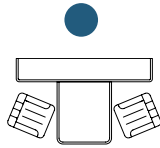


35 TSB

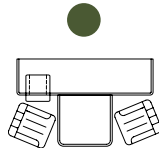


FLOOR PLANS

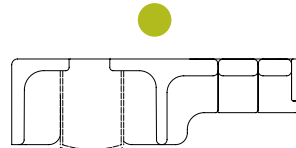
OPTION KEY



FREESTANDING CABINET/DINETTE

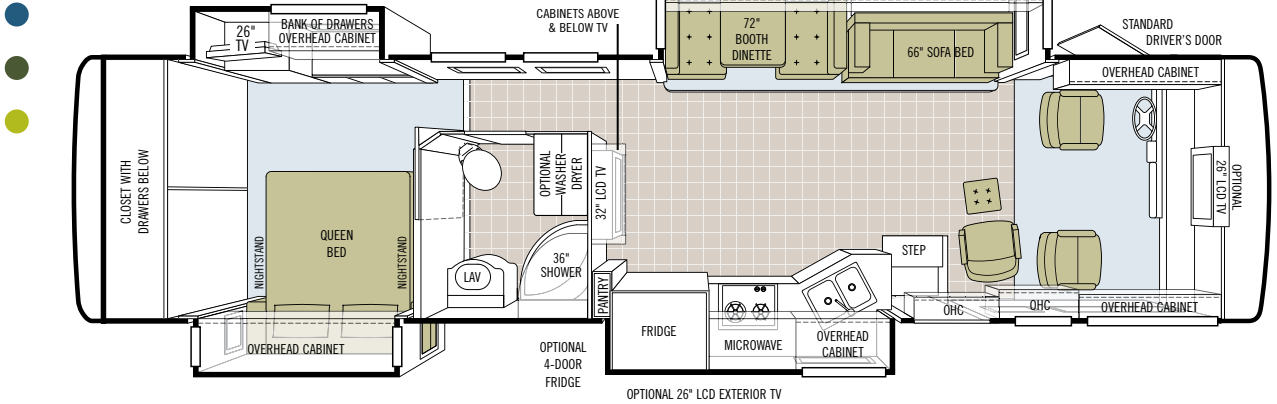


FREESTANDING DINETTE WITH COMPUTER WORKSTATION
(Available after August 1, 2008)

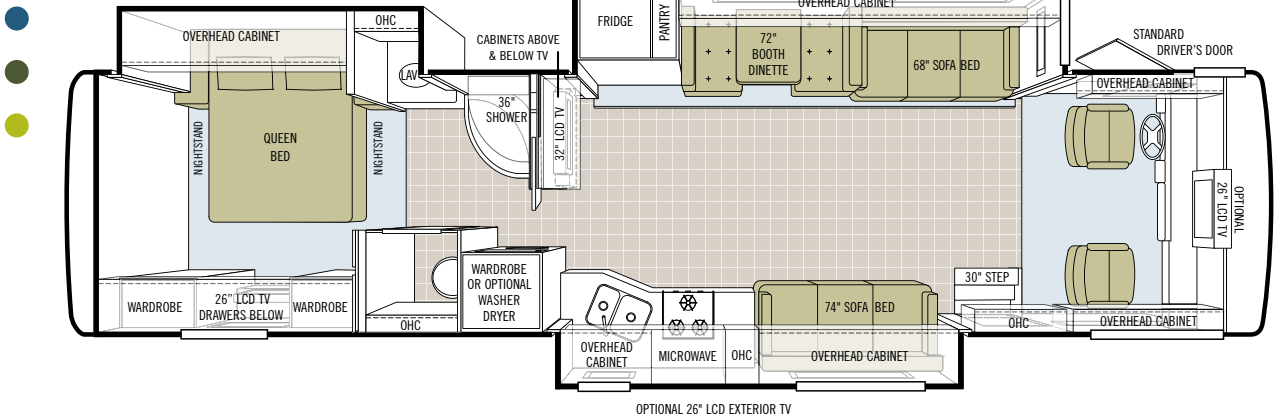


ULTRA LEATHER U-SHAPED DINETTE & SLEEPER SOFA

37 QDB



38 TGB





SILVER SAND



MOCHA SILVER SAND



SUNLIT SAND



MOCHA SUNLIT SAND

Note: Mocha is similar in hue to Standard Black, but offers more of a warm chocolate tone.

FULL BODY PAINT COLORS



GOLD CORAL



MOCHA GOLD CORAL



MAROON CORAL



MOCHA MAROON CORAL



NASA

INTERIOR SPECIFICATIONS

CABINETS & FABRICS

All cabinet doors are made of solid wood.



Natural Maple



Cherry Bark



Medium Alderwood



Carpet

CRYSTAL COVE



Bedroom



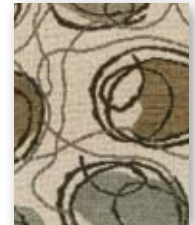
Bedroom Accent



Sofa/Chair



Living Area Accent



Dinette

JAVA



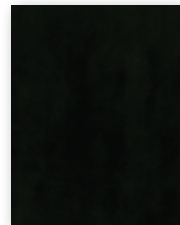
Bedroom



Bedroom Accent



Sofa/Chair



Living Area Accent



Dinette

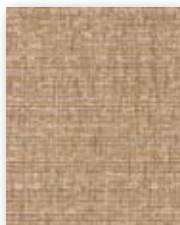
PEWTER



Bedroom



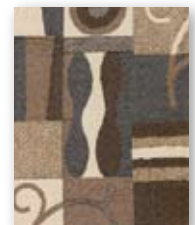
Bedroom Accent



Sofa/Chair



Living Area Accent



Dinette

All cabinet finishes are available in combination with all fabric schemes.

TECHNICAL SPECIFICATIONS

AUTOMOTIVE

STANDARD EQUIPMENT ON ALL MODELS:

- Emergency Start
- Cruise Control

FREIGHTLINER FRONT ENGINE DIESEL	34 XB - 26,000	35 TSB - 26,000	37 QDB - 26,000	38 TGB - 26,000	WORKHORSE CHASSIS	34 XB - 22,000
Engine - 340 HP	Cummins ISB	Cummins ISB	Cummins ISB	Cummins ISB	Engine - 340 HP	8.1 L V8
Torque (Lb.-Ft. Max. Net)	620 @ 1600	620 @ 1600	620 @ 1600	620 @ 1600	Torque (Lb.-Ft. Max. Net)	455 @ 3200
GVWR	26,000	26,000	26,000	26,000	GVWR	22,000
GAWR - Front	10,000	10,000	10,000	10,000	GAWR - Front	8,000
GAWR - Rear	17,000	17,000	17,000	17,000	GAWR - Rear	14,500
GCWR	30,000	30,000	30,000	30,000	GCWR	26,000
Trailer Hitch Capacity (Pounds)	5,000	5,000	5,000	5,000	Trailer Hitch Capacity (Pounds)	5,000
Wheel Base	228	254	254	254	Wheel Base	228
Tire Size	255/70R 22.5	255/70R 22.5	255/70R 22.5	255/70R 22.5	Tire Size	235/80R 22.5
Fuel Tank (Gallons)	80	80	80	80	Aluminum Wheels	S
Alternator Amps	160	160	160	160	Fuel Tank (Gallons)	75
Allison 2100 MH	S	S	S	S	Alternator Amps	145
					Allison Automatic Transmission	S

OVERALL

	34 XB	35 TSB	37 QDB	38 TGB
Overall Length - Approximately	35' 5"	36' 6"	38' 3"	38' 10"
Overall Height with Roof Air (Maximum)	12' 7"	12' 7"	12' 7"	12' 7"
Interior Height	83.5"	83.5"	83.5"	83.5"
Overall Width	101"	101"	101"	101"
Interior Width	96"	96"	96"	96"
Fresh Water (Gallons)	75	75	75	75
Black Water (Gallons)	45	45	45	45
Grey Water (Gallons)	52	66	52	66
LPG Tank (Gallons; can only be filled to 80% capacity)	31.3	31.3	31.3	31.3
Minimum Garage Height	13'	13'	13'	13'
Basement Storage (Cubic Feet - Approximate)	95	86	82	82

STRUCTURAL

STANDARD EQUIPMENT ON ALL MODELS:

- One-piece Moisture Resistant Molded Fiberglass Roof Cap
- Laminated Floor, Sidewall & Roof
- Steel / Aluminum Reinforced Structure

EXTERIOR

STANDARD EQUIPMENT ON ALL MODELS:

- Fiberglass Front & Rear Caps
- Large One-piece Tinted Windshield
- Atwood Automatic Electric Jacks
- 7.0 kw Onan® Generator on Gasoline Chassis
- 6.0 kw Onan® Diesel Generator on FRED Chassis
- Single Motor Intermittent Wiper
- Chrome, Heated Power Mirrors with Remote Adjustment
- Side-view Cameras Activated by Turn Signals
- Entrance Door with Screen Door & Deadbolt
- Convenient Access Doors with Gas Shocks
- 1/4" Single Pane Windows
- Exterior Patio Light
- Automatic Patio Awning
- Slide-out Covers
- Wheel Liners
- Double Electric Step
- Single Handle Lockable Storage Door Latches
- Ridged Long-life Storage Boxes
- Luggage Compartment Lights
- Gel-coat Fiberglass Exterior
- Heated Water & Holding Tank Compartment
- Two 6 V Auxiliary Batteries
- 50-amp Service
- Park Telephone Ready
- Cable Ready TV
- Black Holding Tank Flush System
- Exterior Rinse Hose / Shower
- 110 V Exterior Receptacle
- 110 V / 12 V Converter (55-amp)
- Undercoating
- Driver's Door with Power Window
- Digital / Analog Stationary TV Antenna
- CB Antenna
- Power Fantastic® Roof Vent with 3-speed Fan
- Two 13,500 BTU Roof Air Conditioners
- Roof Ladder
- Back-up Camera
- Water Filter
- 10-gallon Gas / Electric Water Heater
- A/C Condensation Drains
- Full Body Paint

AVAILABLE OPTIONS:

	34 XB	35 TSB	37 QDB	38 TGB
Dual Pane Windows (Does not include entrance door)	○	○	○	○
Automatic Satellite Dish	○	○	○	○
Two 15,000 BTU Roof Air Conditioners with Heat Pump	○	○	○	○
Exterior 26" LCD TV	○	○	○	○

All options may not be available in all models. Because of progressive improvements, specifications, standard & optional equipment are subject to change without notice or obligation.

AUTOMOTIVE

CONTINUED

WORKHORSE CHASSIS CONT.

35 TSB - 24,000	FORD CHASSIS	34 XB - 22,000	35 TSB - 24,000	37 QDB - 26,000	38 TGB - 26,000
8.1 L V8	Engine - 362 HP	6.8L Triton V10	6.8L Triton V10	6.8L Triton V10	6.8L Triton V10
455 @ 3200	Torque (Lb.-Ft. Max. Net)	457@3250	457@3250	457@3250	457@3250
24,000	GVWR	22,000	24,000	26,000	26,000
9,000	GAWR - Front	7,500	9,000	9,000	9,000
15,500	GAWR - Rear	14,500	15,500	17,500	17,500
30,000	GCWR	26,000	30,000	30,000	30,000
5,000	Trailer Hitch Capacity (Pounds)	5,000	5,000	5,000	5,000
254	Wheel Base	228	254	254	254
235/80R 22.5	Tire Size	245/70R 22.5	245/70R 22.5	245/70R 22.5	245/70R 22.5
S	Fuel Tank (Gallons)	75	75	75	75
75	Alternator Amps	130	130	130	130
145	Aluminum Wheels	S	S	S	S
S	5-speed Automatic with Overdrive	S	S	S	S

DRIVER'S COMPARTMENT

STANDARD EQUIPMENT ON ALL MODELS:

- Entryway Floor Light
- Snack/Beverage Tray
- Single CD Player & AM/FM Stereo
- 12 V Dash Receptacle
- Tilt Steering Wheel
- Dual Dash Fans
- Color Back-up Monitor
- Fire Extinguisher
- Powered Windshield Solar/Privacy Shades
- Driver/Passenger Side Window Solar/Privacy Shades
- Non-powered Cloth Passenger & Driver Seats (Flexsteel®)
- 110 V Receptacle
- Phone/Madam Receptacle

AVAILABLE OPTIONS:

	34 XB	35 TSB	37 QDB	38 TGB
Powered Ultra Leather Passenger/Driver Seat (Flexsteel®)	○	○	○	○
1800 Watt Inverter	○	○	○	○
Satellite Radio (Requires Subscription)	○	○	○	○
Front Overhead 26" LCD TV	S	○	○	○
In-dash Stereo/GPS	○	○	○	○

LIVING AREA/DINETTE

STANDARD EQUIPMENT ON ALL MODELS:

- Cloth Air Coil® Hide-a-bed (Driver's Side)
- Booth Dinette
- Carbon Monoxide Detector

AVAILABLE OPTIONS:

	34 XB	35 TSB	37 QDB	38 TGB
Ultra Leather Air Coil® Hide-a-bed (Driver's Side)	○	○	○	○
Ultra Leather DE Sofa Bed (Passenger's Side)	NA	NA	NA	S
Ultra Leather Magic Bed (Driver's Side)	○	○	○	○
Cloth Magic Bed (Driver's Side)	○	○	○	○
Cloth DE Sofa Bed (Passenger's Side)	NA	NA	NA	○
32" LCD TV (Mid-section)	NA	S	S	S
Ultra Leather Euro Recliner	S	S	S	NA
Freestanding Dinette with Shelf & Cabinets	○	○	○	○
Ultra Leather U-shaped Dinette / Sleeper Sofa	NA	○	○	○
Freestanding Dinette with Computer Workstation*	○	○	○	○

KITCHEN

STANDARD EQUIPMENT ON ALL MODELS:

- Solid Surface Sink Covers
- Solid Surface Countertops & Backsplash
- Single Lever Sink Faucet with Pullout Sprayer
- Solid Wood Kitchen Table
- 2-burner Cooktop
- 8 Cubic Foot Stainless Steel Refrigerator
- Stainless Steel Double Bowl Kitchen Sink
- Stainless Steel Convection Microwave with Exterior Venting
- Full Extension Ball Bearing Drawer Slides

AVAILABLE OPTIONS:

	34 XB	35 TSB	37 QDB	38 TGB
3-burner Cooktop with Oven	○	○	○	○
4-door Stainless Steel Refrigerator with Ice Maker	○	○	○	○

* Available after August 1, 2008

BATH

STANDARD EQUIPMENT ON ALL MODELS:

- Medicine Cabinet
- Fantastic® Fan - Water Closet
- Solid Surface Countertops
- Single Lever Faucet
- Skylight in Shower with Sliding Cover
- China Toilet
- Glass Shower Door
- Solid Surface Sink Bowls
- Water Pump Switch
- Built-in Soap Dispenser

AVAILABLE OPTIONS:	34 XB	35 TSB	37 QDB	38 TGB
Vanity Light	NA	S	S	S
41" Molded Fiberglass Shower Surround	S	NA	NA	NA
36" Molded Fiberglass Shower with Radius Door	NA	S	S	S

BEDROOM

STANDARD EQUIPMENT ON ALL MODELS:

- Bed Comforter with Throw Pillows
- Innerspring Queen Mattress
- Wall-to-wall Carpeting
- Nightstands with 110 V Receptacles
- Solid Wood Vanity with Storage
- Automatic Light in Wardrobe
- 26" LCD TV
- Ceiling Fan
- LPG Leak Detector
- Laundry Hamper

AVAILABLE OPTIONS:	34 XB	35 TSB	37 QDB	38 TGB
Select Comfort (Dual Control) Bed System - Queen	○	○	○	○
Memory Foam Mattress - Queen	○	○	○	○

GENERAL INTERIOR

STANDARD EQUIPMENT ON ALL MODELS:

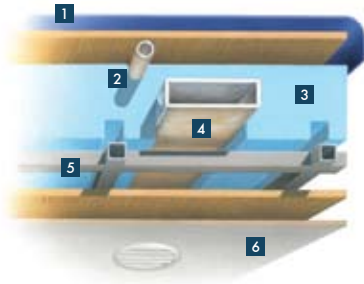
- Soft Touch Vinyl Ceilings
- Raised Panel, Solid Hardwood Cabinet Doors
- Full Extension Drawer Slides
- 7" Ceilings
- Medium Alderwood Cabinetry
- Vinyl Full-tile Flooring
- 12 V Disconnect switch
- Scotchgard® Treated Carpet & Fabrics
- Solar & Blackout RollEase® Shades
- Tank Level Monitor System
- Smoke Detector
- Home Theatre Surround Sound System with Concealed Speakers

AVAILABLE OPTIONS:	34 XB	35 TSB	37 QDB	38 TGB
Natural Maple Cabinetry (Simulated)	○	○	○	○
Cherry Bark Cabinetry (Simulated)	○	○	○	○
Combo Washer / Dryer	○	○	○	○
Stacked Washer / Dryer	NA	NA	NA	○
Central Vacuum Cleaner	○	○	○	○
One 30,000 & One 20,000 BTU Ducted Furnace	S	NA	NA	NA
Two 30,000 BTU Ducted Furnaces	NA	S	S	S



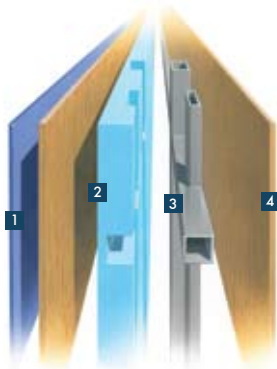
The chassis pictured above was developed by Freightliner Custom Chassis Corporation to offer the long-term dependability of diesel power, along with fuel economy and a high resale value. It features a quiet Cummins ISB engine and an Allison 2100 MH transmission with overdrive for the 34- to 38-ft. models. With a moderate price tag, we think you'll find FRED is a friend indeed.

CONSTRUCTION SPECIFICATIONS



ROOF

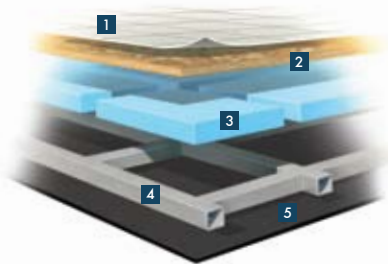
1. One-piece, moisture resistant molded fiberglass roof cap provides insulation and strength and prevents water intrusion
2. A/C Condensation Drainage System that runs internally through the roof insulation and down the sidewalls, redirecting water underneath the motorhome
3. 5 1/2" high-performance thermal insulation
4. Quiet Air Cooling System with return air and cooling exhaust ducts foil-wrapped to deflect UV rays and repel heat
5. Durable, tubular steel roof skeleton
6. Easy-to-clean soft touch vinyl ceiling panel



SIDEWALL

1. Gel-coat fiberglass outside wall panel
2. High-performance thermal insulation
3. Durable, yet lightweight, tubular aluminum wall skeleton
4. Decorative inside wall panel

All sidewalls are approximately 2" thick.



FLOOR

1. Tile flooring bonded to high-impact oriented strand board
2. High-level engineered oriented strand board
3. High-performance thermal insulation
4. Durable, tubular steel floor skeleton
5. Woven moisture barrier material

10-YEAR LIMITED UNITIZED CONSTRUCTION WARRANTY The structural integrity of the entire coach is guaranteed for the next 10 years. Warranty includes wall separation and inner frame weakness.

5-YEAR LIMITED LAMINATION WARRANTY We guarantee against all exterior fiberglass delamination or wall separation.

TIFFIN MOTORHOMES, INC. 105 2ND STREET NW RED BAY, AL 35582
CALL 256.356.8661 FAX 256.356.8219
FOR PARTS AND SERVICE CALL 256.356.0261

For more specifics on what makes a Tiffin Motorhome, go to tiffinmotorhomes.com

The following names are registered trademarks of Tiffin Motorhomes: Open Road®, Phaeton®, Allegro®, Allegro Bay®, Allegro Bus®, Zephyr®, Roughing It Smoothly®, and Pusher®.