



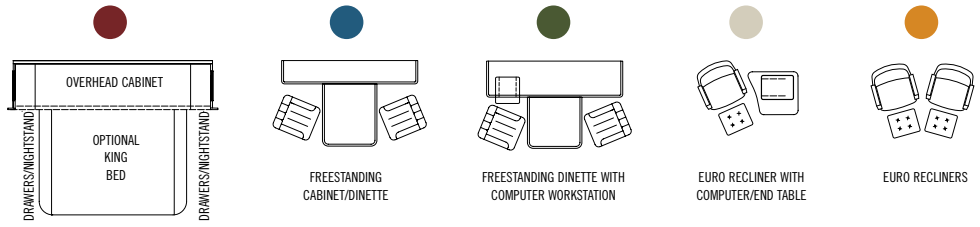
TIFFIN MOTORHOMES

THE 2009 *Phaeton*

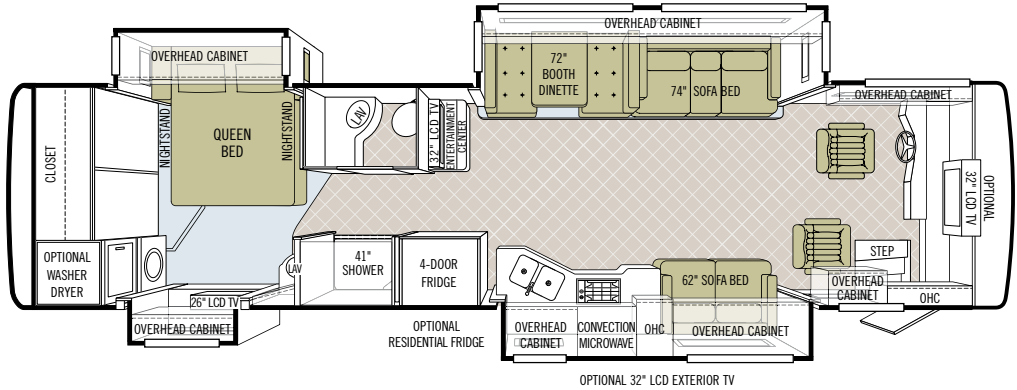
SPECIFICATIONS

FLOOR PLANS

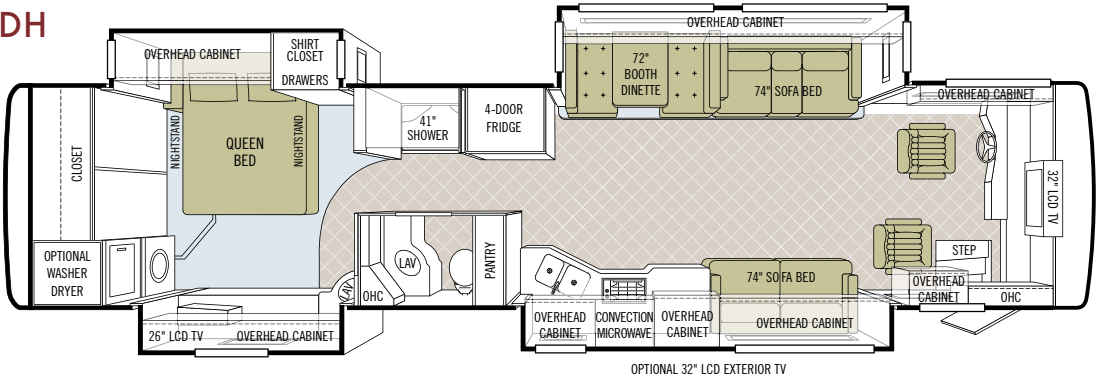
OPTION KEY



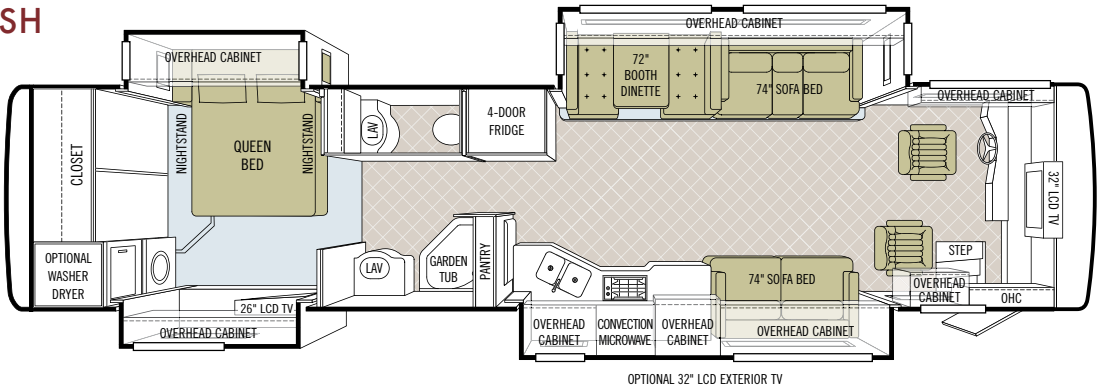
36 QSH



40 QDH

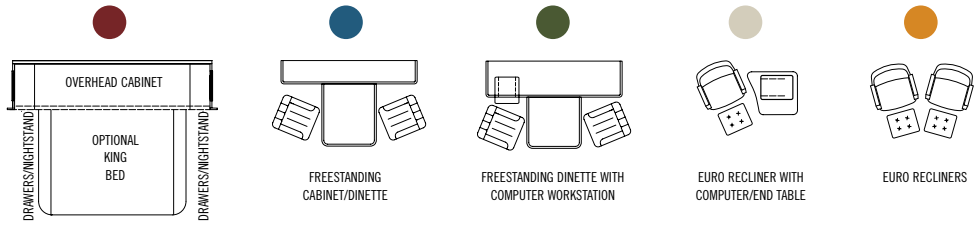


40 QSH

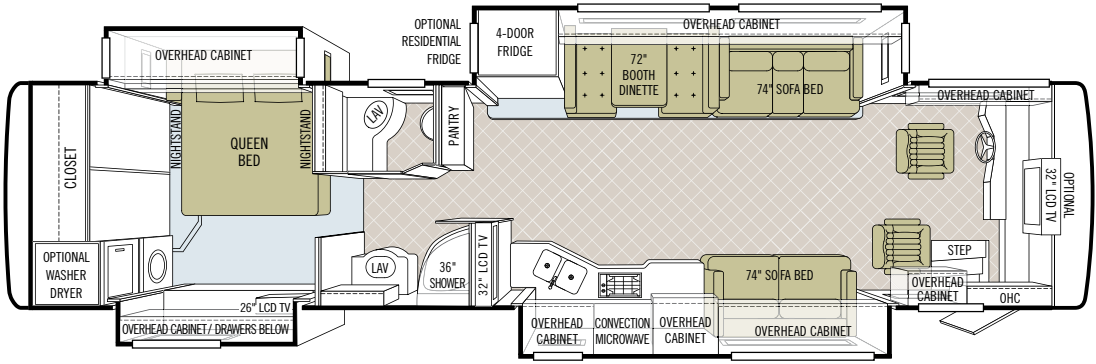


FLOOR PLANS

OPTION KEY

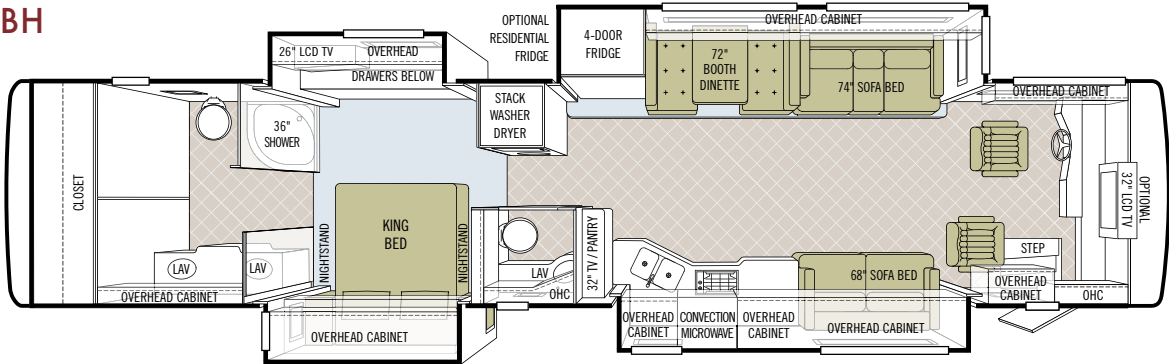


40 QTH



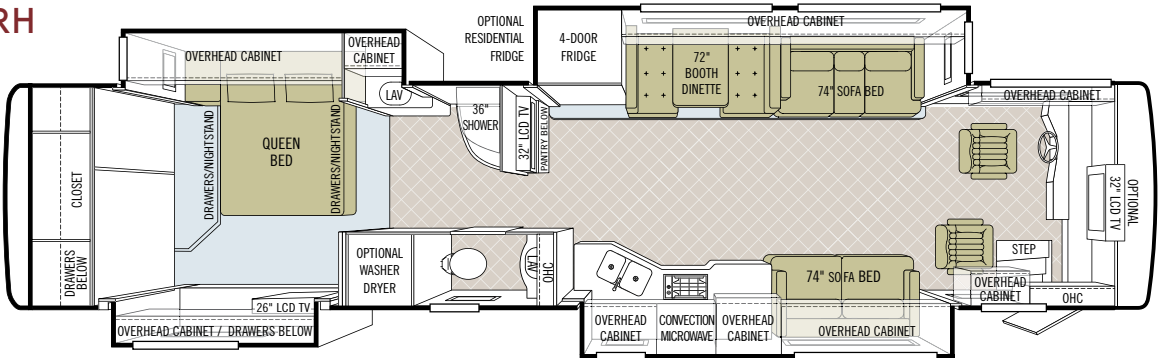
OPTIONAL 32\"/>

42 QBH



OPTIONAL 32\"/>

42 QRH



OPTIONAL 32\"/>



SILVER SAND



MOCHA SILVER SAND



SUNLIT SAND



MOCHA SUNLIT SAND

Note: Mocha is similar in hue to Standard Black, but offers more of a warm chocolate tone.

FULL BODY PAINT COLORS



GOLD CORAL



MOCHA GOLD CORAL



MAROON CORAL



MOCHA MAROON CORAL



NASA

INTERIOR SPECIFICATIONS

CABINETS & FABRICS

All cabinet doors are made of solid wood.



Natural Maple



Cherry Bark



Medium Alderwood

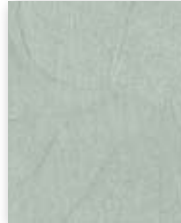


Carpet

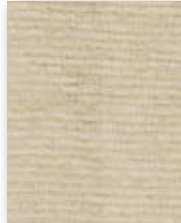
ATLANTIC



Bedroom



Bedroom Accent



Sofa/Chair



Living Area Accent



Dinette

CHATEAU



Bedroom



Bedroom Accent



Sofa/Chair



FS Dinette

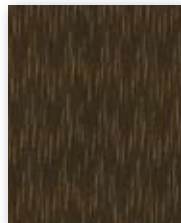


Booth Dinette

MONTECITO



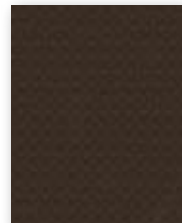
Bedroom



Bedroom Accent



Sofa/Chair



Living Area Accent



Dinette

All cabinet finishes are available in combination with all fabric schemes.

TECHNICAL SPECIFICATIONS

AUTOMOTIVE

STANDARD EQUIPMENT ON ALL MODELS:

- Raised Rail Chassis Frame
- Air Ride (4 Air Bags)
- Aluminum Wheels
- Exhaust Brake
- Adjustable Accelerator & Brake Pedals
- Allison 3000 MH 6-speed Automatic Transmission with Lock-up
- Air Brakes with Automatic Slack Adjusters & ABS
- 55" Wheel Cut
- Fog Lights
- Daytime Running Lights
- VIP 18" Steering Wheel
- Cruise Control
- Emergency Start Switch

CHASSIS	36 QSH	40 QDH	40 QSH	40 QTH	42 QBH	42 QRH
Freightliner Cummins ISC 360 HP/1050 lb. Torque	S	S	S	S	O	O
Spartan Cummins ISC 8.3-liter Engine 360 HP/1050 lb. Torque	NA	NA	NA	NA	O	O
GVWR	32,000	32,000	32,000	32,000	42,600	42,600
GAWR - Front	12,000	12,000	12,000	12,000	12,600	12,600
GAWR - Rear	20,000	20,000	20,000	20,000	20,000	20,000
GAWR - Tag Axle	NA	NA	NA	NA	10,000	10,000
GCWR	42,000	42,000	42,000	42,000	52,600	52,600
Alternator Amps	170	170	170	170	160	160
Wheel Base	228	266	266	266	296	296
Tire Size	275/80R22.5	275/80R22.5	275/80R22.5	275/80R22.5	275/80R22.5	275/80R22.5
Trailer Hitch Capacity (Pounds)	10,000	10,000	10,000	10,000	10,000	10,000
Fuel Tank (Gallons) - Dual Fuel Fill	100	100	100	100	100	100

OVERALL

	36 QSH	40 QDH	40 QSH	40 QTH	42 QBH	42 QRH
Overall Length - Approximately	36' 9"	40' 5"	40' 5"	40' 5"	42' 6"	42' 5"
Overall Height with Roof Air (Maximum)	12' 7"	12' 7"	12' 7"	12' 7"	12' 7"	12' 7"
Interior Height	84"	84"	84"	84"	84"	84"
Overall Width	101"	101"	101"	101"	101"	101"
Interior Width	96"	96"	96"	96"	96"	96"
Fresh Water (Gallons)	90	90	90	90	90	90
Black Water (Gallons)	45	45	45	45	50	45
Grey Water (Gallons)	70	70	70	70	66	70
LPG Tank (Gallons; can only be filled to 80% capacity)	35.7	35.7	35.7	35.7	35.7	35.7
Minimum Garage Height	13'	13'	13'	13'	13'	13'

STRUCTURAL

STANDARD EQUIPMENT ON ALL MODELS:

- Laminated Floor, Sidewall & Roof
- Steel / Aluminum Reinforced Structure
- One-piece Molded Fiberglass Roof Cap

EXTERIOR

STANDARD EQUIPMENT ON ALL MODELS:

- Fiberglass Front & Rear Caps
- Atwood Electric Automatic Leveling Jacks
- Large Tinted One-piece Windshield
- Chrome Heated Power Mirrors with Remote Adjustment
- Single Motor Intermittent Wiper
- Gel-coat Fiberglass Walls
- Remote Locking System for Entry Door
- Single Handle Lockable Storage Door Latches
- Exterior Swing-out Storage Doors with Gas Shocks
- Window Awning Package (2 Windows)
- Deadbolt Front Entrance Door
- Double Electric Step
- Dual Pane Windows
- Exterior Patio Light
- Automatic Door Awning
- Automatic Patio Awning
- Slide-out Covers
- Lighted Exterior Storage
- Full Body Paint
- Roof Ladder
- Docking Lights
- Heated Water & Holding Tank Compartments
- Four 6 V Auxiliary Batteries
- Park Telephone Ready
- Black Tank Flush System
- Water Filter
- Wheel Liners
- Custom Mud Flap
- Undercoating
- Dual Fuel Fills
- 110 V Exterior Receptacle
- Analog / Digital TV Antenna
- Power Fantastic® Roof Vent with 3-speed Fan
- A/C Condensation Drains
- Back-up Camera
- Cable Ready TV
- 2000 Watt Inverter with 100-amp Converter & Transfer Switching

EXTERIOR CONTINUED

AVAILABLE OPTIONS:	36 QSH	40 QDH	40 QSH	40 QTH	42 QBH	42 QRH
Spotlight	O	O	O	O	O	O
One Storage Compartment Slide-out Tray	O	O	O	O	O	O
Two Storage Compartment Slide-out Trays	NA	O	O	O	O	O
Hadley Air Horns	O	O	O	O	O	O
In-motion Satellite Dish	O	O	O	O	O	O
Automatic Satellite Dish	O	O	O	O	O	O
Exterior 32" LCD TV	O	O	O	O	O	O
8.0 kw Onan® Manual Slide-out Generator	S	S	S	S	NA	NA
Two 15,000 BTU Low Profile Roof Air Conditioners with Heat Pump	S	S	S	S	NA	NA
Three Low Profile Roof Air Conditioners with Heat Pump & 10.0 kw Onan® Generator	NA	O	O	O	S	S
HWH Hydraulic Jacks	O	O	O	O	O	O

DRIVER'S COMPARTMENT

STANDARD EQUIPMENT ON ALL MODELS:

- Flexsteel® Ultra Leather Power Driver & Passenger Seats with Foot Rest
- Padded Dash
- Custom Infrared Repeater System on all TVs
- Dual Dash Fans
- Snack / Beverage Tray with Drawers
- Dual 12 V Dash Receptacle
- Single CD Player & AM / FM Stereo
- Color Rear Vision Monitor System with Side-view Cameras
- Side-view Cameras Activated by Turn Signals
- Computer Slide-out Tray in Dash
- Powered Windshield Solar / Privacy Shades
- Driver / Passenger Side Window MCD Solar / Privacy Shades
- Fire Extinguisher

AVAILABLE OPTIONS:	36 QSH	40 QDH	40 QSH	40 QTH	42 QBH	42 QRH
Satellite Radio (Requires Subscription)	O	O	O	O	O	O
32" LCD Front Overhead TV	O	S	S	O	O	O
In-dash Stereo / GPS	O	O	O	O	O	O

LIVING AREA / DINETTE

STANDARD EQUIPMENT ON ALL MODELS:

- Booth Dinette with Laminate Tabletop & Solid Surface Edging
- Ultra Leather DE Sofa Bed on Passenger's Side
- Cloth DE Sofa Bed on Driver's Side

AVAILABLE OPTIONS:	36 QSH	40 QDH	40 QSH	40 QTH	42 QBH	42 QRH
Freestanding Dinette with Built-in Cabinets	O	O	O	O	O	O
Freestanding Dinette with Computer Workstation	O	O	O	O	O	O
32" LCD TV in Entertainment Center	S	NA	NA	S	S	S

PASSENGER'S SIDE

AVAILABLE OPTIONS:	36 QSH	40 QDH	40 QSH	40 QTH	42 QBH	42 QRH
Cloth DE Sofa Bed	O	O	O	O	O	O
Leather Air Coil® Hide-a-bed	NA	O	O	O	O	O

DRIVER'S SIDE

AVAILABLE OPTIONS:	36 QSH	40 QDH	40 QSH	40 QTH	42 QBH	42 QRH
Cloth Air Coil® Hide-a-bed	O	NA	NA	NA	NA	NA
Ultra Leather Air Coil® Hide-a-bed	O	NA	NA	NA	NA	NA
Ultra Leather DE Sofa Bed	O	O	O	O	O	O
Ultra Leather Magic Bed	O	O	O	O	O	O
Cloth Magic Bed	O	O	O	O	O	O
Leather Euro Recliner with Computer / End Table	O	O	O	O	O	O
Two Leather Euro Recliners	NA	O	O	O	O	O

KITCHEN

STANDARD EQUIPMENT ON ALL MODELS:

- Solid Surface Countertop with Stainless Steel Sink
- Solid Surface Sink & Stove Covers
- Expand-an-island
- Sink & Stove Cover Racks (Underneath Sink)
- Single Lever Sink Faucet with Sprayer
- Convection Microwave with Exterior Venting
- 4-door Refrigerator with Ice Maker
- 3-burner Cooktop
- Built-in Soap Dispenser

AVAILABLE OPTIONS:	36 QSH	40 QDH	40 QSH	40 QTH	42 QBH	42 QRH
Gas Oven	O	O	O	O	O	O
Residential Stainless Steel Refrigerator with 3000 Watt Inverter Plus Two Additional House Batteries	O	NA	NA	O	O	O

BATH

STANDARD EQUIPMENT ON ALL MODELS:

- Medicine Cabinet with Vanity Light
- Skylight in Shower with Sliding Solar Cover
- Solid Surface Vanity Top & Bowl
- Custom Raised Panel Bath Door
- Glass Shower Surround
- Glass Radius Shower Door
- 3-speed Fantastic® Fan
- Pfister® Shower Head

AVAILABLE OPTIONS:	36 QSH	40 QDH	40 QSH	40 QTH	42 QBH	42 QRH
Molded Fiberglass Garden Tub	NA	NA	S	NA	NA	NA
41" Molded Fiberglass Shower	S	S	NA	NA	NA	NA
36" Molded Fiberglass Shower with Radius Door	NA	NA	NA	S	S	S

BEDROOM

STANDARD EQUIPMENT ON ALL MODELS:

- Wardrobe with Automatic Lights
- Bed Comforter with Throw Pillows
- Pre-wired for DVD & Satellite Receiver
- Under Bed Storage
- Pillow Top Mattress
- Ceiling Fan
- 26" LCD TV
- Carbon Monoxide Detector
- LPG Leak Detector
- Chest of Drawers with Laundry Hamper

AVAILABLE OPTIONS:	36 QSH	40 QDH	40 QSH	40 QTH	42 QBH	42 QRH
King Bed Mattress	NA	O	O	O	O	O
Select Comfort™ (Dual Control) Bed System - Queen	O	O	O	O	O	O
Select Comfort™ (Dual Control) Bed System - King	NA	O	O	O	O	O
Memory Foam Mattress - Queen	O	O	O	O	O	O
Memory Foam Mattress - King	NA	O	O	O	O	O

GENERAL INTERIOR

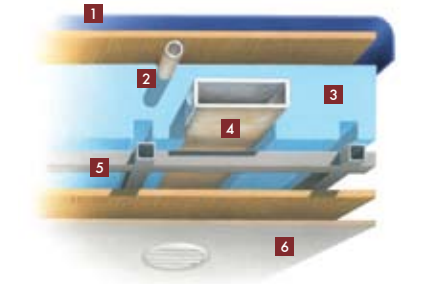
STANDARD EQUIPMENT ON ALL MODELS:

- 7' Ceilings
- Soft Touch Vinyl Ceilings
- Ceramic Tile Floor in Kitchen, Living Area, Bath & Entry Landing
- Carpeting in Bedroom & Driver's Compartment with Scotchgard®
- Raised Panel Hardwood Cabinet Doors & Drawers
- Two Ducted Furnaces (One 30,000 BTU & One 35,000 BTU)
- Complete Cable Wiring Interfacing with Surround Sound & Satellite Receivers
- Home Theatre Sound System with Concealed Speakers
- Medium Alderwood Cabinetry
- Solar & Privacy Rollease® Shades
- 12 V Fluorescent Lights
- 12 V Disconnect Switch
- Fantastic® Power Roof Vents with 3-speed Fans
- Tank Level Monitor System
- Smoke Detector
- 10-gallon Gas / Electric Water Heater
- Air Driven Step Well Cover

AVAILABLE OPTIONS:	36 QSH	40 QDH	40 QSH	40 QTH	42 QBH	42 QRH
Natural Maple Cabinetry (Simulated)	O	O	O	O	O	O
Cherry Bark Cabinetry (Simulated)	O	O	O	O	O	O
Combo Washer / Dryer	O	O	O	O	O	O
Stacked Washer / Dryer	O	O	O	O	O	O
Central Vacuum Cleaner	O	O	O	O	O	O
	S	S	S	S	S	S

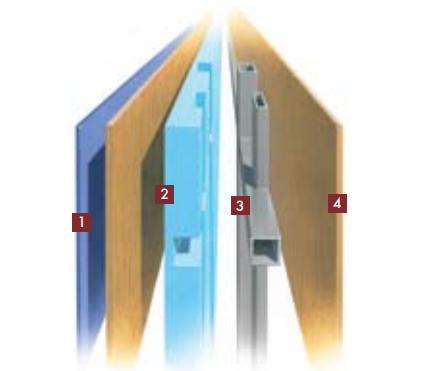
All options may not be available in all models. Because of progressive improvements, specifications, standard & optional equipment are subject to change without notice or obligation.

CONSTRUCTION SPECIFICATIONS



ROOF

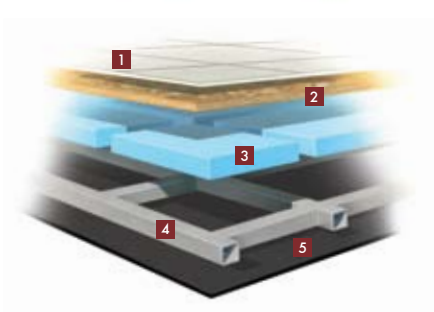
1. One-piece, moisture resistant molded fiberglass roof cap provides insulation and strength and prevents water intrusion
2. A/C Condensation Drainage System that runs internally through the roof insulation and down the sidewalls, redirecting water underneath the motorhome
3. 5½" high-performance thermal insulation
4. Quiet Air Cooling System with return air and cooling exhaust ducts foil-wrapped to deflect UV rays and repel heat
5. Durable, tubular steel roof skeleton
6. Easy-to-clean soft touch vinyl ceiling panel



SIDEWALL

1. Gel-coat fiberglass outside wall panel
2. High-performance thermal insulation
3. Durable, yet lightweight, tubular aluminum wall skeleton
4. Decorative inside wall panel

All sidewalls are approximately 2" thick.



FLOOR

1. Ceramic tile floor bonded to high-impact oriented strand board
2. High-level engineered oriented strand board
3. High-performance thermal insulation
4. Durable, tubular steel floor skeleton
5. Woven moisture barrier material

10-YEAR LIMITED UNITIZED CONSTRUCTION WARRANTY The structural integrity of the entire coach is guaranteed for the next 10 years. Warranty includes wall separation and inner frame weakness.

5-YEAR LIMITED LAMINATION WARRANTY We guarantee against all exterior fiberglass delamination or wall separation.

TIFFIN MOTORHOMES, INC. 105 2ND STREET NW RED BAY, AL 35582
CALL 256.356.8661 FAX 256.356.8219
FOR PARTS AND SERVICE CALL 256.356.0261

For more specifics on what makes a Tiffin Motorhome, go to tiffinmotorhomes.com

The following names are registered trademarks of Tiffin Motorhomes: Open Road®, Phaeton®, Allegro®, Allegro Bay®, Allegro Bus®, Zephyr®, Roughing It Smoothly®, and Pusher®.