

TIFFIN MOTORHOMES ZEPHYR®



TIFFIN MOTORHOMES

2009

THE 2009 *Zephyr*



GOLD CORAL EXTERIOR

premier travel

There's no better way to see the world than with the 2009 Zephyr. Because no other motorhome is as elegantly designed or crafted with such relentless dedication to the owner experience. For starters, it's built around the best engine you can find on the road today. Inside, the highest caliber materials have been selected with a single purpose: to create the most comforting home environment possible. Much more than a motorhome built on a solid chassis and eight wheels, the 2009 Zephyr is an exquisitely designed masterpiece, built upon a foundation of commitment to you. It truly is the pinnacle of the motorhome lifestyle.



THE 2009 *Zephyr*

TIFFIN ZEPHYR INTERIOR & EXTERIOR



TECHNICAL SPECS

AUTOMOTIVE

STANDARD EQUIPMENT ON ALL MODELS:

- 500 HP @ 1,900-2,000 rpm Cummins ISM 10.8-liter Engine
- Allison 4000 MH Transmission
- Heavy Duty Rear Hitch with 15,000 lb. Towing Capacity
- Six Aluminum Wheels
- Independent Front Suspension
- Two-stage Engine Brake
- Full Air Brakes
- VIP Smart Wheel
- Hadley SLS - Automatic Air Leveling System

SPARTAN K2 CHASSIS

Torque (Lb.-Ft. Max. Net)	1550 @ 1,300	GCWR	61,600
GVWR	46,600	Fuel Tank (Gallons)	150 (292" From Front Axle to Drive Axle)
GAWR-Front	16,600	Wheel Base	316"
GAWR-Rear	20,000	Tire Size	315 / 80R22.5
Tag Axle	10,000	Alternator Amps	270

OVERALL

Overall Length - Approximately	44' 9"	Fresh Water (Gallons)	90
Overall Height with Roof Air (Maximum)	12' 10"	Black Water (Gallons)	45
Interior Height	84"	Grey Water (Gallons)	70
Overall Width	101"	LPG Tank (Gallons; limited to 80% capacity)	24.4
Interior Width	96"	Minimum Garage Height	13'
Basement Storage (Cubic Feet - Approximate)	167.5		

STRUCTURAL

STANDARD EQUIPMENT ON ALL MODELS:

- Steel Cockpit Overhead Support Structure
- Seamless One-piece Gel-coat Fiberglass Molded Roof Cap
- One-piece Molded Gel-coat Fiberglass Front & Rear Caps with Integrated Air Intake
- Laminated Gel-coat Fiberglass Sidewalls
- Steel / Aluminum Laminated Side Walls, Floor & Roof
- 1/2" Laminated Floor Decking
- Insulated Roof Duct Laminated into Roof Construction
- Steel Basement Construction
- Insulated Steel Cage Engine Cover

EXTERIOR

STANDARD EQUIPMENT ON ALL MODELS:

- One-piece Fiberglass Gel-coat Front & Rear Fenders with Integrated Storage
- Fiberglass Gel-coat Engine Access Door with Swing-up Hinges & Shocks
- One-piece Aluminum Face Swing-out Baggage Doors with Integrated Power Locks
- Pass-through Full Basement
- Slide-out Storage Tray (Slides Out Both Sides)
- 12,500 Onan® Generator
- Phone, 120 V & 12 V Outlets Inside Storage Compartment
- Auto Generator Start System
- Eight House Batteries
- Powered Pullout for Generator Access
- Three Low Profile Roof Air Conditioners with Heat Pumps
- Two 125 Watt Solar Panels
- Easy Hook-up Water Compartment with Built-in Hose Exits
- Multi-port Manifold System for Hot & Cold Water Lines
- Fiberglass Water Service Center Panel & Compartment
- Water Pump Switch Located at Galley, Lavatories & Water Service Compartment
- In-motion Low-profile Satellite System
- One-piece Panoramic Windshield
- Black Tank & Grey Tank Flush System
- Water Filter
- Power Garden Hose Reel
- Outside Shower
- Air Horn
- Recessed Docking & Fog Lights
- Basement & Outside Compartment Lights
- Porch Lights
- Lighted Exterior Grab Handle
- Deadbolt Entrance Door Lock
- Keyless Entry System (Includes Exterior Compartment Doors)
- Full Length "ZEPHYR" Mud Flap
- HD TV Antenna
- Electric Power Cord Reel
- 32" Exterior LCD TV
- Carefree Paramount Awning (Three Positions)
- Diamond Shield® Front Cap Protective Coating
- Aerodynamic Streamlined Appearance
- Tank Monitor Pad Located at Dump Station

	45 QBZ	45 QEZ
2nd Slide Out Tray	<input type="radio"/>	<input type="radio"/>

All options may not be available in all models. Because of progressive improvements, specifications, standard & optional equipment are subject to change without notice or obligation.

DRIVER'S COMPARTMENT

STANDARD EQUIPMENT ON ALL MODELS:

- Ergonomic Wrap-around Dash with Burl Wood Instrument Panels
- Back Light Lettering for Dash Controls
- Built-in Driver & Passenger Consoles with Controls
- Six-way Power Driver & Passenger Seats including Passenger Power Footrest
- Integrated Driver & Passenger Seat Belts
- 32" LCD TV Over Cockpit
- In-dash Stereo / GPS
- Storage Drawers with Built-in Beverage Tray
- Smart Wheel with Controls for ICC, Cruise & Windshield Wipers
- Adjustable Accelerator & Brake Pedals
- Power Steering
- Driver & Passenger Overhead Fans
- Sliding Dash Map Drawer
- Driver & Passenger Map Lights
- Power MCD Solar / Privacy Windshield Shade
- Driver / Passenger Side Power Windows & Power MCD Solar / Privacy Shades
- Dual 12 V Outlets in Dash Area (Driver)
- Phone Jack 12 V Outlet (Passenger)
- Color Rear Vision Monitor System with Side-view Cameras
- Side-view Cameras Activated by Turn Signals
- Compass with Outside Temperature
- CB Radio with Antenna
- Sirius® Radio (Requires Subscription)
- Cellular Phone Antenna
- Quick Power Disconnect
- Fire Extinguisher

LIVING AREA / DINETTE

STANDARD EQUIPMENT ON ALL MODELS:

- Freestanding Dinette with Built-in Storage Cabinets
- Full Ceramic Tile Flooring
- Cloth Magic Sofa Bed on Driver Side
- Ultra Leather Magic Sofa Bed on Passenger Side
- Decorative Ceiling Panel
- Home Theater System with DVD Player
- Decorative Wall & Dinette Lighting Package
- Carbon Monoxide Detector

	45 QBZ	45 QEZ		45 QBZ	45 QEZ
Ultra Leather Air-Coil® Hide-a-bed on Passenger Side	<input type="radio"/>	<input type="radio"/>	Cocoa-glazed Entertainment Center (Only Available with Natural Cherry or Cherry Cabinetry)	<input type="radio"/>	<input type="radio"/>
Cloth Air-Coil® Hide-a-bed on Passenger Side	<input type="radio"/>	<input type="radio"/>	Black-glazed Entertainment Center	<input type="radio"/>	<input type="radio"/>
Ultra Leather Euro Recliner with Computer/End Table on Driver Side	<input type="radio"/>	<input type="radio"/>	Ultra Leather U-shaped Dinette / Sleeper Sofa	<input type="radio"/>	<input type="radio"/>
Two Ultra Leather Euro Recliners on Driver Side	<input type="radio"/>	<input type="radio"/>	Freestanding Dinette with Computer Workstation	<input type="radio"/>	<input type="radio"/>
42" Mid-living Room Entertainment Center	S	NA	Ultra Leather Magic Sofa Bed on Driver Side	<input type="radio"/>	<input type="radio"/>
37" Mid-living Room Entertainment Center	NA	S	Cloth Magic Sofa Bed on Passenger Side	<input type="radio"/>	<input type="radio"/>

KITCHEN

STANDARD EQUIPMENT ON ALL MODELS:

- Solid Surface Countertops and Splash Guards
- Electric Residential Refrigerator with Eight House Batteries
- Recessed Princess Two-burner Cooktop with Solid Surface Covers
- Integrated Solid Surface Galley Sink with Solid Surface Covers
- Pull-out Hardwood Pantry with Solid Surface Cutting Board
- Ceramic Tile Backsplash with Decorative Inlays
- Stainless Steel Convection Microwave with Exterior Venting
- Power MCD Solar / Privacy Shades & Hardwood Valance
- Built-in Soap Dispenser
- Fluorescent Galley Light

	45 QBZ	45 QEZ
Drawer Type Dishwasher	<input type="radio"/>	<input type="radio"/>

BATH

STANDARD EQUIPMENT ON ALL MODELS:

- Two Lavatories with Medicine Cabinets & Drawers
- Elongated Ceramic Toilet with Electric Flush
- Built-in Soap Dispenser at Lavatory
- Integrated Solid Surface Lavatory Sink
- Vessel Lavatory Sink
- Cosmetic Lights over Lavatories
- Solid Surface Shower Walls with Inlaid Tile
- Towel Holders, Robe Hook, & Lavatory Accessories Package
- Raised Panel Bath Doors
- Scrolled Glass Pocket Doors
- Curved Shower Enclosure Door
- Stacked Washer / Dryer
- Skylight in Shower with Sliding Cover
- Adjustable Shower Head on Slide Bar

	45 QBZ	45 QEZ
Bath & a Half	S	NA

BEDROOM

STANDARD EQUIPMENT ON ALL MODELS:

- 32" LCD TV
- Memory Foam King Mattress with Nightstands
- Shirt Closet with Drawers
- Large Carpeted Storage Area beneath Bed
- Decorative Ceiling Panel
- Ceiling Fan
- LP Detector
- Large Cedar-lined Wardrobe Closet with Built-in Drawers, Sliding Hardwood/Mirror Doors & Automatic Lights
- MCD Solar / Privacy Shades
- Pre-wired for DVD & Satellite Receiver

GENERAL INTERIOR

STANDARD EQUIPMENT ON ALL MODELS:

- Wall Mounted Thermostats
- 12 V Attic Fans with Hardwood Louvers & Wall Mounted Controls
- Cable TV Hook-Up & Phone Jacks
- Solid Hardwood Raised Panel Doors
- Carpeted Cabinet Shelves
- Ball Bearing Drawer Slides
- In-motion Digital Satellite Dish
- Wallpaper Covering on Sidewalls
- Padded Soft Touch Vinyl Ceiling
- MCD Power Solar / Privacy Shades
- High-gloss Ceramic Tile Flooring
- Built-in Speakers with Matching Hardwood Louvers
- 3000 Watt Sine Wave Inverter
- Ceiling Flush Mounted Multi-lighting System
- Wall Mounted Switches for Lights & Accessories
- Rope Lights Beneath Galley & Bedroom Vanity Area
- Rope Lights in Window Valances
- 50-amp Distribution
- 12 V Fuse Panel
- Ducted Return Air Conditioning System
- Air Driven Step Well Cover
- Battery Disconnect Switch
- Smoke Alarm
- GFI Outlets at Galley & Lavatories
- Lighted Interior Grab Handle
- Entertainment System
- Complete Cable Wiring Interfacing with Surround Sound & Satellite Receiver
- Hydronic Heating System with Continuous Hot Water

INTERIOR SPECIFICATIONS

CABINETS & FABRICS

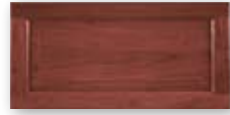
All cabinet doors are made of solid wood and all finishes are available in combination with all fabric schemes.



Natural Cherry



Cherry Wood



Cherry Bark



Glazed Cherry

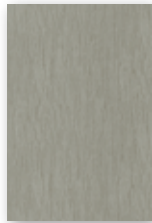


White Chocolate in Bath
Available Only in Combination
with Glazed Cherry

BELAIR



Bedroom



Bedroom Accent



Cloth Sofa



Living Area Accent



Dinette



Carpet

GRAPHITE



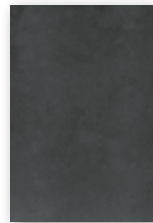
Bedroom



Bedroom Accent



Cloth Sofa



Living Area Accent

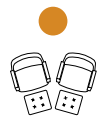


Dinette

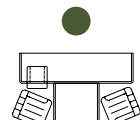


Carpet

OPTIONS AVAILABLE for 45 QBZ & 45 QEZ



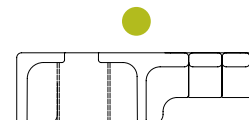
EURO RECLINERS



FREESTANDING DINETTE WITH
COMPUTER WORKSTATION
(Available after August 1, 2008)

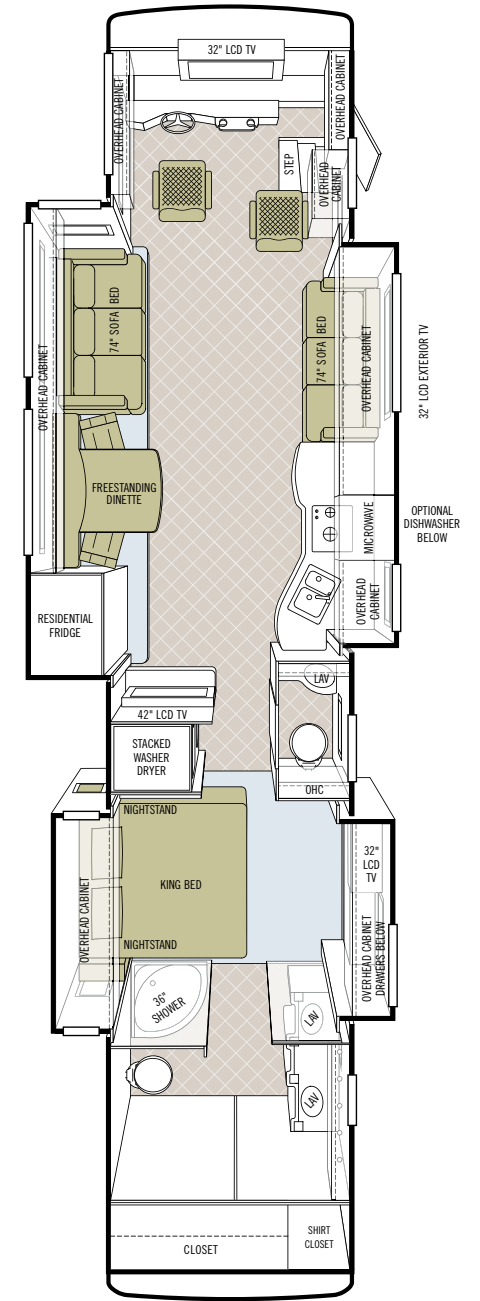


EURO RECLINER WITH
COMPUTER/END TABLE



ULTRA LEATHER U-SHAPED DINETTE
& SLEEPER SOFA

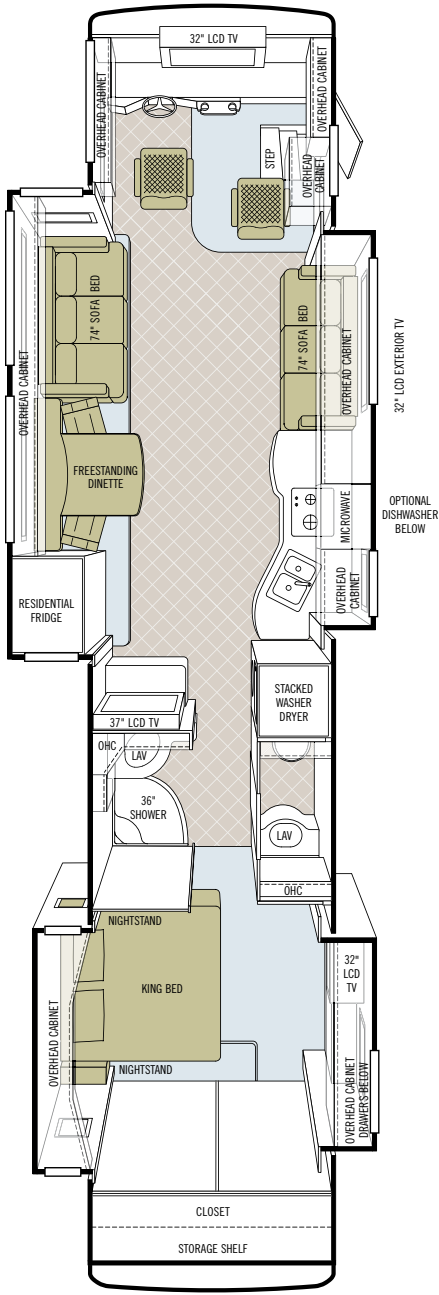
FLOOR PLANS



45 QBZ



FULL BODY PAINT COLORS



45 QEZ



GOLD CORAL



MOCHA GOLD CORAL



MAROON CORAL



MOCHA MAROON CORAL



SILVER SAND



MOCHA SILVER SAND



SUNLIT SAND



MOCHA SUNLIT SAND



NASA

Note: Mocha is similar in hue to Standard Black, but offers more of a warm chocolate tone.



Start your journey by visiting our website. We'd love to hear from you, so give us a call, send us a postcard or stop by our office the next time you pass by Red Bay. Because remember, wherever you go, we go.

Sincerely

DEALER



TIFFIN MOTORHOMES

LET YOUR JOURNEY BEGIN.

Where you go from here is entirely up to you. And when you go, you bring the best warranty and service plan in the motorhome industry along for the ride. For more than 30 years, we've been building quality products for a family of customers who share our love for travel by motorhome. The places they've seen and the experiences they've collected are immeasurable. We're proud to have been a part of their lives. They are the reason that every day, we do everything we can to strengthen the relationship we enjoy with our customers and the relationship they enjoy with the road.

WARRANTIES THAT GO WHEREVER YOU GO.

■ 10-YEAR LIMITED UNITIZED CONSTRUCTION WARRANTY

The structural integrity of the entire coach is guaranteed for the next 10 years. Warranty includes wall separation and inner frame weakness.

■ 5-YEAR LIMITED LAMINATION WARRANTY

We guarantee against all exterior fiberglass delamination or wall separation.

105 2nd Street NW, Red Bay, AL 35582

call 256.356.8661 fax 256.356.8219 or visit tiffinmotorhomes.com

The following names are registered trademarks of Tiffin Motorhomes: Open Road®, Phaeton®, Allegro®, Allegro Bay®, Allegro Bus®, Zephyr®, Roughing It Smoothly®, and Pusher®.