



GOLD CORAL



MAROON CORAL



ROCKY MOUNTAIN BROWN



SILVER SAND



SUNLIT SAND

CHOOSE YOUR BEAUTIFUL.

Engineering makes a Tiffin reliable, but design is what makes it unique. From cabinets crafted in our own cabinet shop to the designer-chosen finishes, here's everything you need to make your Allegro your own. For a complete list of options and specifications, please visit tiffinmotorhomes.com

INTERIOR OPTIONS



Cherry Bark

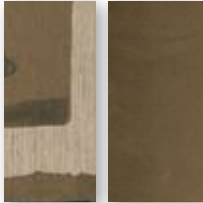


Medium Alderwood



Carpet

ESTATE



Bedroom/
Bedroom Accent



Sofa

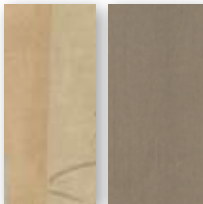


Living Area Accent



Dinette

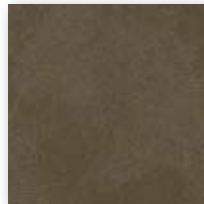
KEY LARGO



Bedroom/
Bedroom Accent



Sofa

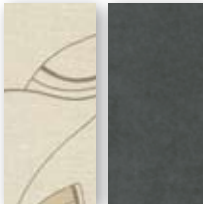


Living Area Accent



Dinette

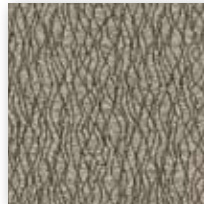
PLATINUM



Bedroom/
Bedroom Accent



Sofa



Living Area Accent

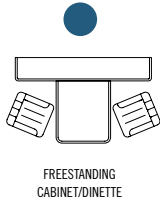


Dinette

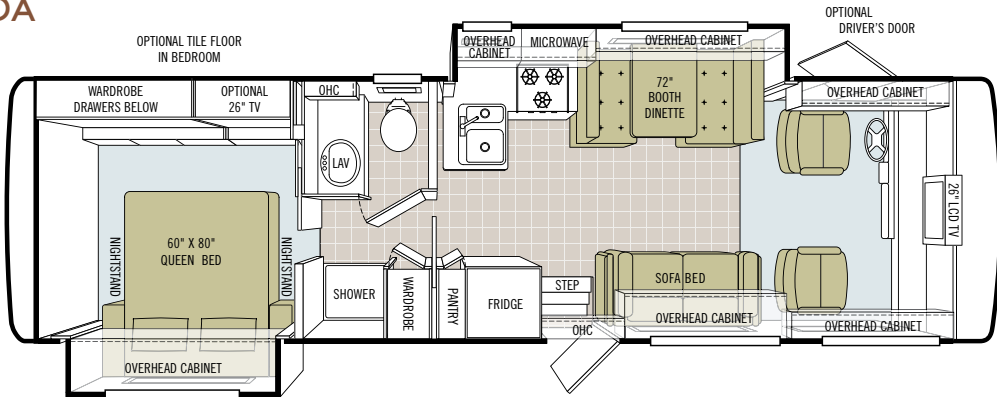
Cabinet doors are made of solid wood, and all cabinet finishes are available in combination with any fabric scheme.

All options may not be available in every model. Specifications and standard or optional equipment are subject to change without notice or obligation.

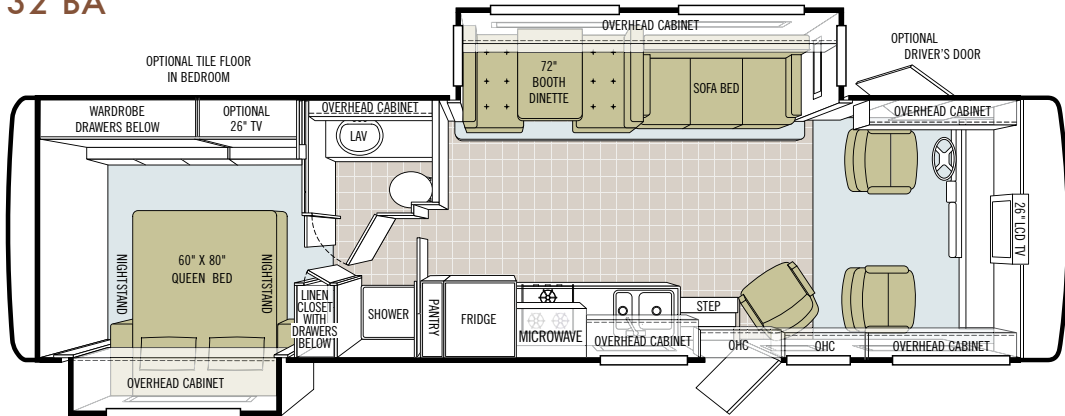
OPTION KEY



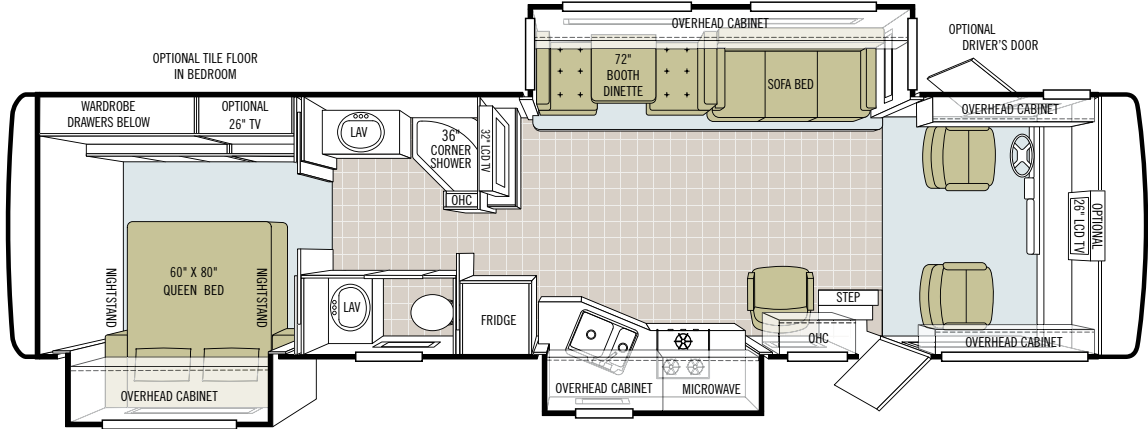
30 DA



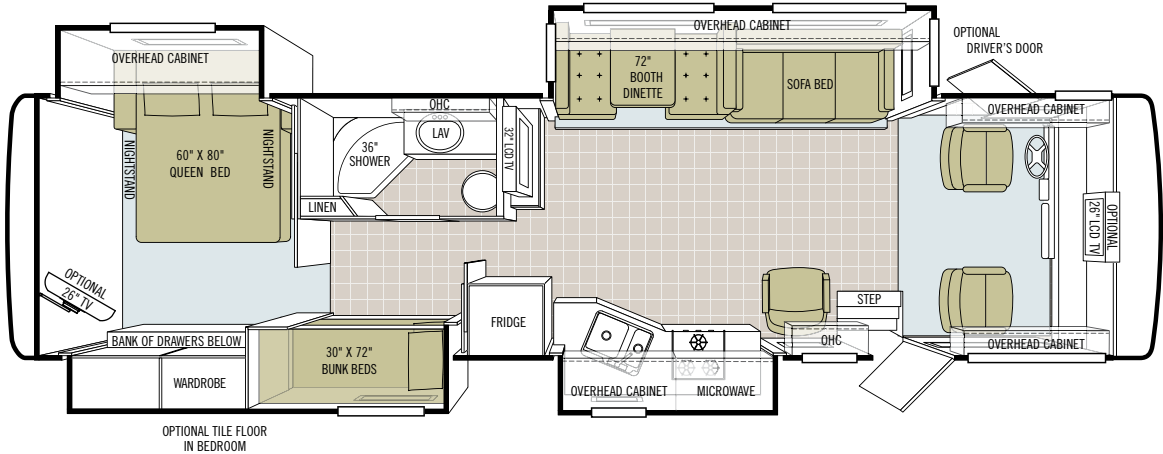
32 BA



● 34 TGA



● 35 QBA



TECHNICAL SPECIFICATIONS

AUTOMOTIVE

STANDARD EQUIPMENT ON ALL MODELS:

- TorqShift® 5-speed Automatic Overdrive with Tow/Haul Mode (Ford)
- 1000 MH Series 6-speed Automatic Allison Transmission with Overdrive (Workhorse)
- Cruise Control
- Emergency Start Switch

FORD CHASSIS	30 DA	32 BA	34 TGA	35 QBA
Engine - 362 HP	6.8 L V10	6.8 L V10	6.8 L V10	6.8 L V10
Torque (Lb.-Ft. Max. Net)	457 @ 3250	457 @ 3250	457 @ 3250	457 @ 3250
GVWR	22,000 Lb.	22,000 Lb.	22,000 Lb.	22,000 Lb.
GAWR - Front	7,500 Lb.	7,500 Lb.	7,500 Lb.	7,500 Lb.
GAWR - Rear	14,500 Lb.	14,500 Lb.	14,500 Lb.	14,500 Lb.
GCWR	26,000 Lb.	26,000 Lb.	26,000 Lb.	26,000 Lb.
Wheel Base	208"	228"	242"	242"
Tire Size	235/80R 22.5-GXRV	235/80R 22.5-GXRV	235/80R 22.5-GXRV	235/80R 22.5-GXRV
Fuel Tank (Gallons)	75	75	75	75
Alternator Amps	130	130	130	130
Trailer Hitch Capacity	5,000 Lb.	5,000 Lb.	5,000 Lb.	5,000 Lb.

WORKHORSE CHASSIS	30 DA	32 BA	34 TGA	35 QBA
Engine - 340 HP	8.1 L V8	8.1 L V8	8.1 L V8	8.1 L V8
Torque (Lb.-Ft. Max. Net)	455 @ 4200	455 @ 4200	455 @ 4200	455 @ 4200
GVWR	22,000 Lb.	22,000 Lb.	22,000 Lb.	22,000 Lb.
GAWR - Front	8,000 Lb.	8,000 Lb.	8,000 Lb.	8,000 Lb.
GAWR - Rear	14,500 Lb.	14,500 Lb.	14,500 Lb.	14,500 Lb.
GCWR	26,000 Lb.	26,000 Lb.	26,000 Lb.	26,000 Lb.
Wheel Base	208"	228"	242"	242"
Tire Size	235/80R 22.5	235/80R 22.5	235/80R 22.5	235/80R 22.5
Fuel Tank (Gallons)	75	75	75	75
Alternator Amps	145	145	145	145
Trailer Hitch Capacity	5,000 Lb.	5,000 Lb.	5,000 Lb.	5,000 Lb.

FREIGHTLINER FRONT ENGINE DIESEL CHASSIS	30 DA	32 BA	34 TGA	35 QBA
Engine - 300 HP	NA	Cummins	Cummins	Cummins
Torque (Lb.-Ft. Max. Net)	NA	620 @ 1500	620 @ 1500	620 @ 1500
GVWR	NA	24,000 Lb.	24,000 Lb.	24,000 Lb.
GAWR - Front	NA	9,000 Lb.	9,000 Lb.	9,000 Lb.
GAWR - Rear	NA	15,000 Lb.	15,000 Lb.	15,000 Lb.
GCWR	NA	26,000 Lb.	26,000 Lb.	26,000 Lb.
Wheel Base	NA	228"	242"	242"
Tire Size	NA	235/80R 22.5	235/80R 22.5	235/80R 22.5
Fuel Tank (Gallons)	NA	80	80	80
Alternator Amps	NA	160	160	160
Allison Transmission	NA	S	S	S
Trailer Hitch Capacity	NA	5,000 Lb.	5,000 Lb.	5,000 Lb.

OVERALL

MODELS:	30 DA	32 BA	34 TGA	35 QBA
Overall Length (Approximate)	31' 3"	32' 10"	34' 10"	35' 10"
Overall Height with Roof Air (Maximum)	12' 7"	12' 7"	12' 7"	12' 7"
Interior Height	83.5"	83.5"	83.5"	83.5"
Overall Width	101"	101"	101"	101"
Interior Width	96"	96"	96"	96"
Fresh Water (Gallons)	53	53	53	80
Black Water (Gallons)	35	35	35	45
Grey Water (Gallons)	70	70	70	70
LPG Tank (Gallons; can only be filled to 80% capacity)	24	24	24	24
Minimum Garage Height	13'	13'	13'	13'
Basement Storage (Cubic Feet - Approximate)	57	67	69	69

STRUCTURAL

STANDARD EQUIPMENT ON ALL MODELS:

- Laminated Floor, Sidewall & Roof
- Steel/Aluminum Reinforced Structure
- One-piece Molded Fiberglass Roof Cap

EXTERIOR

STANDARD EQUIPMENT ON ALL MODELS:

- Fiberglass Front & Rear Caps
- Tinted One-piece Windshield
- 5.5 kw Onan® Generator (Gas Engine Only)
- Two 13,500 BTU High Profile Roof Coleman A/Cs (High Efficiency)
- Quiet A/C Roof-ducted System
- Double Electric Step
- 1/4" Thick Single Pane Windows
- Horizontal Mounted Wipers
- Heated Power Mirrors
- Exterior Patio Light
- Power Patio Awning
- Slide-out Awning(s)
- Hydraulic Automatic Leveling Jacks
- BASF Full Body Paint with Front Cap Protective Film
- Convenient Access Doors with Gas Shocks
- Ridged Long-life Storage Boxes
- Single Handle Lockable Storage Door Latches
- Heated Water & Holding Tank Compartments
- Two 6 V Auxiliary Batteries
- Park Telephone Ready
- Digital TV Antenna
- Cable Ready TV
- Side-view Cameras Activated by Turn Signals
- 50 Amp Service
- Black Holding Tank Flush System
- Exterior Rinse Hose / Shower
- Back-up Monitor
- 110 V Exterior Receptacle
- 110 V / 12 V Converter
- Undercoating
- Roof Ladder
- External Tripod Satellite Hook-up

AVAILABLE OPTIONS:	30 DA	32 BA	34 TGA	35 QBA
6.0 kw Onan® Diesel Generator* (FRED Chassis Only)	NA	S*	S*	S*
7.0 kw Onan® Generator (Gas Engine Only)	O	O	O	O
Automatic Satellite	O	O	O	O
One 15,000 BTU High Profile Roof A/C with Heat Pump	O	O	O	O
CB Antenna	O	O	O	O

*Standard on all FRED chassis models only

DRIVER'S COMPARTMENT

STANDARD EQUIPMENT ON ALL MODELS:

- Entry Floor Light
- Step Switch & 12 V Disconnect Switch
- Non-power Cloth Passenger & Driver Seats
- Lighted Instrument Panel
- Single CD Player & AM/FM Stereo
- Passenger Slide Tray / Computer Drawer
- 12 V Dash Receptacle
- Tilt Steering Wheel
- Dual Dash Fans
- Power Windshield Solar / Privacy Shade
- Fire Extinguisher
- Snack / Beverage Tray

AVAILABLE OPTIONS:	30 DA	32 BA	34 TGA	35 QBA
Power Cloth Driver & Passenger Seats	O	O	O	O
Power Halo Leather Driver & Passenger Seats	O	O	O	O
Driver's Door with Power Window	O	O	O	O
26" LCD Front Overhead TV	S	S	O	O

LIVING AREA / DINETTE

STANDARD EQUIPMENT ON ALL MODELS:

- Booth Dinette with Large Pullout Storage Drawers
- Cloth DE Sofa Bed
- Swivel Chair
- Decorative Wall Hanging

AVAILABLE OPTIONS:	30 DA	32 BA	34 TGA	35 QBA
Cloth Flex-o Bed Sleeper Sofa	NA	O	O	O
Halo Leather Flex-o Bed Sofa	NA	O	O	O
Freestanding Dinette with Cabinets	NA	O	O	O
32" LCD TV in Entertainment Center	NA	NA	S	S
DVD Player	O	O	O	O
Home Theater Surround Sound System (Includes DVD Player)	O	O	O	O

KITCHEN

STANDARD EQUIPMENT ON ALL MODELS:

- Single Lever Satin Nickel Sink Faucet
- Solid Surface Countertop Edging
- 3-burner Cooktop with Gas Oven
- 8 Cubic Foot Refrigerator
- Double Bowl Kitchen Sink
- Solid Surface Backsplashes
- Microwave with Exterior Venting

AVAILABLE OPTIONS:	30 DA	32 BA	34 TGA	35 QBA
Convection / Microwave	O	O	O	O
Icemaker in Refrigerator	O	O	O	O
Solid Wood Refrigerator Panels	O	O	O	O

BATH

STANDARD EQUIPMENT ON ALL MODELS:

- Medicine Cabinet
- Skylight in Shower
- Fantastic® Fan (Water Closet Only)
- Satin Nickel Vanity Faucet
- Fiberglass Molded Shower

BEDROOM

STANDARD EQUIPMENT ON ALL MODELS:

- Wardrobe with Automatic Light
- Innerspring Queen Mattress (60" X 80")
- Solar / Privacy RollEase® Shades
- Wall-to-wall Carpeting
- Bed Comforter with Throw Pillows

AVAILABLE OPTIONS:	30 DA	32 BA	34 TGA	35 QBA
26" LCD TV	O	O	O	O
Bunk Beds (30" X 72") with Bunk Ladder	NA	NA	NA	S
DVD Monitors in Bunk	NA	NA	NA	O
Tile Flooring in Bedroom	O	O	O	O

GENERAL INTERIOR

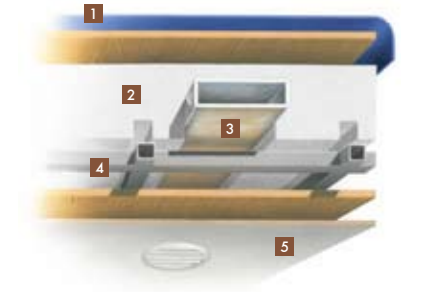
STANDARD EQUIPMENT ON ALL MODELS:

- Soft Touch Vinyl Ceiling
- Raised Panel Hardwood Cabinet Doors
- Medium Alderwood Solid Cabinet Doors & Drawer Fronts
- Solid Wood Cabinet Fascias
- Wall-to-wall Vinyl Tile Flooring in Living Room, Kitchen & Bath
- Ball Bearing Drawer Slides
- Scotchgard® Treated Carpet & Fabrics
- Solar / Privacy RollEase® Shades
- Power Roof Vents
- Carbon Monoxide Detector
- Smoke Detector
- LPG Leak Detector
- Tank Level Monitor System
- 6-gallon DSI Gas / Electric Water Heater
- Compartment Door with Single Point Latch

AVAILABLE OPTIONS:	30 DA	32 BA	34 TGA	35 QBA
Central Vacuum Cleaner	O	O	O	O
One 30,000 BTU Ducted Furnace	S	NA	NA	NA
Two 30,000 BTU Ducted Furnaces	NA	NA	S	S
One 35,000 BTU Ducted Furnace	NA	S	NA	NA
Cherry Bark Solid Cabinet Doors & Drawer Fronts	O	O	O	O

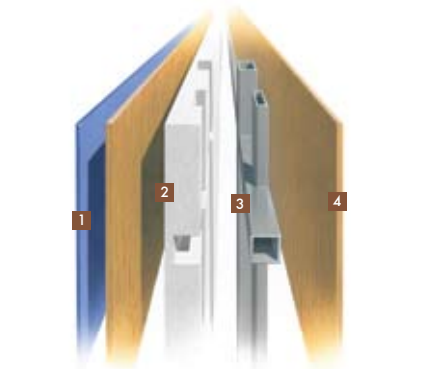
All options may not be available in every model. Specifications and standard or optional equipment are subject to change without notice or obligation.

CONSTRUCTION SPECIFICATIONS



ROOF

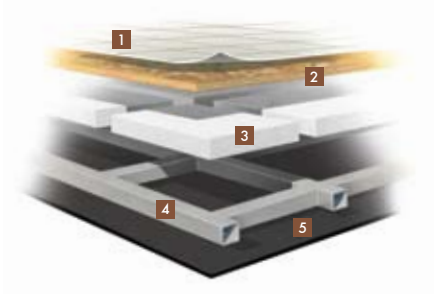
1. One-piece, moisture resistant molded fiberglass roof cap provides insulation and strength and prevents water intrusion
2. 5½" formed insulation
3. Quiet Air Cooling System with return air and foil-wrapped cooling exhaust ducts
4. Durable, tubular aluminum roof skeleton
5. Easy-to-clean soft touch vinyl ceiling panel



SIDEWALL

1. Gel-coat fiberglass outside wall panel
2. High-performance thermal insulation
3. Durable, yet lightweight, tubular aluminum wall skeleton
4. Decorative inside wall panel

All sidewalls are approximately 2" thick.



FLOOR

1. Vinyl tile flooring bonded to high-impact oriented strand board
2. High-level engineered oriented strand board
3. High-performance thermal insulation
4. Durable, tubular steel floor skeleton
5. Woven moisture barrier material

10-YEAR LIMITED UNITIZED CONSTRUCTION WARRANTY The structural integrity of the entire coach is guaranteed for the next 10 years. Warranty includes wall separation and inner frame weakness.

5-YEAR LIMITED LAMINATION WARRANTY We guarantee against all exterior fiberglass delamination or wall separation.

TIFFIN MOTORHOMES, INC. 105 2ND STREET NW, RED BAY, AL 35582
CALL 256.356.8661 FAX 256.356.8219
FOR PARTS AND SERVICE CALL 256.356.0261

For more specifics on what makes a Tiffin Motorhome, go to tiffinmotorhomes.com

The following names are registered trademarks of Tiffin Motorhomes: Open Road®, Phaeton®, Allegro®, Allegro®RED, Allegro Bay®, Allegro Bus®, Zephyr®, Roughing It Smoothly®, and Pusher®.