

FULL BODY PAINT COLORS



GOLD CORAL



MAROON CORAL



NASA



ROCKY MOUNTAIN BROWN

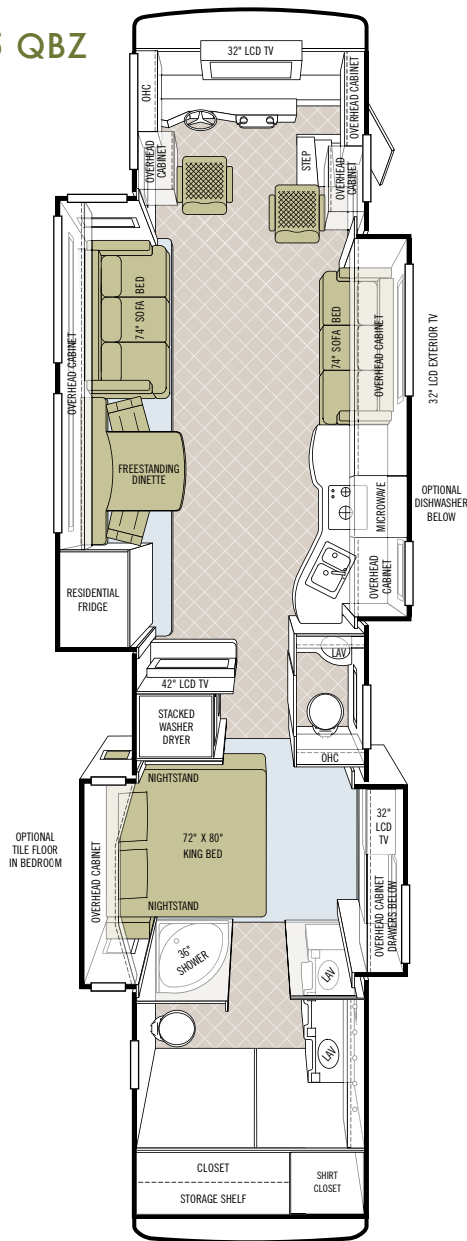


SILVER SAND

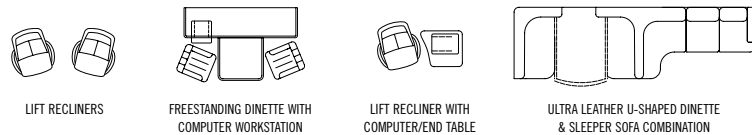


SUNLIT SAND

45 QBZ



OPTIONS AVAILABLE



For more specifics on what makes a Tiffin Motorhome, go to tiffinmotorhomes.com

TECHNICAL SPECS

AUTOMOTIVE

STANDARD EQUIPMENT ON ALL MODELS:

- 500 HP @ 1,900-2,000 rpm Cummins ISM 10.8-liter Engine
- Allison 4000 MH Transmission
- Heavy Duty Rear Hitch with 15,000 Lb. Towing Capacity
- Six Aluminum Wheels
- Independent Front Suspension
- Two-stage Engine Brake
- Fog Lights
- Full Air Brakes
- VIP Smart Wheel
- Hadley SLS - Automatic Air Leveling System

SPARTAN K2 CHASSIS

Torque (Lb.-Ft. Max. Net)	1550 @ 1,300	GCWR	61,600 Lb.
GVWR	46,600 Lb.	Fuel Tank (Gallons)	150
GAWR-Front	16,600 Lb.	Wheel Base	316" (292" From Front Axle to Drive Axle)
GAWR-Rear	20,000 Lb.	Tire Size	315 / 80R22.5
Tag Axle	10,000 Lb.	Alternator Amps	270
Trailer Hitch Capacity	10,000 Lb.		

OVERALL

Overall Length - Approximately	44' 9"	Fresh Water (Gallons)	90
Overall Height with Roof Air (Maximum)	12' 10"	Black Water (Gallons)	50
Interior Height	84"	Grey Water (Gallons)	70
Overall Width	101"	LPG Tank (Gallons; limited to 80% capacity)	24.4
Interior Width	96"	Minimum Garage Height	13'
Basement Storage (Cubic Feet - Approximate)	167.5		

STRUCTURAL

STANDARD EQUIPMENT ON ALL MODELS:

- Steel Cockpit Overhead Support Structure
- Seamless One-piece Gel-coat Fiberglass Molded Roof Cap
- One-piece Molded Gel-coat Fiberglass Front & Rear Caps with Integrated Air Intake
- Gel-coat Fiberglass Outside Wall Panels
- Steel / Aluminum Laminated Side Walls, Floor & Roof
- 1/2" Laminated Floor Decking
- Insulated Roof Duct Laminated into Roof Construction
- Steel Basement Construction

EXTERIOR

STANDARD EQUIPMENT ON ALL MODELS:

- One-piece Fiberglass Gel-coat Front & Rear Fenders with Integrated Storage
- Fiberglass Gel-coat Engine Access Door with Swing-up Hinges & Shocks
- One-piece Aluminum Face Swing-out Baggage Doors with Integrated Power Locks
- Pass-through Full Basement
- Slide-out Storage Tray (Slides Out Both Sides)
- 12,500 Onan® Generator
- Phone, 120 V & 12 V Outlets Inside Storage Compartment
- Auto Generator Start System
- Eight House Batteries
- Powered Pullout for Generator Access
- Three Low Profile Roof Air Conditioners with Heat Pumps
- Two 125 Watt Solar Panels
- Easy Hook-up Water Compartment with Built-in Hose Exits
- Multi-port Manifold System for Hot & Cold Water Lines
- Fiberglass Water Service Center Panel & Compartment
- Water Pump Switch Located at Galley, Lavatories & Water Service Compartment
- In-motion Low-profile Satellite System
- One-piece Panoramic Windshield
- Black Tank Flush System
- Water Filter
- Power Garden Hose Reel
- Outside Shower
- Air Horn
- Recessed Docking Lights
- Basement & Outside Compartment Lights
- Magnum Sine Wave Inverter
- Porch Lights
- Lighted Exterior Grab Handle
- Deadbolt Entrance Door Lock
- Keyless Entry System (Includes Exterior Compartment Doors)
- Custom Mud Flap
- Electric Power Cord Reel
- 32" Exterior LCD TV
- Carefree Paramount Awning (Three Positions)
- Diamond Shield® Front Cap Protective Coating
- Aerodynamic Streamlined Appearance
- SeeLevel Tank Monitor
- Tank Monitor Pad Located at Dump Station

AVAILABLE OPTIONS:

2nd Slide-out Tray	2nd Carefree Paramount Awning (Patio Side Only)
--------------------	---

All options may not be available in every model. Specifications and standard or optional equipment are subject to change without notice or obligation.

DRIVER'S COMPARTMENT

STANDARD EQUIPMENT ON ALL MODELS:

- Ergonomic Wrap-around Dash with Burl Wood Instrument Panels
- Back Light Lettering for Dash Controls
- Built-in Driver & Passenger Consoles with Control Switches
- Six-way Power Driver & Passenger Seats including Passenger Power Footrest
- Integrated Driver & Passenger Seat Belts
- 32" LCD Front Overhead TV
- In-dash Stereo / GPS
- Storage Drawers with Built-in Beverage Tray
- Smart Wheel with Controls for ICC, Cruise & Windshield Wipers
- Adjustable Accelerator & Brake Pedals
- Power Steering
- Driver & Passenger Overhead Fans
- Computer Slide-out Tray with Lock-out Rails
- Driver & Passenger Map Lights
- Power Solar / Privacy Windshield Shade
- Driver / Passenger Side Power Windows & Power Solar / Privacy Shades
- Dual 12 V Outlets in Dash Area (Driver)
- Phone Jack 12 V Outlet (Passenger)
- Color Rear Vision Monitor System with Side-view Cameras
- Side-view Cameras Activated by Turn Signals
- Compass with Outside Temperature
- CB Radio with Antenna
- Satellite Radio (Requires Subscription)
- Cellular Phone Antenna
- 12 V Battery Power Disconnect
- Fire Extinguisher

LIVING AREA / DINETTE

STANDARD EQUIPMENT ON ALL MODELS:

- Freestanding Dinette with Built-in Storage Cabinets
- Full Porcelain Tile Flooring
- Cloth Magic Sofa Bed on Driver's Side
- Ultra Leather Magic Sofa Bed on Passenger's Side
- Decorative Ceiling Panel
- Home Theater System with DVD Player
- Decorative Wall & Dinette Lighting Package
- Carbon Monoxide Detector

AVAILABLE OPTIONS:

- Ultra Leather Air-Coil® Hide-a-bed on Passenger's Side
- Cloth Air-Coil® Hide-a-bed on Passenger's Side
- Cloth Magic Sofa Bed on Passenger's Side
- Two Leather Lift Recliners on Driver's Side
- Ultra Leather Magic Sofa Bed on Driver's Side
- Leather Lift Recliner with Computer/End Table on Driver's Side
- Ultra Leather U-shaped Dinette / Sleeper Sofa Combination
- Freestanding Dinette with Computer Workstation
- 42" Mid-living Room Entertainment Center

KITCHEN

STANDARD EQUIPMENT ON ALL MODELS:

- Solid Surface Countertops and Splash Guards
- Recessed Princess 2-burner Cooktop with Solid Surface Covers
- Integrated Solid Surface Galley Sink with Solid Surface Covers
- Expand-an-island
- Ceramic Tile Backsplash with Decorative Inlays
- Stainless Steel Refrigerator with Icemaker in Door
- Stainless Steel Convection Microwave with Exterior Venting
- Power Solar / Privacy Shades & Hardwood Valance
- Built-in Soap Dispenser

AVAILABLE OPTIONS:

- Drawer Type Dishwasher

BATH

STANDARD EQUIPMENT ON ALL MODELS:

- Two Lavatories with Medicine Cabinets & Drawers
- Elongated Ceramic Toilet with Electric Flush
- Built-in Soap Dispenser at Lavatory
- Integrated Solid Surface Lavatory Sink
- Vessel Lavatory Sink
- Cosmetic Lights over Lavatories
- Solid Surface Shower Walls with Inlaid Tile
- Towel Holders, Robe Hook, & Lavatory Accessories Package
- Raised Panel Bath Doors
- Scrolled Glass Pocket Doors
- Curved Shower Enclosure Door
- Stacked Washer / Dryer
- Skylight in Shower with Sliding Cover
- Adjustable Shower Head on Slide Bar

BEDROOM

STANDARD EQUIPMENT ON ALL MODELS:

- 32" LCD TV
- Select Comfort™ King Mattress (72" X 80") with Nightstands
- Shirt Closet with Drawers
- Under Bed Storage
- Wall-to-wall Carpet
- Ceiling Fan
- LPG Leak Detector
- Solar / Privacy Shades
- Large Wardrobe Closet with Built-in Drawers, Sliding Hardwood / Mirror Doors & Automatic Light
- Pre-wired for DVD & Satellite Receiver

AVAILABLE OPTIONS:

- Tile Flooring in Bedroom
- Memory Foam King Mattress (72" X 80")

GENERAL INTERIOR

STANDARD EQUIPMENT ON ALL MODELS:

- Wall Mounted Thermostats
- 12 V Attic Fans with Hardwood Louvers
- Wall Mounted Controls
- Cable TV Hook-Up & Phone Jacks
- Solid Hardwood Raised Panel Doors
- Carpeted Cabinet Shelves
- Ball Bearing Drawer Slides
- In-motion Digital Satellite Dish
- Wallpaper Covering on Sidewalls
- Padded Soft Touch Vinyl Ceiling
- Power Solar / Privacy Shades
- Porcelain Tile Flooring
- Built-in Speakers with Matching Hardwood Louvers
- 3000 Watt Sine Wave Inverter
- Bullet Lights in Ceiling
- Ceiling Flush Mounted Multi-lighting System
- Wall Mounted Switches for Lights & Accessories
- Rope Lights Beneath Galley & Bedroom Vanity Area
- Rope Lights in Window Valances
- 50 Amp Distribution
- 12 V Fuse Panel
- Ducted Return Air Conditioning System
- Energy Management System
- Air Driven Step Well Cover
- Battery Disconnect Switch
- Smoke Alarm
- GFI Outlets at Galley & Lavatories
- Lighted Interior Grab Handle
- Entertainment System
- Complete Cable Wiring Interfacing with Surround Sound & Satellite Receiver
- Hydronic Heating System with Continuous Hot Water

AVAILABLE OPTIONS:

- All Electric Coach

THERE'S MORE THAN ONE PERFECT.

INTERIOR OPTIONS



Natural Cherry



Cherry Wood



Cherry Bark



Glazed Honey



Glazed Cherry



White Chocolate in Bath
Available Only in Combination with
Glazed Cherry or Glazed Honey

BELAIR



Bedroom/
Bedroom Accent



Sofa



Living Area Accent



Dinette



Carpet

GRAPHITE



Bedroom/
Bedroom Accent



Sofa



Living Area Accent

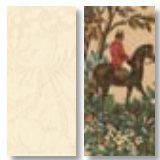


Dinette



Carpet

FABRICS BY
RALPH LAUREN



Bedroom/
Bedroom Accent



Sofa



Living Area Accent



Dinette



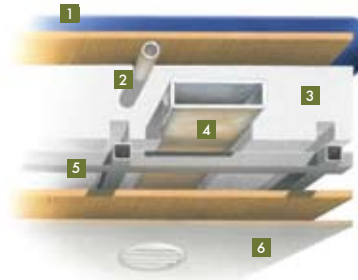
Carpet

Cabinet doors are made of solid wood, and all cabinet finishes are available in combination with any fabric scheme.

All options may not be available in every model. Specifications and standard or optional equipment are subject to change without notice or obligation. For a complete list of specifications and options, please visit tiffinmotorhomes.com

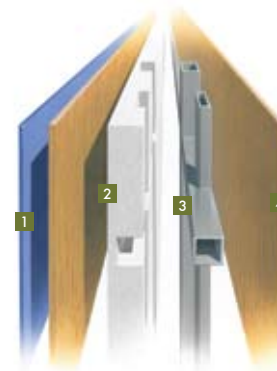
Engineering makes a Tiffin reliable, but design is what makes it unique. From cabinets crafted in our own cabinet shop to the designer-chosen finishes, here's everything you need to make your Zephyr your own. For a complete list of specifications and options, please visit tiffinmotorhomes.com

CONSTRUCTION SPECIFICATIONS



ROOF

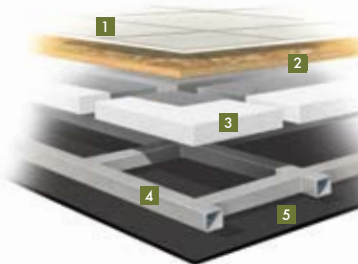
1. One-piece, moisture resistant molded fiberglass roof cap provides insulation and strength and prevents water intrusion
2. A/C Condensation Drainage System that runs internally through the roof insulation and down the sidewalls, redirecting water underneath the motor home
3. 5 1/2" formed insulation
4. Quiet Air Cooling System with return air and foil-wrapped cooling exhaust ducts
5. Durable, tubular aluminum roof skeleton
6. Easy-to-clean soft touch vinyl ceiling panel



SIDEWALL

1. Gel-coat fiberglass outside wall panel
2. High-performance thermal insulation
3. Durable, yet lightweight, tubular aluminum wall skeleton
4. Decorative inside wall panel

All sidewalls are approximately 2" thick.



FLOOR

1. Porcelain tile floor bonded to high-impact oriented strand board
2. High-level engineered oriented strand board
3. High-performance thermal insulation
4. Durable, tubular steel floor skeleton
5. Woven moisture barrier material